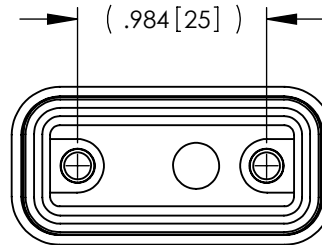
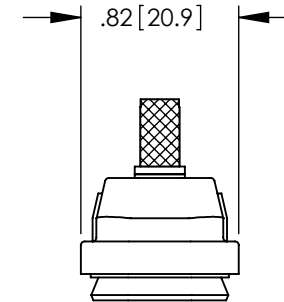
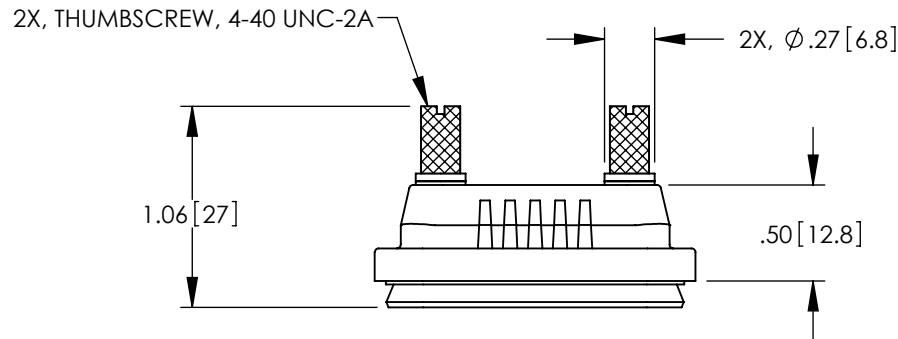
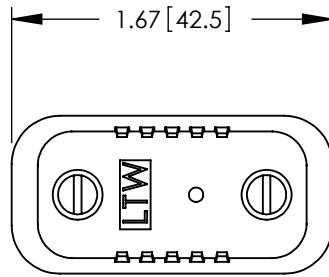


THE INFORMATION CONTAINED IN THIS DRAWING IS THE SOLE PROPERTY OF L-COM, INC. ANY REPRODUCTION IN PART OR WHOLE WITHOUT THE WRITTEN PERMISSION OF L-COM, INC. IS PROHIBITED.

REVISIONS			
REV	DESCRIPTION	DATE	APPROVED
A	INITIAL RELEASE	5/28/08	D.GRIFFIN
B	ECN 4278: ADDED OPERATING TEMPERATURE RANGE AND PACKAGING	10/1/09	D.FRISIELLO
C	ECN 4504: CHANGED THUMBSCREW FROM STEEL TO BRASS	1/19/10	D.FRISIELLO



NOTES:


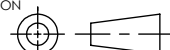
MATERIAL:
 HOUSING: ABS, BLACK
 GASKET: EPDM, BLACK
 THUMBSCREW: BRASS, WITH NICKEL PLATING AND DIAMOND KNURLING.

WATERPROOF RATING: IP67.

OPERATING TEMPERATURE RANGE: -40°C TO +105°C.

COMPONENT ASSEMBLY SHALL BE INDIVIDUALLY PACKAGED IN ACCORDANCE WITH L-COM SPECIFICATION PS-0031.

RoHS Compliant ✓

UNLESS OTHERWISE SPECIFIED, DIMENSIONS ARE IN INCHES [mm] DIMENSIONAL TOLERANCES: .X = ±.1 .XX = ±.02 .XXX = ±.005 ANGULAR TOLERANCES: ALL = ± 1°	APPROVALS	DATE		45 BEECHWOOD DRIVE NORTH ANDOVER, MA 01845	
	DRAWN BY D.FRISIELLO	5/22/08			
	CHECKED BY D.FORTIN	5/22/08	CATEGORY D-SUB		
	APPROVED BY S.SMITH	5/22/08	PRODUCT DESCRIPTION COVER, WATERPROOF, DB9 / HD15		
PROJECTION 	COLOR VARIATIONS MAY OCCUR	SIZE A	FSCM NO. 43321	DWG. NO. WPSD1-CVR	REV. C
		SCALE: NONE	CAD FILE: WPSD1-CVR.SLDDRW		SHEET 1 OF 1