

- 1
- 2
- 3
- 4
- 5
- 6
- 7
- 8
- 9
- 10
- 11
- 12
- 13
- 14
- 15
- 16
- 17
- 18

MATERIAL

AISI 301 stainless steel.

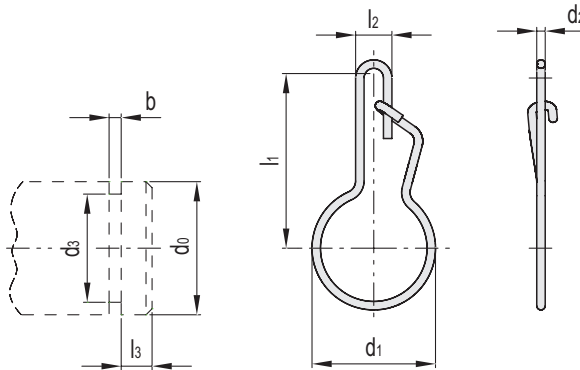
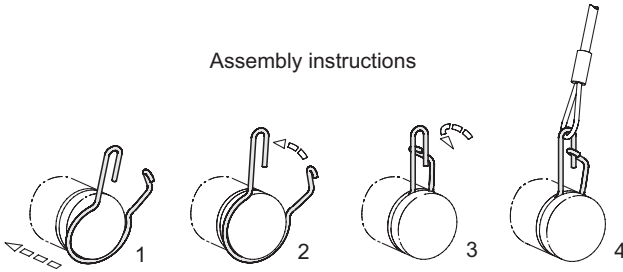
FEATURES AND APPLICATIONS

GN 111.6 retaining rings can be mounted by rotating on the groove specially made at the end of a shaft or handle.

The different types of handwheels, for example, can be fixed in the place of use with an additional retaining cable (e.g. GN 111 - GN 111.2) avoiding the possibility of loss.



Assembly instructions



Code	Description	d0	d1 +0.5	d2	d3 ±0.1	l1	l2 ±0.5	l3 +0.3	b +0.2	⚖️
GN.40971	GN 111.6-12-S	12	11.4	1.1	9.1	18.7	5	2.5	1.7	1
GN.40972	GN 111.6-14-S	14	13.2	1.1	10.9	19.8	5	3.2	1.8	1
GN.40973	GN 111.6-15-S	15	14.6	1.3	11.9	22.7	5.5	3.2	1.8	1
GN.40974	GN 111.6-16-S	16	15.6	1.3	12.9	23.3	5.5	3.2	1.8	1
GN.40975	GN 111.6-17-S	17	16.4	1.3	13.7	23.8	5.5	3.9	1.9	1
GN.40976	GN 111.6-18-S	18	17.6	1.4	14.7	26.5	6	3.9	1.9	1
GN.40977	GN 111.6-19-S	19	18.6	1.4	15.7	27.1	6	3.9	1.9	1
GN.40978	GN 111.6-20-S	20	19.6	1.4	16.7	27.7	6	3.9	1.9	1
GN.40979	GN 111.6-21-S	21	20.4	1.4	17.5	28.1	6	5.1	2	1
GN.40980	GN 111.6-22-S	22	21.8	1.6	18.5	31.1	7	5.1	2	1
GN.40981	GN 111.6-23-S	23	22.8	1.6	19.5	31.7	7	5.1	2	1
GN.40982	GN 111.6-24-S	24	23.8	1.6	20.5	32.2	7	5.1	2	1
GN.40983	GN 111.6-26-S	26	25.6	1.6	22.3	33.2	7	5.4	2.1	1