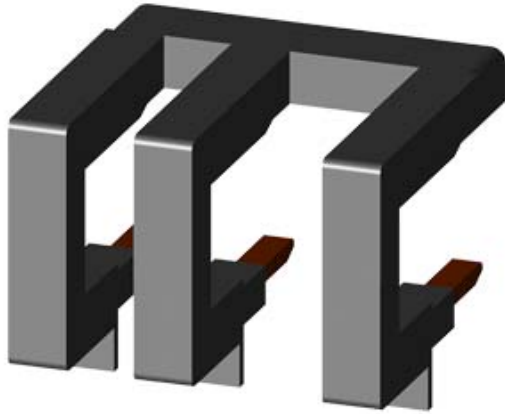


PARALLEL CONNECTION WITHOUT TERMINAL, 3-POLE FOR 3RT201., SPRING-LOADED TERMINAL



General technical data:

product brand name	SIRIUS
Product designation	Connection jumper
Design of the product	Parallel switching connection for contactors S00, spring-loaded
Size of contactor	S00

Installation/ mounting/ dimensions:

Mounting type	clip-on
---------------	---------

Certificates/ approvals:

General Product Approval	Declaration of Conformity	Test Certificates	Shipping Approval
--------------------------	---------------------------	-------------------	-------------------



[Special Test Certificate](#)



Shipping Approval	other
-------------------	-------



[Confirmation](#)

[Environmental Confirmations](#)

Further information

Information- and Downloadcenter (Catalogs, Brochures,...)

<http://www.siemens.com/industrial-controls/catalogs>

Industry Mall (Online ordering system)

<http://www.siemens.com/industrymall>

Cax online generator

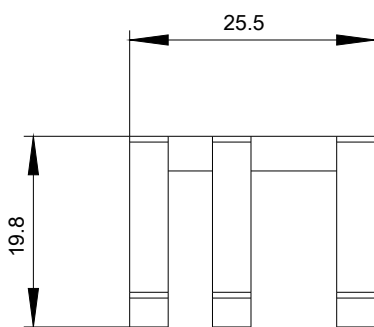
<http://support.automation.siemens.com/WW/CAXorder/default.aspx?lang=en&mfb=3RT29164BA32>

Service&Support (Manuals, Certificates, Characteristics, FAQs,...)

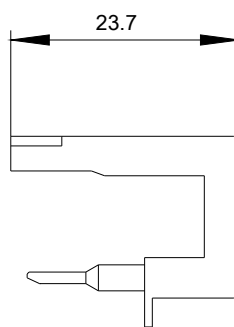
<http://support.automation.siemens.com/WW/view/en/3RT29164BA32/all>

Image database (product images, 2D dimension drawings, 3D models, device circuit diagrams, EPLAN macros, ...)

<http://www.automation.siemens.com/bilddb/index.aspx?attID9=3RT29164BA32&lang=en>



last modified:



09.03.2015