



BROAD EXTENSION CONNECTOR FOR
CONNECTING 3-PHASE BUSBARS 3RV2917 WIRING
DUCT FROM 10MM




General technical data:

product brand name		SIRIUS
Product designation		wide extension connector
Design of the product		between expansion modules

Installation/ mounting/ dimensions:

Mounting type		clip-on
---------------	--	---------

Certificates/ approvals:

General Product Approval		Test Certificates			Shipping Approval
 CSA	 UL	Type Test Certificates/Test Report	Special Test Certificate	Declaration of the Compliance with the order	 ABS

Shipping Approval				other	
 BUREAU VERITAS	 GL	 PRS	 RINA	Environmental Confirmations	Confirmation

other
other

Further information

Information- and Downloadcenter (Catalogs, Brochures,...)

<http://www.siemens.com/industrial-controls/catalogs>

Industry Mall (Online ordering system)

<http://www.siemens.com/industrymall>

Cax online generator

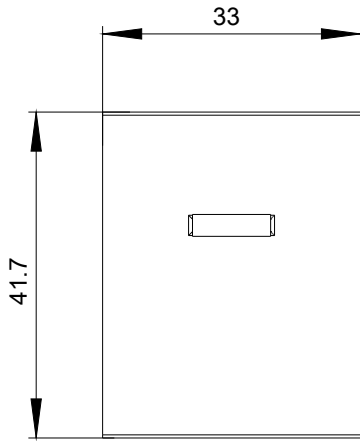
<http://support.automation.siemens.com/WW/CAXorder/default.aspx?lang=en&mlfb=3RV29175E>

Service&Support (Manuals, Certificates, Characteristics, FAQs,...)

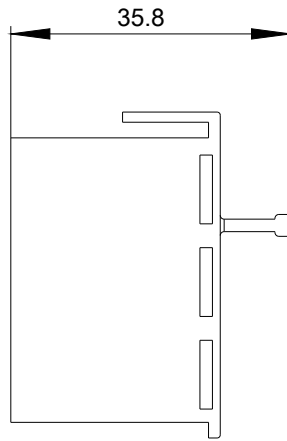
<http://support.automation.siemens.com/WW/view/en/3RV29175E/all>

Image database (product images, 2D dimension drawings, 3D models, device circuit diagrams, EPLAN macros, ...)

<http://www.automation.siemens.com/bilddb/index.aspx?attID9=3RV29175E&lang=en>



last modified:



09.03.2015