

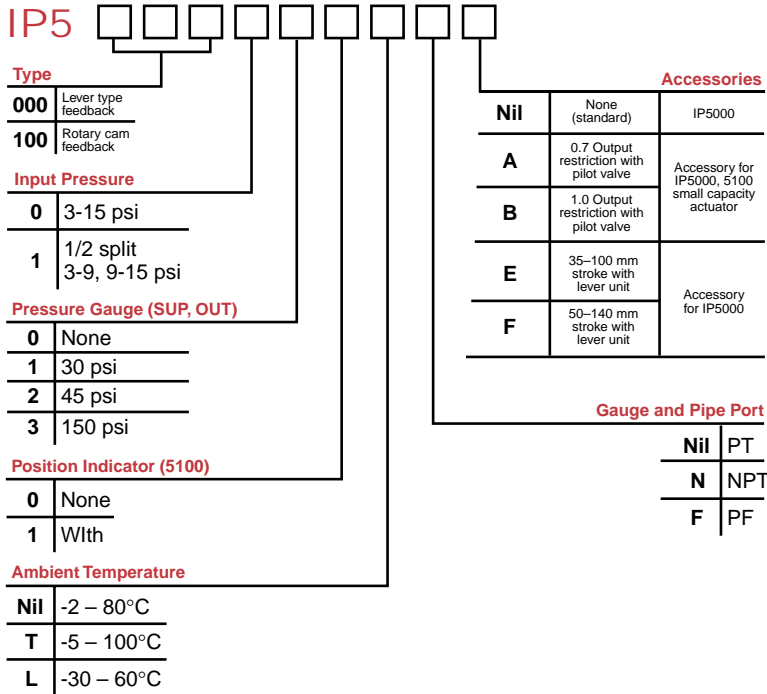
PRODUCT SPECIFICATIONS

SERIES IP5000/IP5100



SERIES	IP5000 (Linear)	IP5100 (Rotary)
SUPPLY PRESSURE	20 – 100 psi	
STROKE	0.4" – 3.4"	60 – 100 degrees
SENSITIVITY	WITHIN 0.1% F.S.	WITHIN 0.5% F.S.
LINEARITY	WITHIN 1% F.S.	WITHIN 2% F.S.
HYSTERESIS	WITHIN 0.75% F.S.	WITHIN 1% F.S.
REPEATABILITY	WITHIN ± 0.5% F.S.	
OUTPUT FLOW	2.8 SCFM at 20 psi / 7 SCFM at 60 psi	
AIR CONSUMPTION	0.2 SCFM at 20 psi	
AMBIENT AND FLUID TEMPERATURE	5 – 160° F	
AIR PORT	1/4" NPT	
MATERIAL	ALUMINUM DIE CAST BODY	
WEIGHT	3.1 lbs.	2.65 lbs.

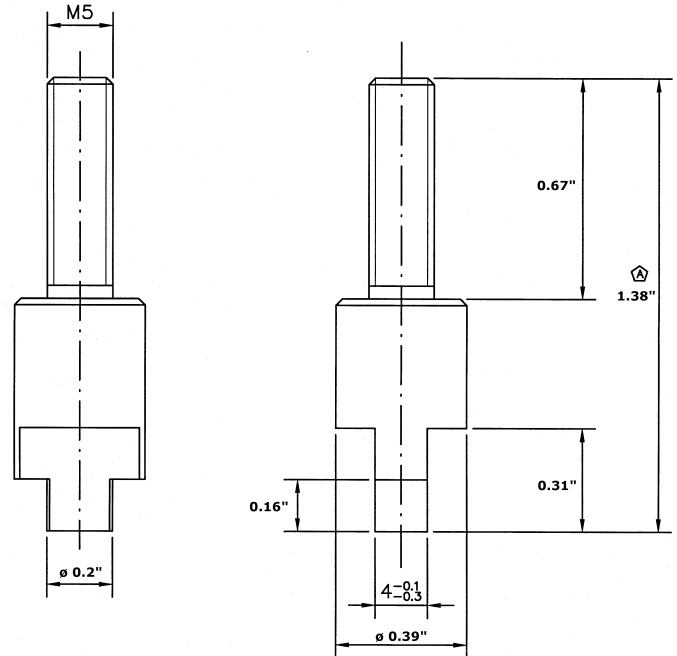
HOW TO ORDER



NAMUR FEEDBACK SHAFTS

For IP5100 Series.

Part Number: EJE-NAMUR-5100



EXTERNAL FEEDBACK LEVER

The feedback lever is selected according to valve stroke. Consult factory for strokes less than 10mm.

External Feedback Lever (IP5000 type)

Stroke	Order Code	Unit Number	Size M	Size N
10-85 mm	(Nil)	P378010-11	125	150
35-100 mm	(E)	P378010-12	110	195
50-140 mm	(F)	P378010-13	110	275

