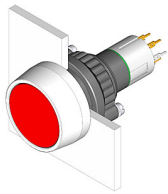


# EAO – Your Expert Partner for Human Machine Interfaces

## 14-435.036 - Illuminated pushbutton actuator

### 14-435.036 - Illuminated pushbutton actuator



*Attention: The preview is based on a sample product. This can differ from your current configuration.*

#### Mounting

Mounting cut-out  
Design Ø 22,3 mm  
raised

#### Front

Front dimension  
Front shape Ø 29 mm  
round

#### Other Attributes

Weight 0,015 kg

#### Operating-/Indication part

Lens illumination illuminative

#### IP-Rating

Front protection IP67

#### Connection Method

Terminal Universal 2.0 x 0.5 mm

#### Actuator

Switching action Momentary  
Housing colour black  
Housing material Plastic

#### Switching element

Switching system Low-level element  
Switching current 0.1 A  
Contacts 1 NO  
Switching voltage 42 V AC/DC  
Contact material

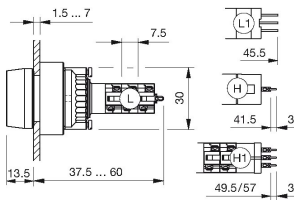
#### Function

Illuminated pushbutton

# EAO – Your Expert Partner for Human Machine Interfaces

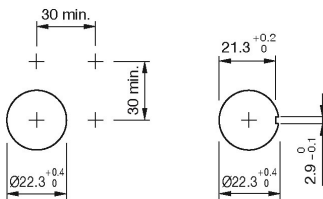
14-435.036 - Illuminated pushbutton actuator

## Dimensions

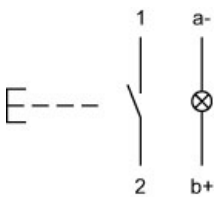


H = Universal terminal 2.0 x 0.5 mm

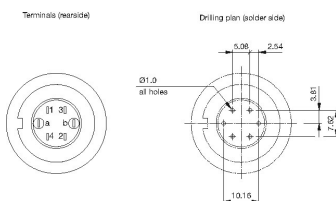
## Mounting cut-outs



## Wiring diagram



## Component layout



## Legend

Contacts: NO = Normally open  
Switching action: B = Momentary