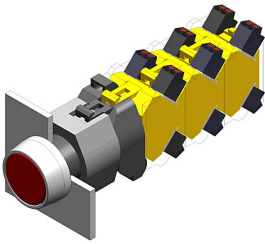


EAO – Your Expert Partner for Human Machine Interfaces

704.032.7 - Illuminated pushbutton actuator

704.032.7 - Illuminated pushbutton actuator



Attention: The preview is based on a sample product. This can differ from your current configuration.

Mounting

| | |
|------------------|-----------|
| Mounting cut-out | Ø 22,3 mm |
| Design | raised |

Front

| | |
|----------------------|------------------|
| Front shape | round |
| Front dimension | Ø 29 mm |
| Front bezel colour | natural anodized |
| Front bezel material | Aluminium |

Other Attributes

| | |
|--------|----------|
| Weight | 0,056 kg |
|--------|----------|

Operating-/Indication part

| | |
|-------------------|--------------|
| Lens optics | transparent |
| Lens material | Plastic |
| Lens colour | colourless |
| Lens profile | flat |
| Lens illumination | illuminative |

IP-Rating

| | |
|------------------|------|
| Front protection | IP65 |
|------------------|------|

Connection Method

| | |
|----------|----------------|
| Terminal | Screw terminal |
|----------|----------------|

Actuator

| | |
|------------------|-----------|
| Switching action | Momentary |
| Housing material | Plastic |
| Housing colour | grey |

Switching element

| | |
|-----------------------------------|---|
| max. number of switching elements | 3 |
|-----------------------------------|---|

Illumination

| | |
|------------|------------|
| LED colour | colourless |
|------------|------------|

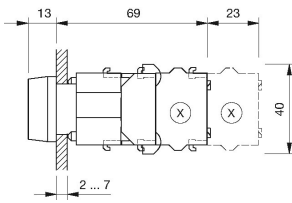
Function

| | |
|------------------------|--|
| Illuminated pushbutton | |
|------------------------|--|

EAO – Your Expert Partner for Human Machine Interfaces

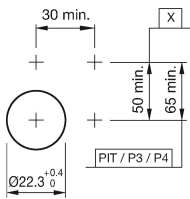
704.032.7 - Illuminated pushbutton actuator

Dimensions



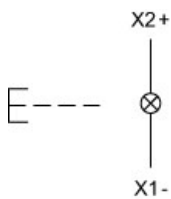
X = Screw terminal

Mounting cut-outs



PIT = Push-in terminal

Wiring diagram



Additional information

Frontring with protective cover to be mounted with a torque of 40 Ncm onto actuator
Max. 3 switching elements can be clipped on
The colour of anodized aluminium parts can vary due to technical production reasons

Legend

Switching action: B = Momentary