

REV. COMB., AC3, 15KW/400V AC110V 50HZ/120V  
60HZ 3-POLE, SZ S0 SPRING-LOADED TERMINAL  
ELECTR. AND MECH. INTERLOCK 2NO INTEGR.

product brand name	SIRIUS
Product designation	star-delta (wye-delta) contactor assembly 3RA24
<b>Manufacturer article number</b>	
<ul style="list-style-type: none"> <li>• 1 of the supplied contactor</li> <li>• 2 of the supplied contactor</li> <li>• of the supplied RH assembly kit</li> </ul>	<a href="#">3RT2027-2AK60</a> <a href="#">3RT2027-2AK60</a> <a href="#">3RA2923-2AA2</a>

### General technical data:

<b>Insulation voltage</b>		
<ul style="list-style-type: none"> <li>• with degree of pollution 3 Rated value</li> </ul>	V	690
<b>Degree of pollution</b>		3
<b>Shock resistance</b>		12.5g / 5 ms and 7.8g / 10 ms
<b>Surge voltage resistance Rated value</b>	kV	6
<b>Mechanical service life (switching cycles)</b>		
<ul style="list-style-type: none"> <li>• of the contactor typical</li> <li>• of the contactor with added auxiliary switch block typical</li> </ul>		10 000 000 10 000 000
<b>Protection class IP</b>		
<ul style="list-style-type: none"> <li>• on the front</li> </ul>		IP20
<b>Equipment marking</b>		
<ul style="list-style-type: none"> <li>• acc. to DIN EN 81346-2</li> </ul>		Q

### Main circuit:

<b>Number of poles for main current circuit</b>		3
<b>Number of NC contacts for main contacts</b>		0
<b>Number of NO contacts for main contacts</b>		3
<b>Operating voltage</b>		

<ul style="list-style-type: none"> <li>• at AC-3 Rated value maximum</li> </ul>	V	690
<b>Operating current</b>		
<ul style="list-style-type: none"> <li>• at AC-1 <ul style="list-style-type: none"> <li>— at 400 V at ambient temperature 40 °C Rated value</li> <li>— at 400 V at ambient temperature 60 °C Rated value</li> </ul> </li> <li>• at AC-2 at 400 V Rated value</li> <li>• at AC-3 <ul style="list-style-type: none"> <li>— at 400 V Rated value</li> </ul> </li> <li>• at AC-4 at 400 V Rated value</li> </ul>	A	50
	A	45
	A	32
	A	32
	A	22
<b>Operating current with 1 current path</b>		
<ul style="list-style-type: none"> <li>• at DC-1 <ul style="list-style-type: none"> <li>— at 24 V Rated value</li> <li>— at 110 V Rated value</li> </ul> </li> <li>• at DC-3 at DC-5 <ul style="list-style-type: none"> <li>— at 24 V Rated value</li> <li>— at 110 V Rated value</li> </ul> </li> </ul>	A	35
	A	4.5
	A	20
	A	2.5
<b>Operating current with 2 current paths in series</b>		
<ul style="list-style-type: none"> <li>• at DC-1 <ul style="list-style-type: none"> <li>— at 24 V Rated value</li> <li>— at 110 V Rated value</li> </ul> </li> <li>• at DC-3 at DC-5 <ul style="list-style-type: none"> <li>— at 110 V Rated value</li> <li>— at 24 V Rated value</li> </ul> </li> </ul>	A	35
	A	35
	A	15
	A	35
<b>Operating current with 3 current paths in series</b>		
<ul style="list-style-type: none"> <li>• at DC-1 <ul style="list-style-type: none"> <li>— at 24 V Rated value</li> <li>— at 110 V Rated value</li> </ul> </li> <li>• at DC-3 at DC-5 <ul style="list-style-type: none"> <li>— at 110 V Rated value</li> <li>— at 24 V Rated value</li> </ul> </li> </ul>	A	35
	A	35
	A	35
	A	35
<b>Operating power</b>		
<ul style="list-style-type: none"> <li>• at AC-2 at 400 V Rated value</li> <li>• at AC-4 at 400 V Rated value</li> </ul>	kW	15
	kW	11
<b>Operating power</b>		
<ul style="list-style-type: none"> <li>• at AC-3 <ul style="list-style-type: none"> <li>— at 400 V Rated value</li> <li>— at 500 V Rated value</li> <li>— at 690 V Rated value</li> </ul> </li> </ul>	kW	15
	kW	18.5
	kW	15
<b>Operating frequency</b>		
<ul style="list-style-type: none"> <li>• at AC-3 maximum</li> </ul>	1/h	1 000

No-load switching frequency	1/h	1 500
-----------------------------	-----	-------

### Control circuit/ Control:

Type of voltage of the control supply voltage		AC
Control supply voltage 1 with AC		
• at 50 Hz Rated value	V	110
• at 60 Hz Rated value	V	120
Operating range factor control supply voltage rated value of the magnet coil with AC		
• at 50 Hz		0.8 ... 1.1
• at 60 Hz		0.8 ... 1.1

### Auxiliary circuit:

Number of NC contacts		
• for auxiliary contacts		
— per direction of rotation		0
— instantaneous contact		0
— lagging switching		0
Number of NO contacts		
• for auxiliary contacts		
— per direction of rotation		0
— instantaneous contact		0
— leading contact		0
Product expansion Auxiliary switch		Yes
Operating current of the auxiliary contacts at AC-12 maximum	A	10
Operating current of the auxiliary contacts at AC-15		
• at 230 V	A	6
• at 400 V	A	3
Operating current of the auxiliary contacts at DC-13		
• at 24 V	A	10
• at 60 V	A	2
• at 110 V	A	1
• at 220 V	A	0.3
Contact reliability of the auxiliary contacts		< 1 error per 100 million operating cycles

### UL/CSA ratings:

Full-load current (FLA) for three-phase AC motor		
• at 480 V Rated value	A	27
• at 600 V Rated value	A	27
yielded mechanical performance [hp]		
• for single-phase AC motor at 110/120 V Rated value	metric hp	2

• for single-phase AC motor at 230 V Rated value	metric hp	5
• for three-phase AC motor at 220/230 V Rated value	metric hp	10
• for three-phase AC motor at 460/480 V Rated value	metric hp	20
• for three-phase AC motor at 575/600 V Rated value	metric hp	25
<b>Contact rating of the auxiliary contacts acc. to UL</b>		A600 / Q600

#### Short-circuit:

<b>Design of the fuse link</b>		
<ul style="list-style-type: none"> <li>• for short-circuit protection of the main circuit <ul style="list-style-type: none"> <li>— with type of assignment 1 required</li> <li>— with type of assignment 2 required</li> </ul> </li> <li>• for short-circuit protection of the auxiliary switch required</li> </ul>		gL/gG NH 3NA, DIAZED 5SB, NEOZED 5SE: 125 A gL/gG NH 3NA, DIAZED 5SB, NEOZED 5SE: 50 A fuse gL/gG: 10 A

#### Installation/ mounting/ dimensions:

<b>mounting position</b>		+/-180° rotation possible on vertical mounting surface; can be tilted forward and backward by +/- 22.5° on vertical mounting surface
<b>Mounting type</b>		screw and snap-on mounting onto 35 mm standard mounting rail
<b>Height</b>	mm	114
<b>Width</b>	mm	90
<b>Depth</b>	mm	97
<b>Required spacing</b>		
<ul style="list-style-type: none"> <li>• with side-by-side mounting <ul style="list-style-type: none"> <li>— forwards</li> <li>— Backwards</li> <li>— upwards</li> <li>— downwards</li> <li>— at the side</li> </ul> </li> <li>• for grounded parts <ul style="list-style-type: none"> <li>— forwards</li> <li>— Backwards</li> <li>— upwards</li> <li>— at the side</li> <li>— downwards</li> </ul> </li> <li>• for live parts <ul style="list-style-type: none"> <li>— forwards</li> <li>— Backwards</li> <li>— upwards</li> </ul> </li> </ul>	mm	6 0 6 6 6  6 0 6 6 6  6 0 6

— downwards

mm 6

— at the side

mm 6

#### Connections/ Terminals:

<b>Type of electrical connection</b> <ul style="list-style-type: none"><li>• for main current circuit</li><li>• for auxiliary and control current circuit</li></ul>		spring-loaded terminals spring-loaded terminals
<b>Type of connectable conductor cross-section</b> <ul style="list-style-type: none"><li>• for main contacts<ul style="list-style-type: none"><li>— single or multi-stranded</li><li>— finely stranded with core end processing</li><li>— finely stranded without core end processing</li></ul></li><li>• for AWG conductors for main contacts</li><li>• for auxiliary contacts<ul style="list-style-type: none"><li>— single or multi-stranded</li><li>— finely stranded with core end processing</li><li>— finely stranded without core end processing</li></ul></li><li>• for AWG conductors for auxiliary contacts</li></ul>		2x (1 ... 10 mm <sup>2</sup> ) 2x (1 ... 6 mm <sup>2</sup> ) 2x (1 ... 6 mm <sup>2</sup> )  1x (18 ... 8)  2x (0,5 ... 2,5 mm <sup>2</sup> ) 2x (0.5 ... 1.5 mm <sup>2</sup> ) 2x (0.5 ... 1.5 mm <sup>2</sup> )  2x (20 ... 14)
<b>Apparent pick-up power of the magnet coil with AC</b> <ul style="list-style-type: none"><li>• at 50 Hz</li></ul>	V·A	77

#### Safety related data:

<b>B10 value with high demand rate acc. to SN 31920</b>		1 000 000
<b>Proportion of dangerous failures</b> <ul style="list-style-type: none"><li>• with low demand rate acc. to SN 31920</li><li>• with high demand rate acc. to SN 31920</li></ul>	% %	40 75
<b>Failure rate [FIT] with low demand rate acc. to SN 31920</b>	FIT	100
<b>T1 value for proof test interval or service life acc. to IEC 61508</b>	y	20
<b>Protection against electrical shock</b>		finger-safe

#### Mechanical data:

<b>Size of contactor</b>		S0
--------------------------	--	----

#### Communication/ Protocol:

<b>Product function Bus communication</b>		No
<b>Protocol is supported</b> <ul style="list-style-type: none"><li>• AS-interface protocol</li></ul>		No
<b>Product function Control circuit interface with IO link</b>		No

#### Ambient conditions:

<b>Installation altitude at height above sea level maximum</b>	m	2 000
--	---	-------

### Ambient temperature

- during operation
- during storage


°C	-25 ... +60
°C	-55 ... +80

### Certificates/ approvals:

General Product Approval	Declaration of Conformity	Test Certificates	Shipping Approval		
 CSA	 UL		 EG-Konf.	<a href="#">Special Test Certificate</a>	 ABS

### Shipping Approval



Shipping Approval	other
 RMRS	<a href="#">Environmental Confirmations</a> <a href="#">other</a>

### Further information

#### Information- and Downloadcenter (Catalogs, Brochures,...)

<http://www.siemens.com/industrial-controls/catalogs>

#### Industry Mall (Online ordering system)

<http://www.siemens.com/industrymall>

#### Cax online generator

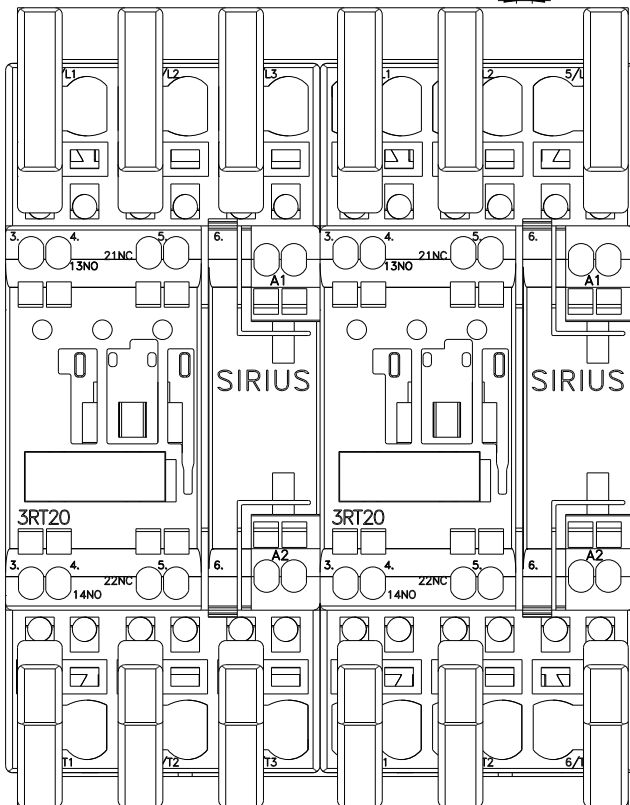
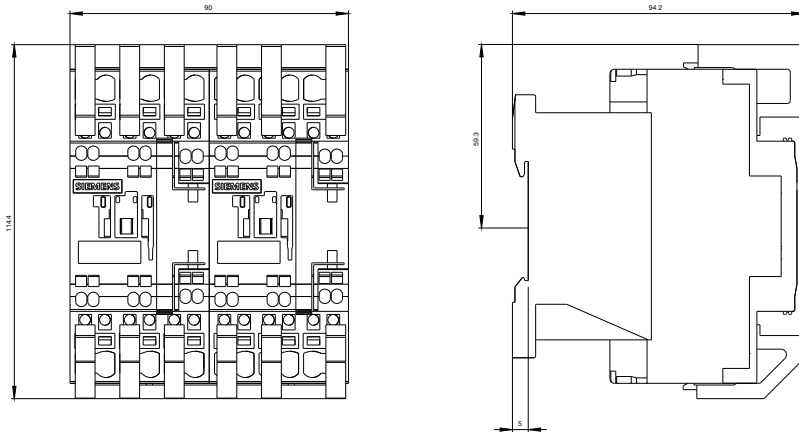
<http://support.automation.siemens.com/WW/CAXorder/default.aspx?lang=en&mf=3RA23278XB302AK6>

#### Service&Support (Manuals, Certificates, Characteristics, FAQs,...)

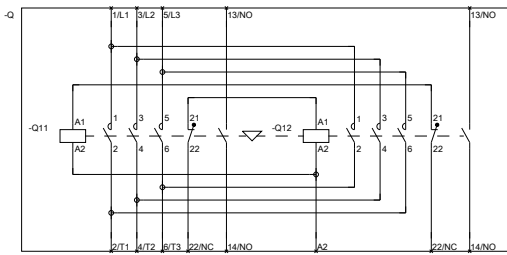
<http://support.automation.siemens.com/WW/view/en/3RA23278XB302AK6/all>

#### Image database (product images, 2D dimension drawings, 3D models, device circuit diagrams, EPLAN macros, ...)

[http://www.automation.siemens.com/bilddb/cax\\_de.aspx?mf=3RA23278XB302AK6&lang=en](http://www.automation.siemens.com/bilddb/cax_de.aspx?mf=3RA23278XB302AK6&lang=en)



WENDEKOMBINATION BGR. 50



REVERSING COMB. SZ 50

last modified:

11.03.2015