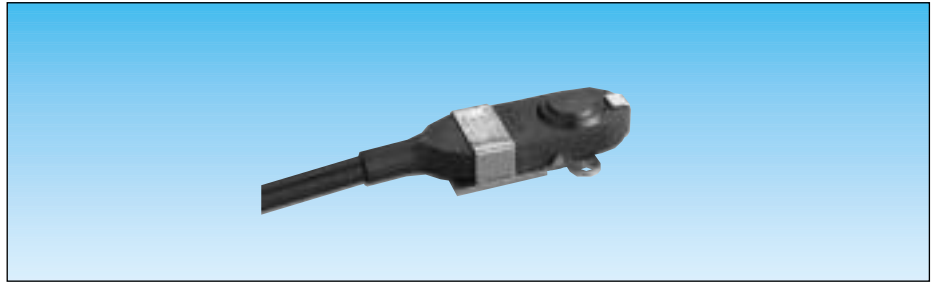
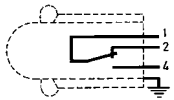


Sealed microswitch IP 66



General specifications

Layout

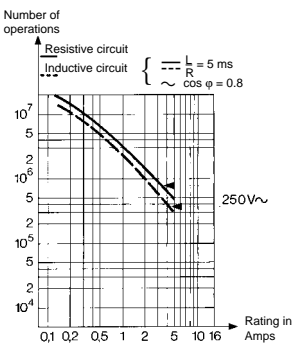


Components

Material

- Casing : nitrile
- Contacts : silver
- Contact holder : polyamide
- Mounting plate : passivated mild steel (zinc)

Operating curve



Degree of protection IP 66

Mounting - Operation

In order to comply with basic safety requirements, an insulator must be used if the device is being operated manually. One of the fixing holes must be used as a protective earth.

Types

Features	83 123 0 Standard		83 123 0 Spherical cover	
	Electrical characteristics			
Current rating at 250 V	Nominal	A	5	5
	Thermal	A	12	12
Mechanical characteristics				
Operating force - max.	N		5.3	5.3
Release force - min.	N		1.5	1.5
Total travel force - max.	N		8	8
Permitted overtravel force - max.	N		30	30
Tripping point	mm		11.4 ^{±0.4}	17.4 ^{±0.5}
Differential travel	mm		0.2	0.2
Overtravel - min.	mm		0.2	0.2
Maximum operating temperature	°C		0 +85	0 +85
Mechanical durability	Operations		2 x 10 ⁶	2 x 10 ⁶
Contact gap	mm		0.2	0.2
Weight	g		45	50

Functions

I (changeover)

Connections

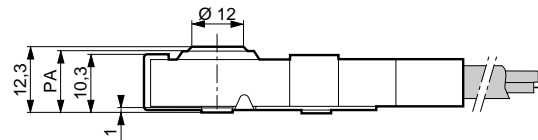
Output by A05 VVF cable , 3 x 0.75 mm² cores in sheath of 7.6 mm ext. Ø.

Standard length 0.50 m

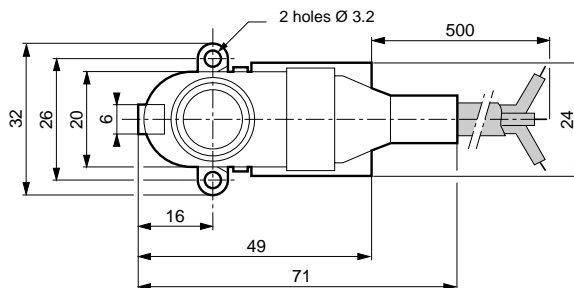
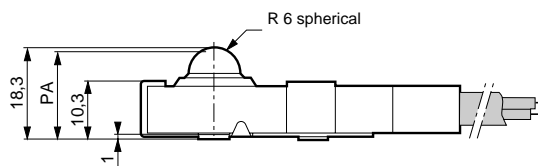
Common (1) : black
Normally closed (2) : brown
Normally open (4) : blue

Dimensions

83 123 Standard



83 123 Spherical cover



Other information

For other cable lengths and temperatures, please consult us.

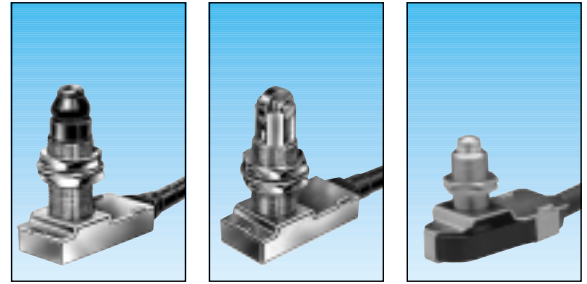
To order, specify :

Standard products,
non stocked

1 Type of microswitch 2 Function 3 Connection

Example : 83 123 0 - I - length 0.50 m

Limit switches



1

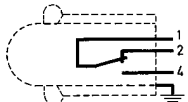
Conform to the following standards :
IEC 356.1 - EN 60204.1
NFC 20030 : Class I - 83 731 - 83 732
Class III - 83 733

Degree of protection :
IP 56 - IP 66 depending on type

Version : 1 pole

Function : 3-terminal single break two-way contact element (form C. inverter).

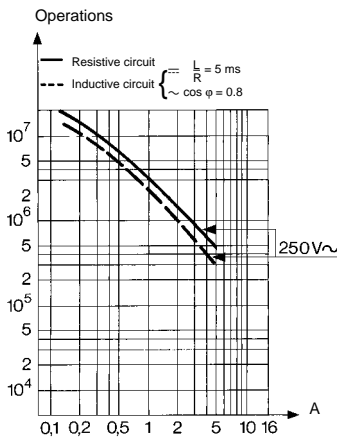
Principle :



Electrical characteristics :

Assigned operating current (Ie)
83 731 - 83 732 : 5 A 250 V
83 733 : 5 A 50 V
Thermal rating (Ith) : 12 A

Operating curve :



Connections :

PVC cable (A05 - VV - F) 0.50 m long
3 conductors cross-section 0.75 mm²
Sheathed, ext. Ø : 7.6 mm
Core connections : 1 : black (common)
2 : brown (NC)
4 : blue (NO)

Electrical protection :

Earthing terminal for version 83 731 and 83 732.

Approvals :

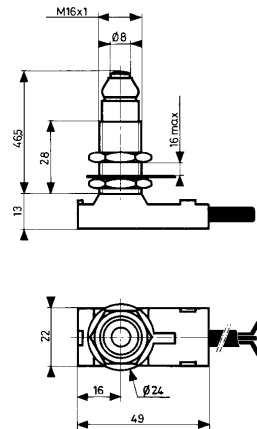
CSA A300.

Types

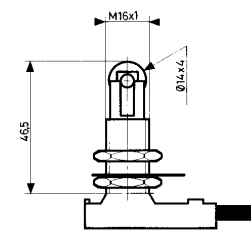
	83 731 3	83 732 3	83 733 3
Control mechanisms			
Top-mounted plunger	•		•
Top-mounted plunger with roller		•	
Mechanical characteristics			
Minimum operating force	N - (cmN)	15	15
Minimum total travel force	N	35	35
Minimum operating travel	mm - (°)	2	2
Differential travel	mm - (°)	0.2	0.2
Max. total travel	mm - (°)	6	6
Mechanical life	Operations	10 ⁶	10 ⁶
Temperature limits	° C	- 5 + 70	- 5 + 70
Degree of protection	° C	IP 66	IP 56
Weight	g	110	120

Dimensions

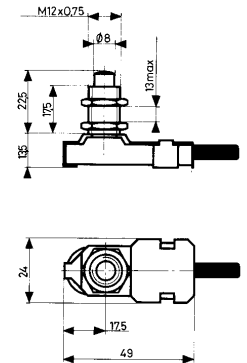
83 731 3



83 732 3



83 733 3



7

Other information

For other versions, functions and special contacts or special modes of operation : please consult us.

To order, specify :

Standard products, non stocked

1 Type

Example : Limit switch - 83 731 3