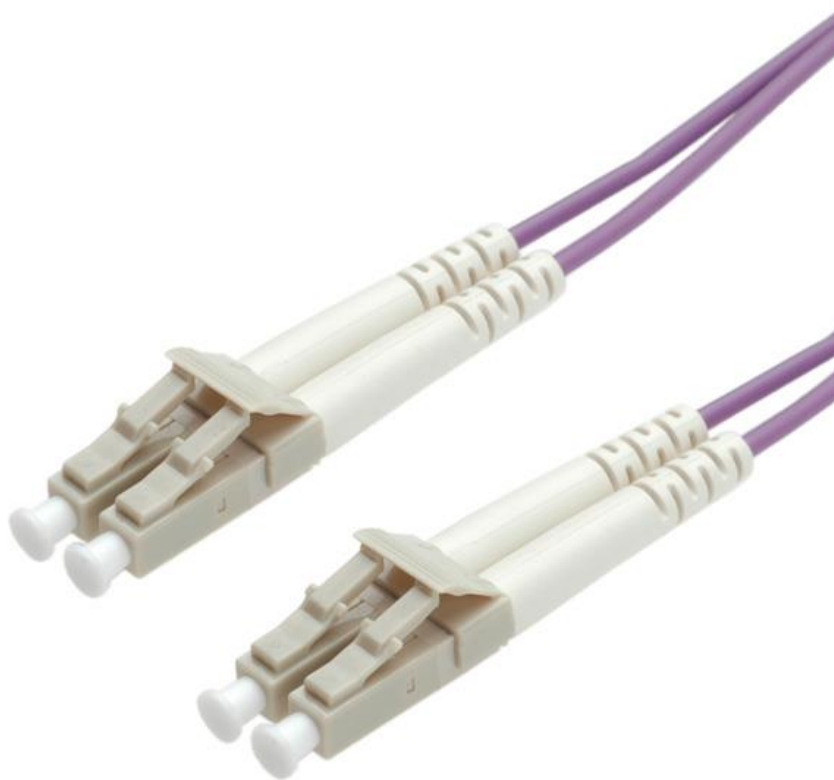




Datenblatt - Fiche technique - Data sheet

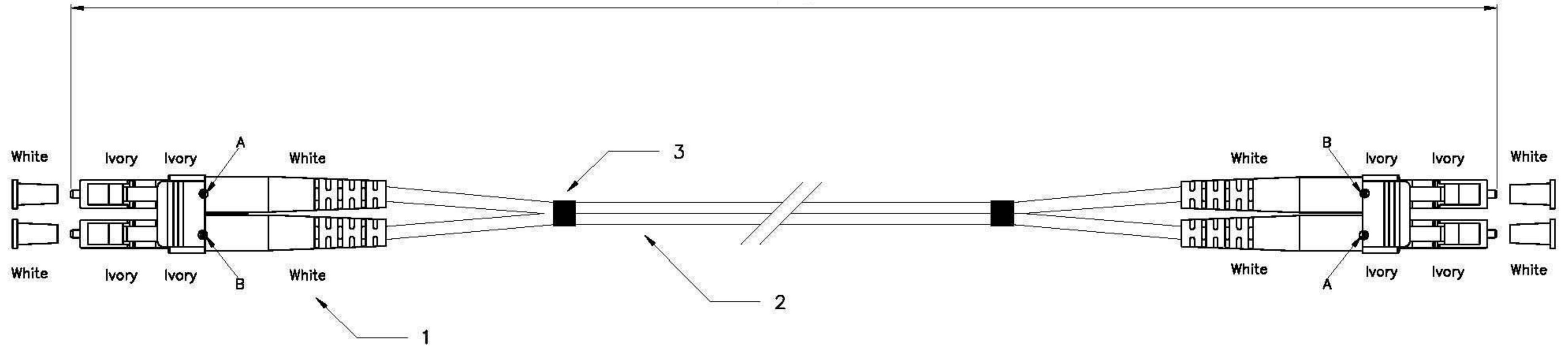
21.15.8751



ROLINE LWL-Kabel 50/125 μ m OM4, LC/LC, violett, 1m

ROLINE Câble FO 50/125 μ m, LC/LC, OM4, violet, 1m

ROLINE Fibre Optic Jumper Cable, 50/125 μ m, LC/LC, OM4, purple, 1 m



Specification:

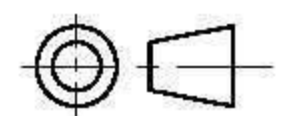
1. Connector Type : LC Multimode
2. Cable Type :
 2-1 Zipcord Cable, $\phi 2.0\text{mm}$, 50/125 μm Multimode. (OM4 Corning Fiber)
 2-2 Calbe Jacket : Purple Color, PVC Material.
3. Shrink Tube

Performance:

- a. Insertion Loss : <0.5 dB
- b. Fiber Extention : $-0.05\mu\text{m} < H < +0.05\mu\text{m}$
- c. $\phi 1.25\text{mm}$ Ferrule End-face Radius : $7 < R < 25\text{mm}$
- d. Apex Offset : < 50 μm
- e. Increase in insertion loss after 500 mating : 0.2 dB Max
- f. Operating Temperature : -20° to $+70^{\circ}$
- g. Storage Temperature : -40° to $+80^{\circ}$
- h. Bending radius: 0.5 ~1m:90mm, 2 ~3m: 80mm, 5~10m: 70mm

Item No.:	21.15.8750	0.5m
Item No.:	21.15.8751	1.0m
Item No.:	21.15.8752	2.0m
Item No.:	21.15.8753	3.0m
Item No.:	21.15.8755	5.0m
Item No.:	21.15.8758	10.0m

GENERAL TOLERANCE OF DIMENSIONS X.XXX ± 0.005 X.XX ± 0.05 X.X ± 0.1	DRAWING	12.APR.2011	ZCY	Rotronic CO., Ltd.	
	CHECK	12.APR.2011	YTY		
	APPROVAL	12.APR.2011	FRANK		
		DATE	NAME		
	SCALE	1/1 (A4)	UNIT	mm	ROLINE F. O. Cable, LC-LC, OM4
	DRAWING CLASSIFICATION		S	SHEET	1 OF 1



10cm