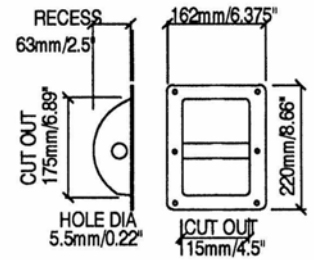


**H1105**

Recessed Steel Bar Handle.  
 Test Data Available.  
 Suits Backplate H1105/BP and Air tight gasket H1105G

Material: 0.9mm/ 20 gauge Steel

Part Number	Finish	Description
H1105	Black	
H1105TEX	Textured Black	

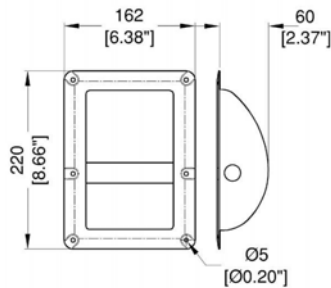


**H1105/06**

6 Hole Recessed Steel Bar Handle.  
 Test Data Available.  
 Suits Backplate H1105/BP and Air tight gasket H1105G

Material: 0.9mm/ 20 gauge Steel

Part Number	Finish	Description
H1105/06	Black	



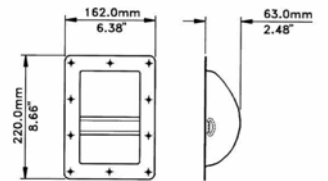
**H8805/06**

6 Hole Recessed bar handle.  
 In Evolution Style Dish, with rivet protection.  
 Test data available.  
 Suits Backplate H1105/BP and Air tight gasket H1105G

Registered Design

Material: 0.9mm/ 20 gauge Steel

Part Number	Finish	Description
H8805/06	Black	

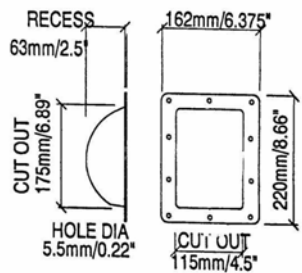


**H1104**

Recessed Bar Handle.

Material: 0.9mm/ 20 gauge Steel

Part Number	Finish	Description
H1104	Black	
H1104TEX	Textured Black	

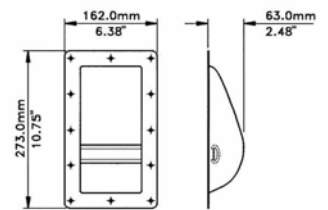


**H1107**

Recessed Air Seal Cover for cabinets with routed wooden handle.  
 Suits Backplate H1105/BP and Air tight gasket H1105G

Material: 0.9mm/ 20 gauge Steel

Part Number	Finish	Description
H1107	Black	



**H1069**

Recessed Bar Handle.  
 Suits Backplate H1070/BP

Material: 0.9mm/ 20 gauge Steel

Part Number	Finish	Description
H1069	Black	
H1069TEX	Textured Black	