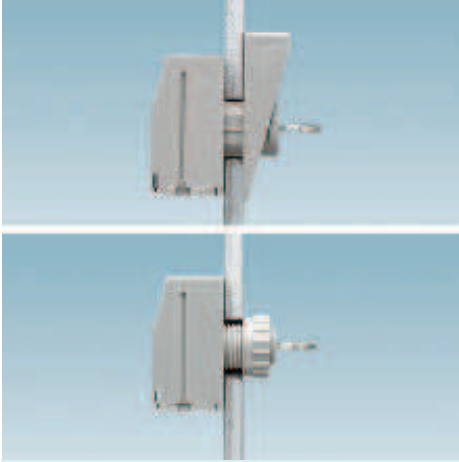


Feed-through terminal blocks for high-current applications - CLIPLINE

High-current panel feed-through terminal blocks - CLIPLINE

VDFK 4 molded feed-through terminal blocks with screw connection





- Universal screw connection with screw locking
- Terminal blocks can be grouped
- Easy fixing using plastic knurled nut or quick mounting wedge
- Touch-proof insulating housing
- Spacer plates increase air and creepage distances

Notes:

For additional technical data, drawings, and accessories, please visit www.phoenixcontact.net/catalog.

Accessories

For all types	Type	
	Screwdriver SZS 0,6 x 3,5 Order No. 1205053	
	Spacer plate, 4 mm thick DP-VDFK 4/4 Order No. 0717144	

Technical data

VDFK 4

VDFK 4/K

Technical data according to IEC/DIN VDE						
Current / conductor cross section	[A] / [mm ²]		32 / 6 // 32 / 4		32 / 6 // 32 / 4	
Rated voltage	[V]		500		500	
Connection capacity						
Solid / stranded	[mm ²] / [mm ²] / AWG		0.2 - 6 / 0.2 - 4 / 24 - 10		0.2 - 6 / 0.2 - 4 / 24 - 10	
Stranded with ferrules without plastic sleeve	[mm ²]		0.25 - 4		0.25 - 4	
Stranded with ferrules with plastic sleeve	[mm ²]		0.25 - 4		0.25 - 4	
Multi-conductor connection capacity (two conductors with the same cross section)						
Solid / stranded	[mm ²]		0.2 - 1.5 / 0.2 - 1.5		0.2 - 1.5 / 0.2 - 1.5	
Stranded with ferrules without plastic sleeve	[mm ²]		0.25 - 1.5		0.25 - 1.5	
Stranded with TWIN ferrule with plastic sleeve	[mm ²]		0.5 - 1.5		0.5 - 1.5	
Cross section with insertion bridge (solid / stranded)	[mm ²]		- / -		- / -	
Insulation coordination						
Surge voltage category / pollution degree						
Rated insulation voltage	[V]		III / 3	III / 2	II / 2	III / 3
Rated surge voltage	[kV]		500	1000	1000	500
Approval data (UL/CUL)	Use Group		6	6	6	6
Nominal voltage	[V]		B	C	D	B
Nominal current	[A]		300	150	300	300
Connection capacity AWG	AWG		30	30	10	30
Approval data (CSA)	Use Group		30 - 10	30 - 10	30 - 10	30 - 10
Nominal voltage	[V]		B	C	D	B
Nominal current	[A]		300	-	300	300
Connection capacity AWG	AWG		30	-	10	30
General data						
Stripping length	[mm]		28 - 10	-	28 - 10	28 - 10
Terminal sleeve: Thread / tightening torque	- / [Nm]		8	8		
Insulation material			M3 / 0.6 - 0.8	M3 / 0.6 - 0.8		
Inflammability class according to UL 94			PA	PA		
			V0	V0		

Description

Feed-through terminal blocks for high-current applications - CLIPLINE

High-current panel feed-through terminal blocks - CLIPLINE



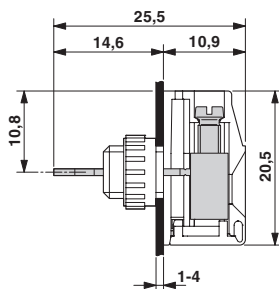
4/6 mm² molded feed-through terminal block, horizontal conductor connection, inside with solder connection and knurled nut



4/6 mm² molded feed-through terminal block, horizontal conductor connection, inside with solder connection and securing wedge

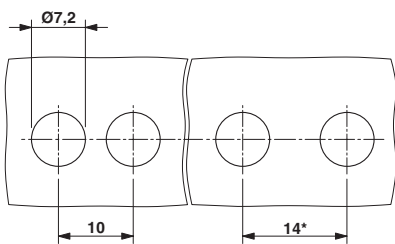


Dimensional drawing

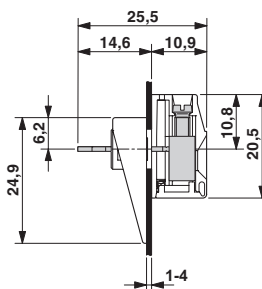


Drilling diagram

* Dimensions when using the DP-VDFK 4/4 spacer plate

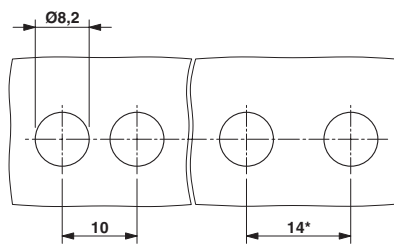


Dimensional drawing



Drilling diagram

* Dimensions when using the DP-VDFK 4/4 spacer plate



Ordering data

Type	Order No.	Pcs. / Pkt.
Molded feed-through terminal block, for 1 ... 4 mm thick housing panels		
VDFK 4	0708250	50
Molded feed-through terminal block, for 4 ... 8 mm thick housing panels		
VDFK 4-DP	0708360	50

BN-ZB 10 marking material (see online catalog)

Ordering data

Type	Order No.	Pcs. / Pkt.
Molded feed-through terminal block, for 1 ... 4 mm thick housing panels		
VDFK 4/K	0709233	50
Molded feed-through terminal block, for 4 ... 7 mm thick housing panels		
VDFK 4/K-DP	0709220	50

BN-ZB 10 marking material (see online catalog)