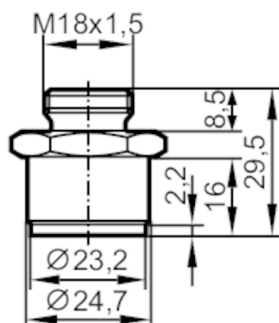


E40148



Welding adapter for process sensors

ADAPT /SI/9/ /M18X1,5/ /



Application	
Application	for industrial applications
Media	liquids and gases
Pressure rating [bar]	16
Tests / approvals	
Pressure Equipment Directive	A possible classification to PED depends on the application and has to be carried out by the user / operator.
Safety instructions	The compatibility between medium and product material has to be checked in all applications.
Mechanical data	
Weight [g]	21.2
Type of mounting	PVC adapter to be glued into the pipe
Materials	PVC
Sensor connection	M18 x 1,5 internal thread
Process connection	Ø 23 mm
Insertion depth [mm]	21; (measuring probe SID, SFD, TN)
Remarks	
Pack quantity	1 pcs.