

## Single-phase Filter for the Control Line of Equipment



- Filter for the control line of complex equipment and machinery
- Ensures the interference-free operation of the control unit / PLC
- Improves the immunity and reliability of the entire system
- Compact EMC filter design with minimum space requirement

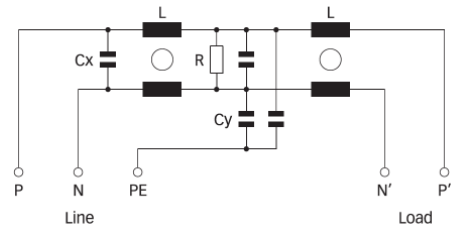
### Approvals



### Technical specifications

Datasheet Image:	FN_2415_white_01.jpg
Design corresponding to :	UL 1283, CSA 22.2 No. 8 1986, IEC/EN 60939
Flammability corresponding to:	UL 94V-2 or better
High potential test voltage :	P/N → E 2250VDC for 2 sec P → N 1100VDC for 2 sec
Maximum continuous operating voltage :	250VAC (230VAC +10% possible)
MTBF @ 50 °C/230V (Mil-HB-217F):	>1,300,000 hours
Operating frequency:	dc to 60Hz
Overload capability :	4x rated current at switch on, 1.5x rated current for 1 minute, once per hour
Performance indicators:	FN2415.jpg
Protection category :	IP20
Rated currents :	6 to 16 A @ 50 °C
Temperature range (operation and storage) :	-25 °C to +100 °C (25/100/21)

### Typical electrical schematic




### Features and benefits

- An additional filter for the supply cables of controls of rather large and complex systems, to ensure a fault free operation of the control unit (PLC, Motion Control etc.).
- Improves the immunity, reliability and service security of the entire system significantly by reducing the risk of internal interference propagation and coupling.
- Improves the immunity, reliability and service security of the entire system significantly by reducing the risk of internal interference propagation and coupling.
- Simple and time-saving installation with good accessibility for automatic and hand tools.
- Solid, touch-safe terminal blocks offering sufficient contacting cross section according to the EN 60204-1 installation standard, which is very common for machine tools and industrial equipment.
- By providing a very decent attenuation performance, FN 2415 contributes significantly to the achievement of electromagnetic compliance according to the latest standards (like EN 50370-1 for machine tools).

### Typical applications

Ideal for industrial equipment, machinery and diverse process automation systems, which involve any kind of control units (NC, CNC, PLC, Motion Controls). Rather large and complex machine tools, with 8 or even more driving axes and very long motor cables, can be subjected to major reliability problems, caused by internal coupling of interferences from the drive system to the control lines. Very often, this causes a drop out of the control unit and consequently downtimes of the entire machine. By operating an FN 2415 in addition to a mains input filter, these negative effects can be eliminated for most situations. FN 2415 can also be used for the most diverse single-phase applications with medium to high interference levels, such as single-phase motor drives or power supplies.

**Filter selection table**

Filter	Rated current	Leakage current*	Power loss	Input/Output connections	Weight
	@ 50°C (40°C)	@ 250VAC/50Hz	@ 25°C/50Hz		
	[A]	[mA]	[W]		[kg]
FN 2415-6-29	6 (6.6)	9.4	2.2	-29	0.4
FN 2415-10-29	10 (11)	9.4	2.4	-29	0.4
FN 2415-16-29	16 (17.5)	9.4	4.3	-29	0.4

\* Maximum leakage under normal operating conditions. Note: if the neutral line is interrupted, worst case leakage could reach twice this level.

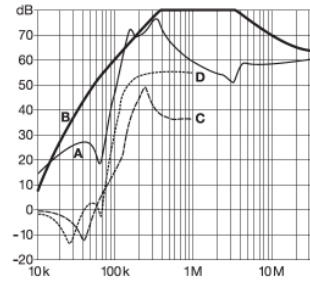
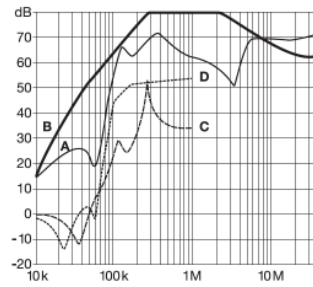
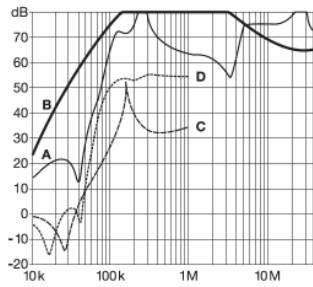
**Typical filter attenuation**

Per CISPR 17; A = 50Ω/50Ω sym; B = 50Ω/50Ω asym; C = 0.1Ω/100Ω sym; D = 100Ω/0.1Ω sym

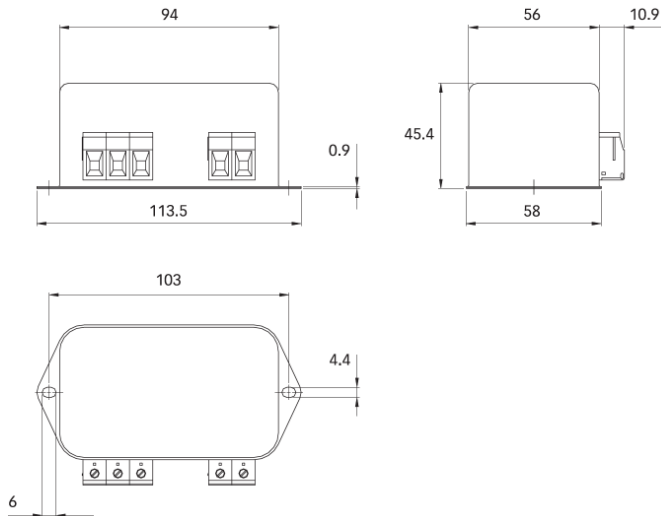
6A types

10A types

16A types




**Mechanical data**



All dimensions in mm, 1 inch = 25.4mm Tolerances according: ISO 2768-m / EN 22768-m

**Filter input/output connector cross sections**

	 -29
Solid wire	6mm <sup>2</sup>
Flex wire	4mm <sup>2</sup>
AWG type wire	AWG 10
Recommended torque	0.6 - 0.8Nm

Please visit [www.schaffner.com](http://www.schaffner.com) to find more details on filter connectors.

**Headquarters, global innovation  
and development center**

**Schaffner Group**

Nordstrasse 11  
4542 Luterbach  
Schweiz  
T +41 32 681 66 26  
F +41 32 681 66 30  
[info\(at\)schaffner.com](mailto:info(at)schaffner.com)  
[www.schaffner.com](http://www.schaffner.com)

To find your local partner within  
Schaffner's global network, please go  
to [www.schaffner.com](http://www.schaffner.com)

© 2012 Schaffner Group  
Specifications are subject to change  
within notice. The latest version of the  
data sheets can be obtained from the  
website. All trademarks recognized.

Schaffner is an ISO-registered  
company.

Its products are designed and  
manufactured under the strict quality  
and environmental requirements of  
the ISO 9001 and ISO 14001  
standards.

This document has been carefully  
checked. However, Schaffner does not  
assume any liability for errors or  
inaccuracies.

**Sales and application centers**

**China**

**Schaffner EMC Ltd. Shanghai**  
T20-3, No 565 Chuangye Road  
Pudong New Area  
Shanghai 201201  
T +86 21 3813 9500  
F +86 21 3813 9501 / 02  
[cschina@schaffner.com](mailto:cschina@schaffner.com)  
<http://www.schaffner.com.cn/>

**Finland**

**Schaffner Oy**  
Sauvonrinne 19 H  
Lohja 08500  
T +358 19 35 72 71  
[finlandsales@schaffner.com](mailto:finlandsales@schaffner.com)

**France**

**Schaffner EMC S.A.S.**  
112, Quai de Bezons, Boîte postale 133  
Argenteuil 95103  
T +33 1 34 34 30 60  
F +33 1 39 47 02 28  
[francesales@schaffner.com](mailto:francesales@schaffner.com)

**Germany**

**Schaffner Deutschland GmbH**  
Westring 18  
Büren 33142  
T +49 2951 60 01 0  
F +49 2951 60 01 23  
[buerensales@schaffner.com](mailto:buerensales@schaffner.com)

**Italy**

**Schaffner EMC S.r.l.**  
Via Galileo Galilei 47  
Cinisello Balsamo (MI) 20092  
T +39 02 66 04 30 45/47  
F +39 02 61 23 943  
[italysales@schaffner.com](mailto:italysales@schaffner.com)

**Japan**

**Schaffner EMC K.K.**  
1-32-12, Kamiyama, Setagaya-ku  
Mitsui-Seimei Sangenjaya Bldg. 7F  
Tokyo 154-0011  
T +81 3 5712 3650  
F +81 3 5712 3651  
[japansales@schaffner.com](mailto:japansales@schaffner.com)  
<http://www.schaffner.jp>

**Singapore**

**Schaffner EMC Pte Ltd.**  
Blk 3015A Ubi Road 1 05-09 Kampong Ubi  
Industrial Estate  
Singapore 408705  
T +65 6377 3283  
F +65 6377 3281  
[singaporesales@schaffner.com](mailto:singaporesales@schaffner.com)

**Spain**

**Schaffner EMC España**  
Miniparc III, Edificio E  
Madrid 28109  
T +34 618 176 133  
[spainsales@schaffner.com](mailto:spainsales@schaffner.com)

**Sweden**

**Schaffner EMC AB**  
Turebergstorg 1, 6  
Sollentuna 19147  
T +46 8 5792 1121 / 22  
F +46 8 92 96 90  
[swedensales@schaffner.com](mailto:swedensales@schaffner.com)

**Switzerland**

**Schaffner EMV AG**  
Nordstrasse 11  
Luterbach 4542  
T +41 32 6816 626  
F +41 32 6816 641  
[sales@schaffner.ch](mailto:sales@schaffner.ch)

**Taiwan R.O.C.**

**Schaffner EMV Ltd.**  
6F. No. 413 Rui Guang Road  
Neihu District Taipei City 114  
T +886 2 87525050  
F +886 2 87518086  
[taiwansales@schaffner.com](mailto:taiwansales@schaffner.com)

**Thailand**

**Schaffner EMC Co. Ltd.**  
Amphur Muang P.O. Box 14  
Northern Region Industrial Estate 67 Moo 4  
Tambon Ban Klang  
Lamphun 51000  
T +66 53 58 11 04  
F +66 53 58 10 19  
[thailandsales@schaffner.com](mailto:thailandsales@schaffner.com)

**UK**

**Schaffner Ltd.**  
Molly Millars Lane Wokingham  
Berkshire RG41 2PL  
T +44 118 9770070  
F +44 118 9792969  
[uksales@schaffner.com](mailto:uksales@schaffner.com)  
<http://www.schaffner.uk.com>

**USA**

**Schaffner EMC Inc.**  
52 Mayfield Avenue  
Edison 08837  
T 1-800-367-5566  
T 732-225-9533  
F 732-225-4789  
[usasales@schaffner.com](mailto:usasales@schaffner.com)  
<http://www.schaffner.com/us>