

HID-Basic BSN/BMH series multi-wattage for SON/CDO/CDM/MH...

BSN 70/100 L407-TS 230/240V 50Hz BC1-123

Impregnated electromagnetic copper/iron double-wattage ballasts for use with an external series (superimposed) ignitor for CDO, MH, HPI (Plus) and SON lamps

Product data

• General Characteristics

Rated Number of Lamps	1 piece
Rated Ballast-Lamp Power	70/100
Rated Lamptype	SON/CDO
Application code	L407-TS
Line Voltage	230/240 V
Line Frequency	50 Hz
Design	BC1-123

• Operating Characteristics

Input current with PF-correct.	0.45/0.6 A
Input current w/o PF-correct.	0.98/1.2 A
Mains voltage safety (AC)	-10%/+10%
Mains voltage performance (AC)	-8%/+6%
PowerFactor 100% output power	0.85 -
PowerFactor w/o PF compens.	0.40 -
Power losses gear	11.2/15.3 W

• Wiring Characteristics

Connector type	Screw
Striplength	7.0 mm
Wcs Ballast contacts	0.70-4.00 mm ²

• Temperature Characteristics

Active temperature protection	Yes
-------------------------------	-----

T-storage	-30 (min), 130 (max) C
T-winding maximum (tw)	130 (max) C
Delta-T normal conditions	60/75 C

• Approval & Application Chars

CE marking	Yes
ENEC certificate	Yes

• Product Dimensions

Length A1	123.0 mm
Fixing Hole Distance	98.0 mm
Length A2	
Width B1	61.0 mm
Height C1	52.0 mm
Fixing Hole Diameter D1	6.2 mm

• Product Data

Order code	913700270526
Full product code	913700270526
Full product name	BSN 70/100 L407-TS 230/240V 50Hz BC1-123
Order product name	BSN 70/100 L407-TS 230/240V 50Hz BC1-123
Pieces per pack	1
Packing configuration	6
Packs per outerbox	6
Bar code on pack - EAN1	8711500060495
Bar code on outerbox - EAN3	8711500060501

PHILIPS

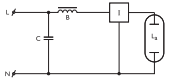
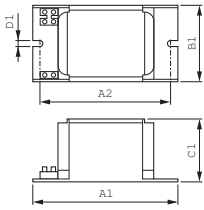
sense and simplicity

HID-Basic BSN/BMH series multi-wattage for SON/CDO/CDM/MH...

Logistic code(s) - 913700270526
12NC

Net weight per piece 1.310 kg

Dimensional drawing



Product	A1 (Norm)	A2 (Norm)	B1 (Norm)	C1 (Norm)	D1 (Norm)
BSN 70/100 L407-TS 230/240V 50Hz BC1-123	123.0	98.0	61.0	52.0	6.2



© 2011 Koninklijke Philips Electronics N.V.
All rights reserved.

Specifications are subject to change without notice. Trademarks are the property of Koninklijke Philips Electronics N.V. or their respective owners.

www.philips.com/lighting

2011, May 14
data subject to change