



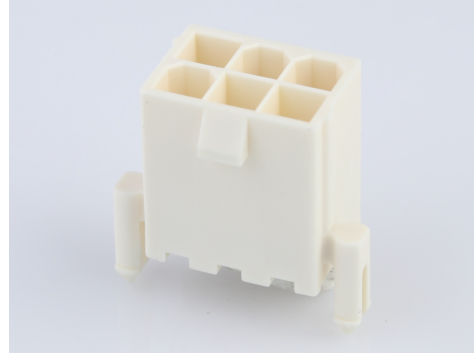
**Part Number :** [1724479704](#)

**Product Description :** Mini-Fit Versa Color Header, Dual Row, Vertical, 4 Circuits, Nylon 6/6, UL 94V-0, Tin (Sn) Plating, Glow-Wire Capable, Natural

**Series Number :** 172447

**Status :** Active

**Product Category :** PCB Headers and Receptacles



---

## Documents & Resources

### Drawings

[Drawing 1724479704\\_sd.pdf](#)

### 3D Models and Design Files

[3D Model 1724479704\\_stp.zip](#)

### Specifications

[Application Specification 1722990000-AS-000.pdf](#)


[Test Summary TS-5556-002-001.pdf](#)

[Test Summary TS-5566-002-001.pdf](#)

---

## Product Environment Compliance

### Compliance

GADSL/IMDS	Not Relevant
China RoHS	
EU ELV	Not Relevant
Low-Halogen Status	Low-Halogen per IEC 61249-2-21
REACH SVHC	Not Contained per D(2023)3788-DC (14 Jun 2023)
EU RoHS	Compliant per EU 2015/863

### [Multiple Part Product Compliance Statements](#)

- Eu RoHS
- REACH SVHC
- Low-Halogen

### [Multiple Part Industry Compliance Documents](#)

- IPC 1752A Class C
- IPC 1752A Class D
- Molex Product Compliance Declaration
- IEC-62474
- chemSHERPA (xml)

EU RoHS Certificate of Compliance

---

## Part Details

### General

Status	Active
Category	PCB Headers and Receptacles
Series	172447
Description	Mini-Fit Versa Color Header, Dual Row, Vertical, 4 Circuits, Nylon 6/6, UL 94V-0, Tin (Sn) Plating, Glow-Wire Capable, Natrual
Application	Power, Wire-to-Board
Component Type	PCB Header
Product Family	Mini-Fit Family Power Connectors
Product Name	Mini-Fit Versa Color
UPC	195842703704

### Agency

UL	E29179
----	--------

### Electrical

Current - Maximum per Contact	9.0A
Voltage - Maximum	600V AC (RMS)/DC

### Physical

Breakaway	No
Circuits (Loaded)	4
Circuits (maximum)	4
Color - Resin	Natural
Durability (mating cycles max)	30
First Mate / Last Break	No

Flammability	94V-0
Glow-Wire Capable	Yes
Guide to Mating Part	No
Keying to Mating Part	Yes
Lock to Mating Part	Yes
Material - Metal	Brass
Material - Plating Mating	Tin
Material - Resin	Nylon
Net Weight	1.092/g
Number of Rows	2
Orientation	Vertical
Packaging Type	Tray
PCB Locator	Yes
PCB Retention	Yes
PCB Thickness - Recommended	1.60mm
Pitch - Mating Interface	4.20mm
Pitch - Termination Interface	4.20mm
Polarized to Mating Part	Yes
Polarized to PCB	Yes
Shrouded	Fully
Stackable	No
Temperature Range - Operating	-40° to +105°C
Termination Interface Style	Through Hole

---

## Mates With / Use With

### Mates with Part(s)

Description	Part Number
Mini-Fit Jr. Dual Row Receptacle Housings	<u>46992</u>