

## Metal Case Draw Wire Potentiometer

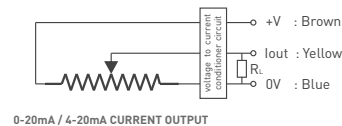
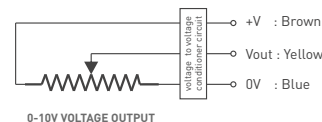
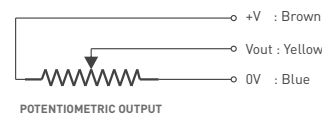
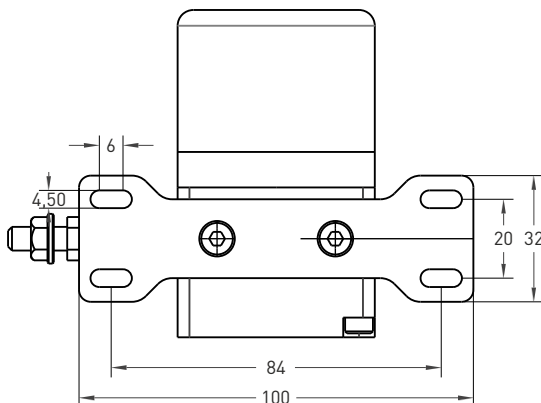
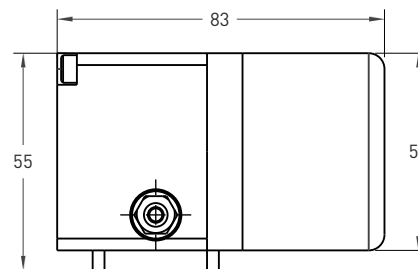
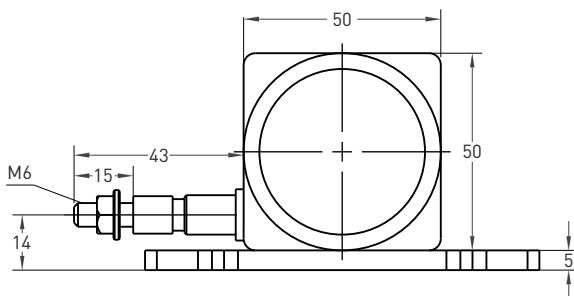


- Measuring strokes 100 ... 1200 mm
- 5 kOhm / 10 kOhm resistive type or with internal voltage / current conditioner circuit
- Easy mounting

### Technical Specifications

Type of measurement	Resistive
Linearity	0,5%
Measurement stroke	100 ... 1200 mm
Output signal type	Voltage divider
Output type	Resistive output, 0 - 10 V, 0 - 20 mA veya 4 - 20 mA
Supply voltage	24 VDC max., 15 - 30 V (voltage / current output)
Electrical connections	2,5m kablo (standard)
Max. speed	0,5 m/s
Case material	Aluminium
Weight	< 500 gr.
IP degree	IP 54
Operating temperature	-20°C ... +80°C
Storage temperature	-30°C ... +90°C

### Mechanical Specifications



Model	Case type	Measurement stroke	Linearity	Output	Connector / Cable	Cable output
DWPM	1	100	D	5K	2M5	R
DWPM	1	100 mm 300 mm 500 mm 700 mm 1200 mm	D: 0,5%	5K: 5 Ω 10K: 10 Ω V10: 0 - 10 V I 4 : 4 - 20 mA I 20: 0 - 20 mA	2M5: 2,5 meter cable 5M : 5 meter cable 8M : 8 meter cable 10M: 10 meter cable	R: Radial