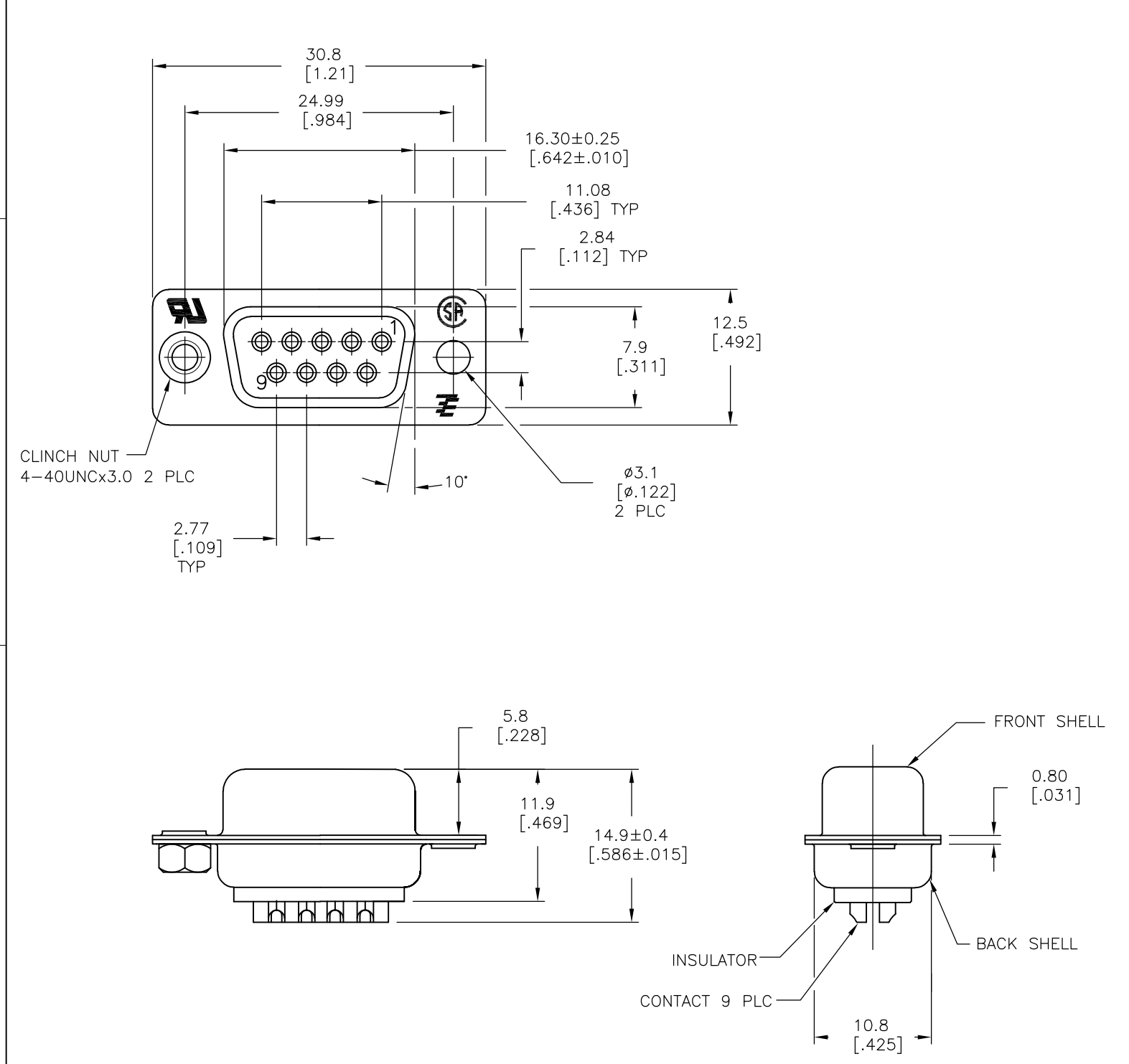


THIS DRAWING IS UNPUBLISHED. RELEASED FOR PUBLICATION
 © COPYRIGHT - By - ALL RIGHTS RESERVED.

| LOC | DIST | REVISIONS | | | |
|-----|------|-------------|---------------------------|-----------|-------|
| P | LTR | DESCRIPTION | DATE | DWN | APVD |
| GP | 00 | AA | REVISED PER ECO-14-002311 | 17FEB2014 | BM DG |



- 1 MATERIAL:
 FRONT INSULATOR: PBT, 30 %GF, UL94V-0, BLACK COLOR
 BACK INSULATOR: PBT, 30 %GF, UL94V-0, BLACK COLOR
 CONTACT: BRASS
 FRONT & BACK SHELL: STEEL
 CLINCH NUTS: BRASS
- 2 FINISH:
 CONTACT: GOLD PLATING 0.00002[.000008] MIN ON CONTACT AREA 0.00229[.000090]
 MIN TIN-LEAD PLATING ALL OVER 0.00127[.000050] MIN NICKEL
- 3 CONTACT: GOLD PLATING 0.00076[.000030] MIN ON CONTACT AREA 0.00229[.000090]
 MIN TIN-LEAD PLATING ALL OVER 0.00127[.000050] MIN NICKEL
- 4 SHELL: BRIGHT TIN 0.0241[.000095] MIN FULL SHELL
- 5 SHELL: BLUE ZINC: 0.00508[.000200] - 0.00762[.000300] OVER ENTIRE SHELL
- 6 CONTACT: GOLD PLATING 0.00002[.000008] MIN ON CONTACT AREA 0.00229[.000090]
 MIN HOT DIPPED TIN-COPPER PLATING ALL OVER 0.00127[.000050] MIN NICKEL
- 7 CLINCH NUTS: NICKEL PLATING .00305-.00508[.000120-.000200]
- 8 SPECIFICATION
 ELECTRICAL CHARACTERISTICS: CURRENT RATING: 3 AMPERES
 DIELECTRIC WITHSTANDING VOLTAGE: AC 1000V r.m.s
 INSULATION RESISTANCE: 5000 MEGOHMS MINIMUM AT DC 500V
 CONTACT RESISTANCE: 10 MILLIOHMS MAXIMUM.
- 9 RECEPTACLE ASSEMBLY MATES WITH ANY 9 POSITION PLUG IN AMPLIMITE SERIES
- 10 SOLDER CUP WILL ACCOMODATE 20 AWG MAX WIRE.
- 11 ROHS 2002/95/EC/COMPLIANT
- 12 CONTACT: GOLD PLATING 0.00076[.000030] MIN ON CONTACT AREA 0.00229[.000090]
 MIN HOT DIPPED TIN-COPPER ALL OVER 0.00127[.000050] MIN NICKEL PLATING

| REV | DESCRIPTION | DATE | DWN | APVD | PART NO. |
|-----|--------------------------|------|-----|------|------------|
| 11 | OBsolete | | | | 5-747905-4 |
| 11 | STANDARD | | | | 5-747905-7 |
| 11 | STANDARD | | | | 5-747905-5 |
| 11 | STANDARD | | | | 5-747905-2 |
| 11 | STANDARD | | | | 747905-8 |
| | SUPERSEDED TO 5-747905-2 | | | | 747905-7 |
| | SUPERSEDED TO 5-747905-7 | | | | 747905-5 |
| | SUPERSEDED TO 5-747905-5 | | | | 747905-4 |
| | SUPERSEDED TO 5-747905-4 | | | | 747905-2 |
| | SUPERSEDED TO 5-747905-2 | | | | |

| | | | | |
|----------------|-------------|----------|--------|----------|
| PACKAGING TYPE | CLINCH NUTS | CONTACTS | SHELLS | PART NO. |
|----------------|-------------|----------|--------|----------|

| | | | | | |
|--|--|------------------------|---|-----------|------------|
| THIS DRAWING IS A CONTROLLED DOCUMENT. DIMENSIONING AND TOLERANCING PER ASME Y14.5M-2009 | | DWN M.BINNER 03MAR03 | TE Connectivity | | |
| DIMENSIONS: mm | | CHK R.BENDORF 05MAR03 | | | |
| TOLERANCES UNLESS OTHERWISE SPECIFIED: | | APVD R.BENDORF 05MAR03 | NAME | | |
| 0 PLC ± - | | PRODUCT SPEC | RECEPTACLE ASSEMBLY, SOLDER CUP, SIZE 1, 9 POSITION, AMPLMITE | | |
| 1 PLC ± 0.25 | | APPLICATION SPEC | SIZE | CAGE CODE | DRAWING NO |
| 2 PLC ± 0.13 | | WEIGHT | A3 | 00779 | C-747905 |
| 3 PLC ± 0.05 | | CUSTOMER DRAWING | SCALE | SHEET | REV |
| 4 PLC ± - | | | 2:1 | 1 OF 1 | AA |
| ANGLES ± - | | | | | |
| MATERIAL | | | | | |
| FINISH SEE TABLE | | | | | |