



Model Number

OMH-SLCT-100-2500

Mounting base for floor mounting and cover plate

Features

- Eight grooves for mounting photoelectric sensors or accessories, three on the inside and five on the outside
- Corner mounting of photoelectric sensors with a directional difference of 90°
- Cover prepared for indicator light mounting

Accessories

OMH-SLCT-200

Floor mount

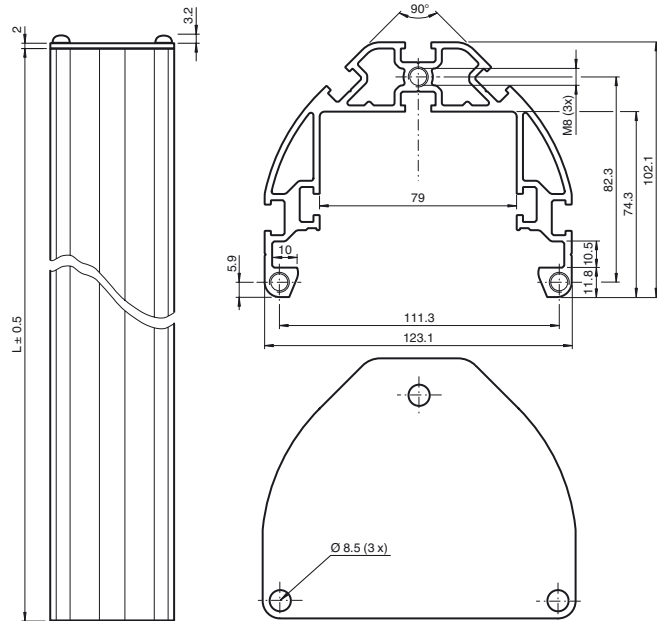
OMH-SLCT-120-2500

Side protection for mounting base

OMH-SLCT-10

OMH-SLCT-11

Dimensions



Technical data

General specifications

Setting angle	± 5 ° with product OMH-SLCT-200
Tilting angle	± 2.5 ° with product OMH-SLCT-200

Ambient conditions

Ambient temperature	-40 ... 80 °C (-40 ... 176 °F)
Storage temperature	-40 ... 80 °C (-40 ... 176 °F)
Relative humidity	80 % , noncondensing

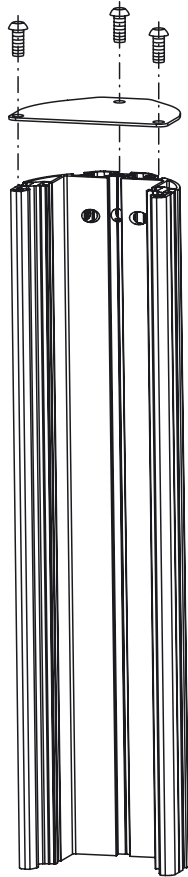
Mechanical specifications

Housing length L	2480 mm
Material	
Housing	anodized aluminum
Mass	approx. 11.8 kg

General information

Scope of delivery	Mounting base, cover plate The three fillister head screws for the cover plate are supplied with the floor mount
-------------------	---

Mechanical arrangement



Release date: 2013-09-23 10:14 Date of issue: 2013-09-23 251612_eng.xml