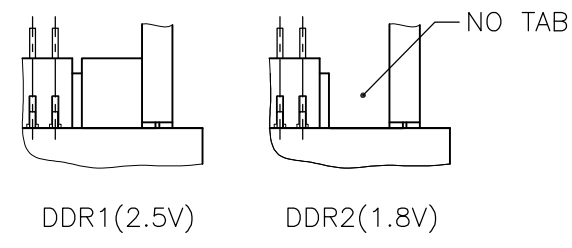
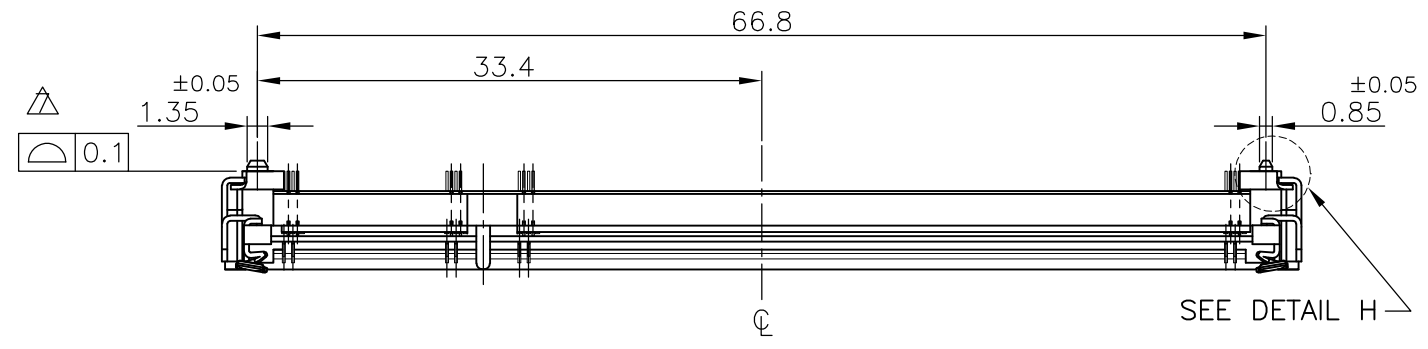


THIS DRAWING IS UNPUBLISHED. RELEASED FOR PUBLICATION AUG, 2003.

© COPYRIGHT 2003 BY TYCO ELECTRONICS CORPORATION. ALL RIGHTS RESERVED.

| LOC | DIST |
|-----|------|
| J | |

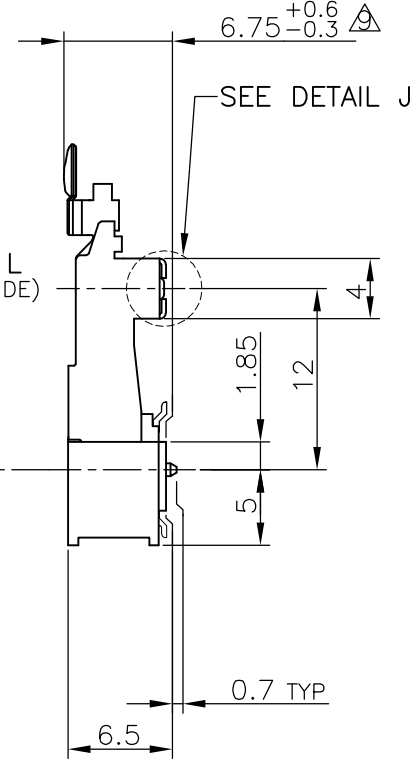
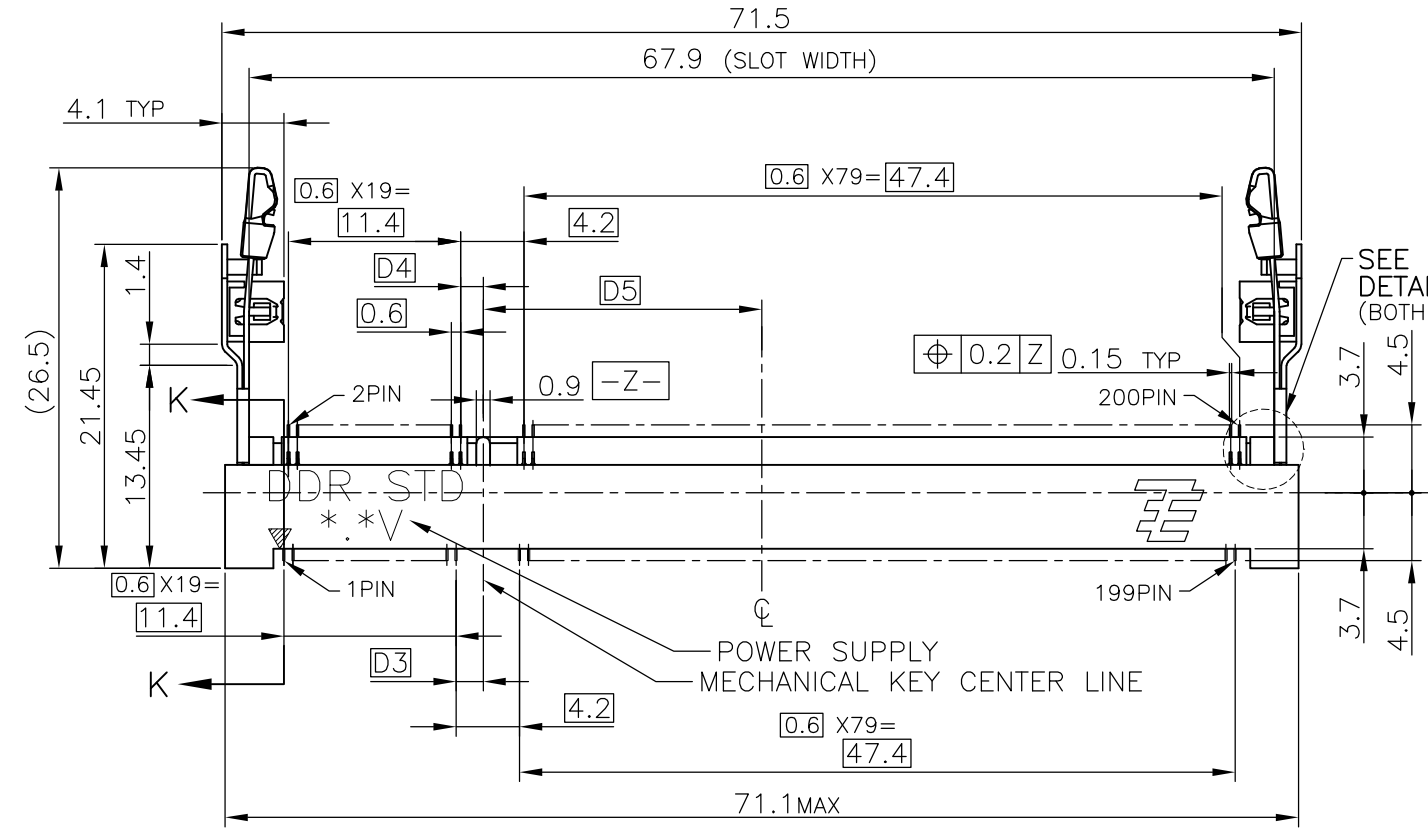
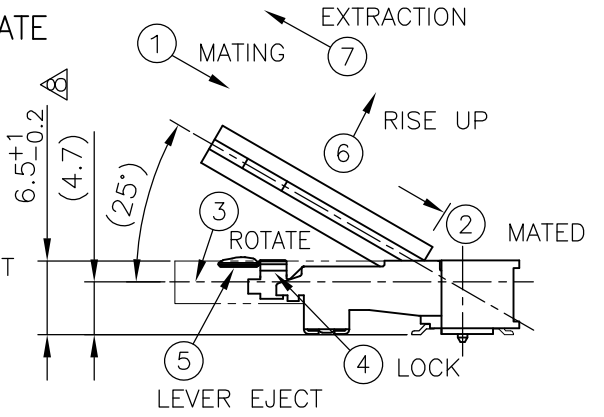
| P | | LTR | | DESCRIPTION | DATE | DWN | APVD |
|---|--|-----|--|---------------|---------|-----|------|
| | | D1 | | ECR-10-014684 | 22JUL10 | B.W | S.Y |



DETAIL L (SCALE 5:1)

HOW TO MATE AND UNMATE

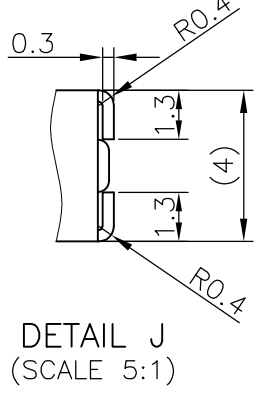
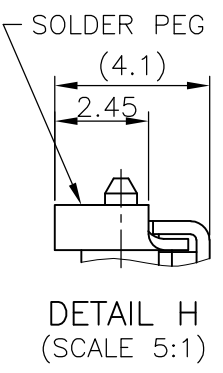
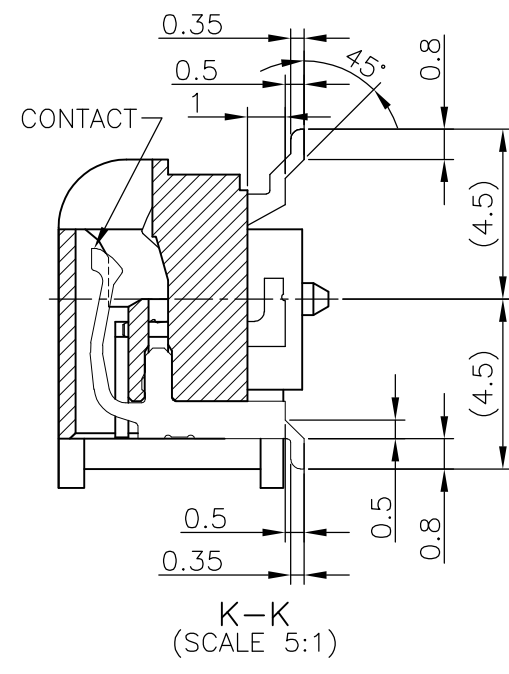
- MATE: ① → ④
- UNMATE: ⑤ → ⑦



(APPLIED TO SHEET 1-2)

- MATERIAL ; HOUSING: HIGH TEMPERATURE THERMO PLASTIC UL94V-0
CONTACT: COPPER ARROY
LOCK LEVER: STAINLESS STEEL
SOLDER PEG: COPPER ARROY
- FINISH ; CONTACT AREA: GOLD FLASH ON 0.0013MIN ALL OVER NICKEL.
SOLDERING AREA: GOLD FLASH PLT.
SOLDER PEG: TIN PLATING.

- ⊕ MECHANICAL KEY POSITION OF CONNECTOR SEE TABLE.
- ⊕ TOLERANCES NON-CUMULATIVE.
- ⊕ NOT TO SCALE.
- ⊕ INSIDE MUST BE RESIST COAT EXCEPT SOLDER PATTERN.
- ⊕ COPLANARITY : 0.1 MAX.
- ⊕ THE FLOATING VALUE BY SOLDERING IS NOT INCLUDED.
- ⊕ NOT MATING CONDITION.
- 10 IF THE MODULE DOESN'T INSERT AND LOCK IN THE LATCH SMOOTHLY, OPEN WIDE BOTH LATCHES BY MANUAL. AND THE MODULE MUST BE INSERTED AND LOCKED IN THE LATCH.

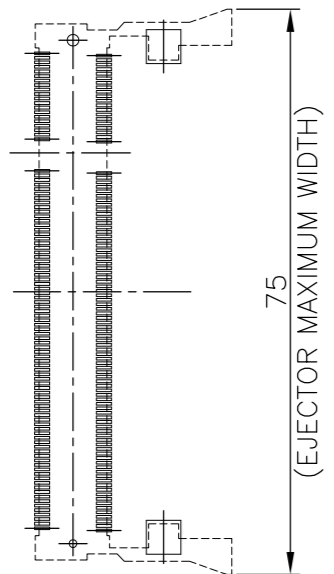


GENERAL TOLERANCE
 10 ≥ : ±0.2
 30 ≥ > 10: ±0.25
 100 ≥ > 30: ±0.3
 ANGLES: ±3°

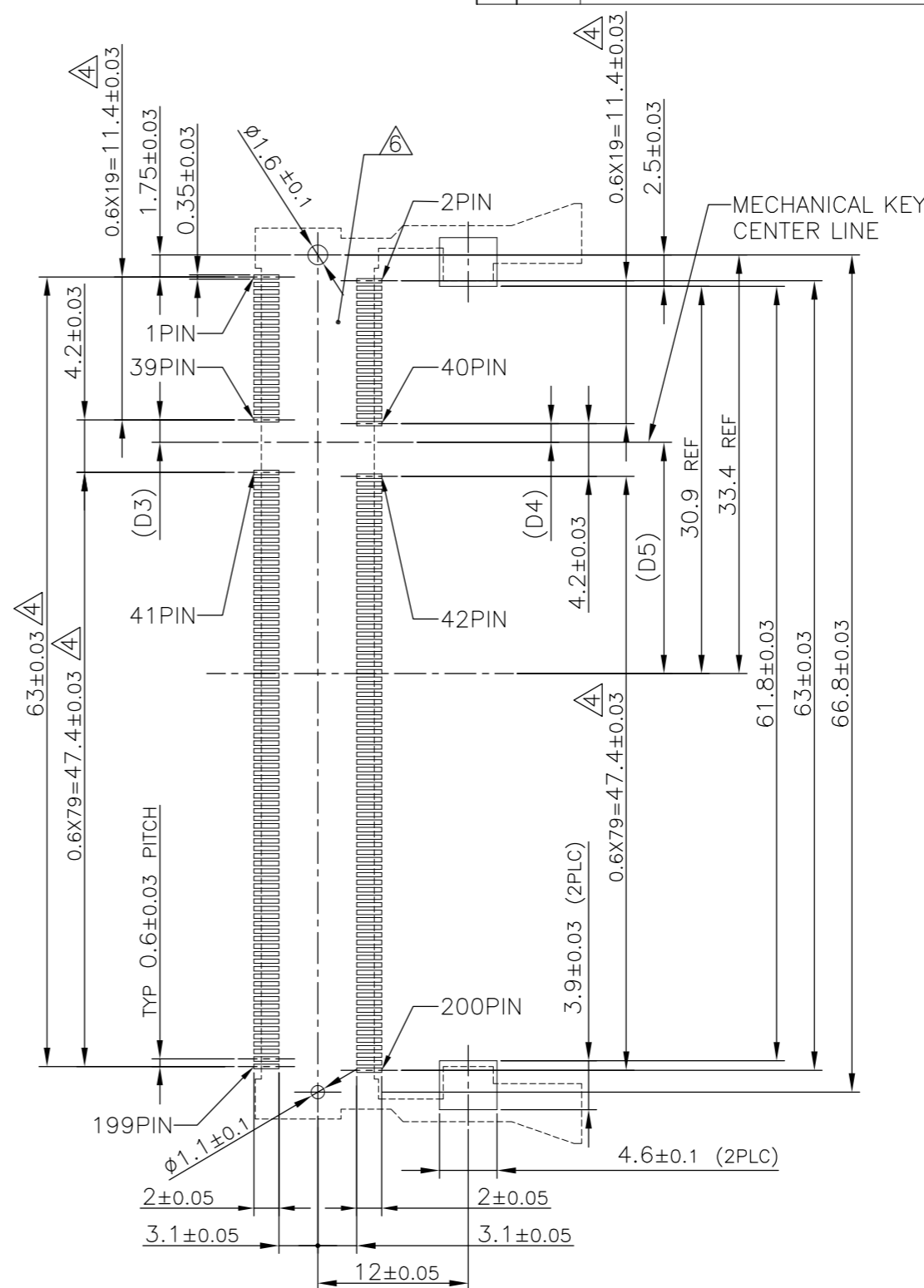
| | | | | | | | |
|--|---------|--------------------------|--|-----------|------------|---------------|-----------|
| AVAILABLE | —H— | 1.8V (DDR2) | 17.55 | 2.4 | 2.7 | 200 | 1717468-4 |
| AVAILABLE | —H— | 2.5V (DDR1) | 18.45 | 1.5 | 1.8 | 200 | 1717468-3 |
| TOOLING STATUS | REMARKE | POWE SUPPLY (TYPE) | D5 | D4 | D3 | POS | PART NO. |
| THIS DRAWING IS A CONTROLLED DOCUMENT. | | DWN T.FUMIKURA 22AUG03 | Tyco Electronics AMP K.K. Kawasaki, Japan | | | | |
| DIMENSIONS: MM | | CHK T.KUSUHARA 22AUG03 | | | | | |
| TOLERANCES UNLESS OTHERWISE SPECIFIED: | | APVD H.MURAMATSU 22AUG03 | | | | | |
| 0 PLC ± | | NAME | | | | | |
| 1 PLC ± | | PRODUCT SPEC | DDR1 & DDR2 SODIMM SOCKET | | | | |
| 2 PLC ± | | APPLICATION SPEC | 0.6mm PITCH 200POS | | | | |
| 3 PLC ± | | WEIGHT | 6.5 HEIGHT STANDARD TYPE | | | | |
| 4 PLC ± | | CUSTOMER DRAWING | SIZE | CAGE CODE | DRAWING NO | RESTRICTED TO | |
| ANGLES ± | | SCALE | A3 | 00779 | C-1717468 | 2:1 | |
| FINISH | | SHEET | 1 | | OF | 4 | |
| | | REV | | | | | D1 |

| LOC | DIST | REVISIONS | | | | | |
|-----|------|-----------|-----|-------------|------|-----|------|
| J | | P | LTR | DESCRIPTION | DATE | DWN | APVD |
| | | - | | SEE SHEET 1 | - | - | - |

REFERENCE P.C.BOARD PATTERN LAYOUT (CONNECTOR MOUNTING SIDE)



REAL SIZE (SCALE 1:1)

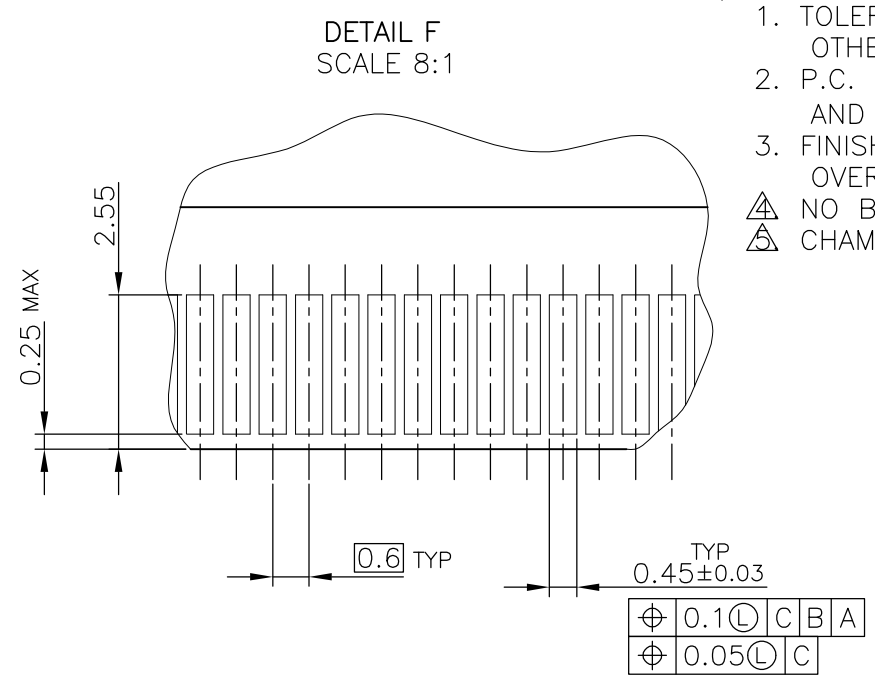
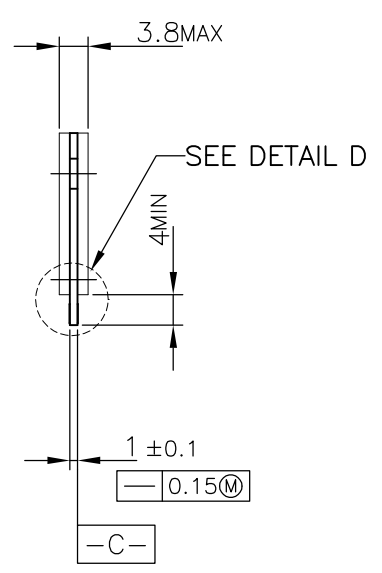
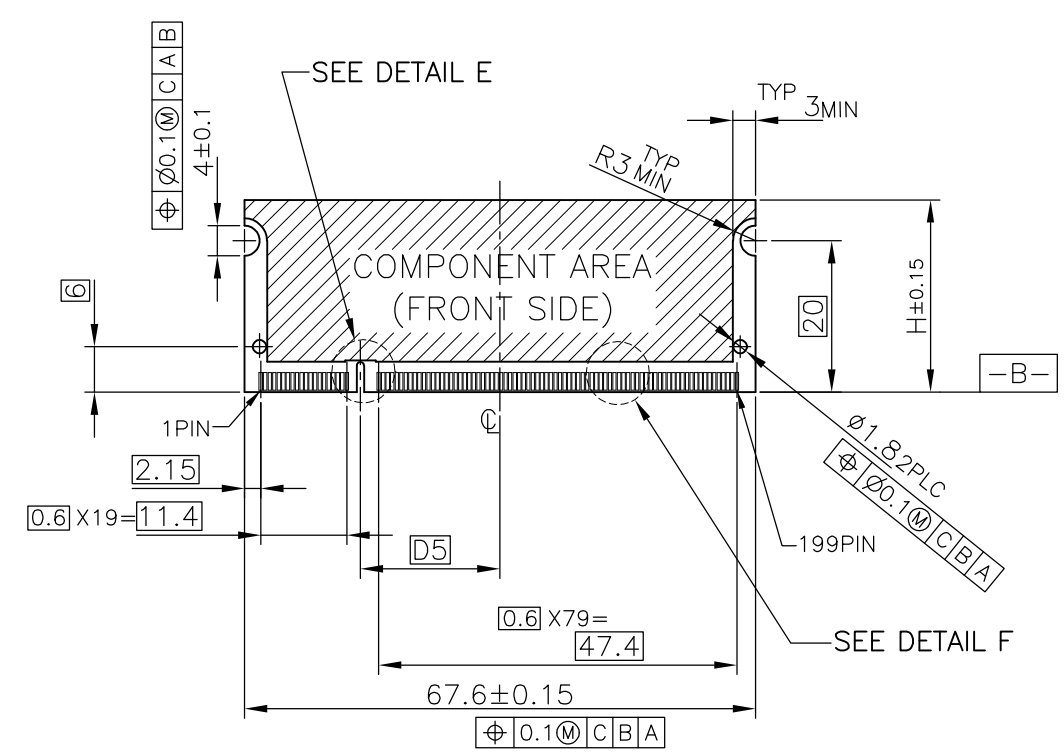


| | | | |
|--------------|-------|-----|-----|
| 1.8V | 17.55 | 2.4 | 2.7 |
| 2.5V | 18.45 | 1.5 | 1.8 |
| POWER SUPPLY | D5 | D4 | D3 |

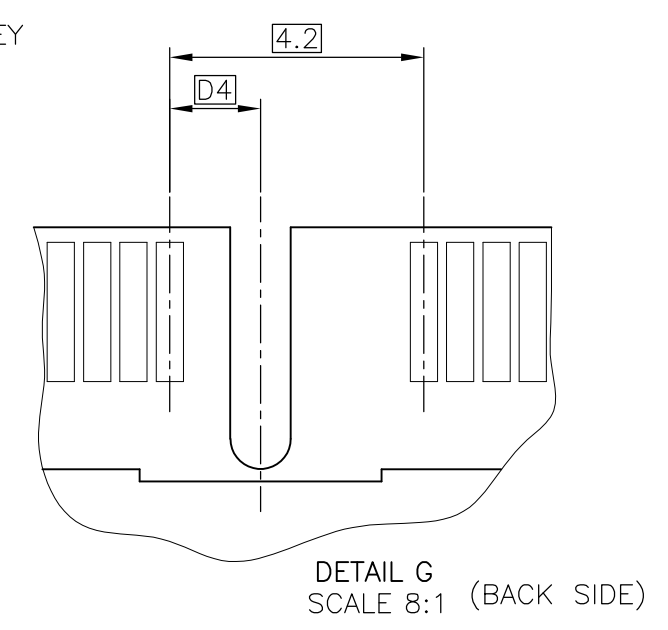
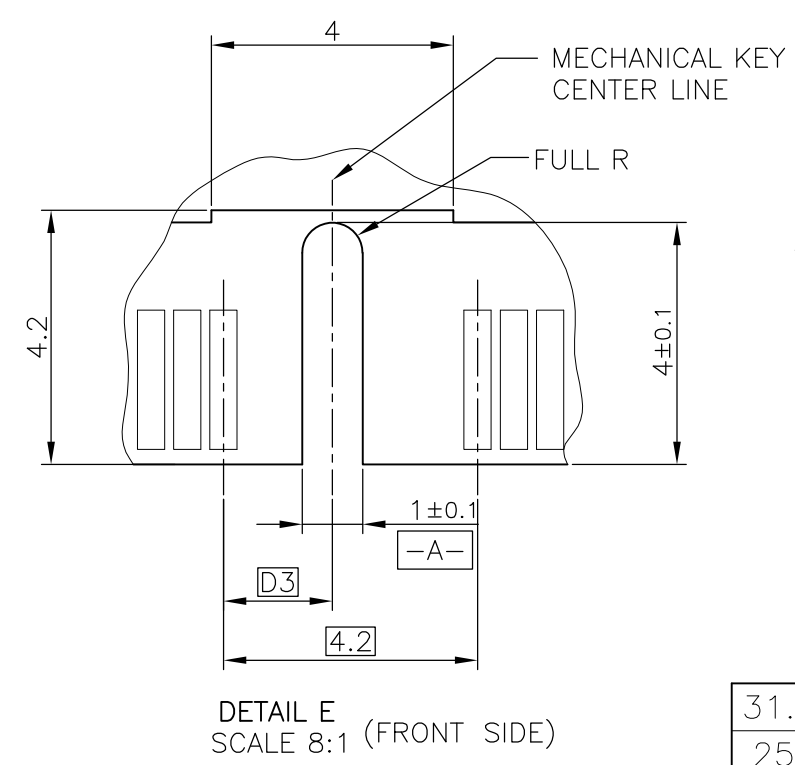
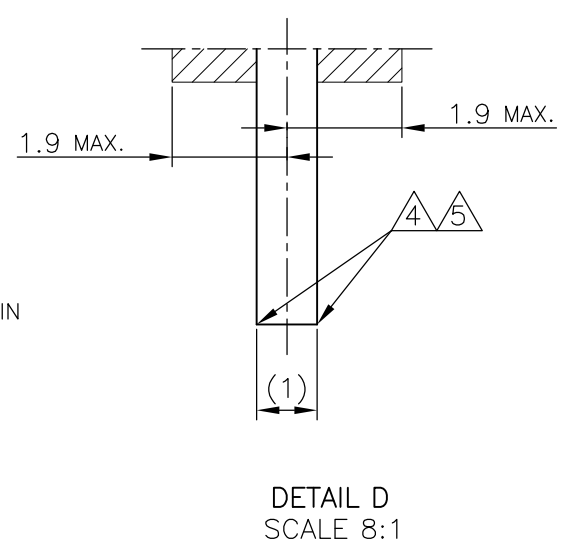
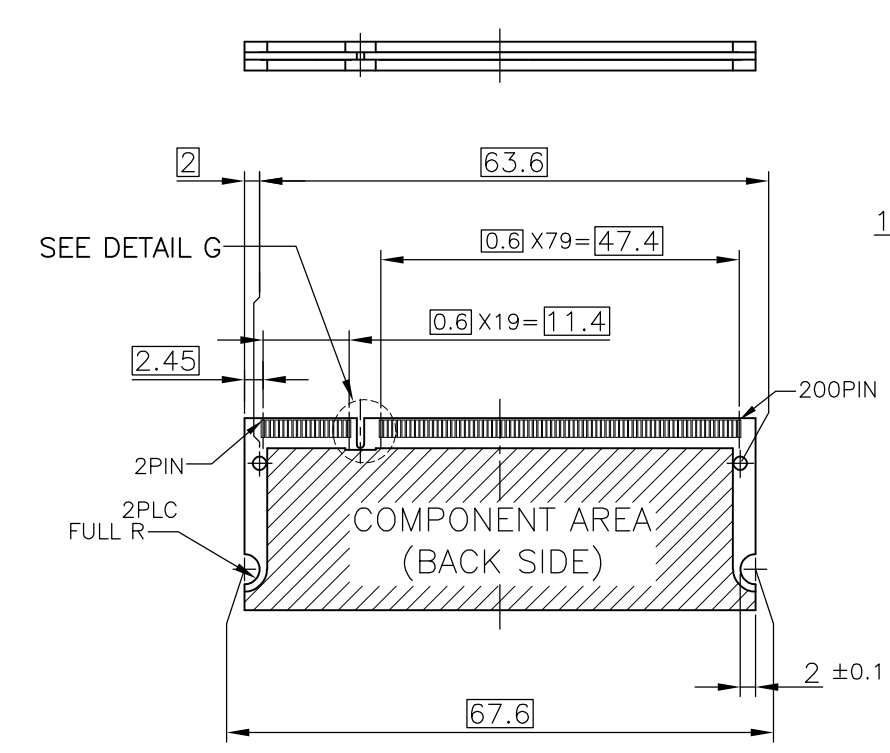
| | | | | | | |
|--|--|------------------|---------------------------|-----------|---------------------------|---------------|
| THIS DRAWING IS A CONTROLLED DOCUMENT. | | DWN | Tyco Electronics | | Tyco Electronics AMP K.K. | |
| DIMENSIONS: MM | | CHK | Kawasaki, Japan | | NAME | |
| TOLERANCES UNLESS OTHERWISE SPECIFIED: | | APVD | DDR1 & DDR2 SODIMM SOCKET | | | |
| 0 PLC ± | | PRODUCT SPEC | 0.6mm PITCH 200POS | | | |
| 1 PLC ± | | APPLICATION SPEC | 6.5 HEIGHT STANDARD TYPE | | | |
| 2 PLC ± | | WEIGHT | SIZE | CAGE CODE | DRAWING NO | RESTRICTED TO |
| 3 PLC ± | | CUSTOMER DRAWING | A3 | 00779 | C-1717468 | |
| 4 PLC ± | | | SCALE | SHEET | OF | REV |
| ANGLES ± | | | 2:1 | 2 | 4 | D1 |
| FINISH | | | | | | |

THIS DRAWING IS UNPUBLISHED. RELEASED FOR PUBLICATION AUG. 2003.
 © COPYRIGHT 2003 BY TYCO ELECTRONICS CORPORATION. ALL RIGHTS RESERVED.

| LOC | DIST | REVISIONS | | | |
|-----|------|-------------|------|-----|------|
| P | LTR | DESCRIPTION | DATE | DWN | APVD |
| J | | SEE SHEET 1 | - | - | - |



- (APPLIED TO SHEET 3)
1. TOLERANCES ON ALL DIMENSIONS ±0.15 UNLESS OTHERWISE SPECIFIED.
 2. P.C. BOARD THICKNESS APPLIES ACROSS TABS AND INCLUDES PLATING AND/OR METALIZATION.
 3. FINISH OF PAD : GOLD PLATING 0.00076 MIN. OVER Ni PLATING 0.002MIN.
- ⚠ NO BURR
- ⚠ CHAMFER 0.25 MAX x 45° IF EXIST.



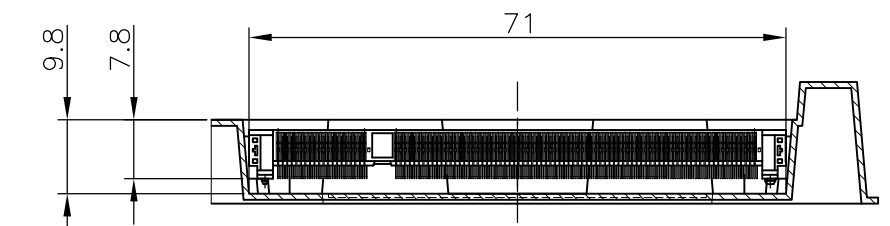
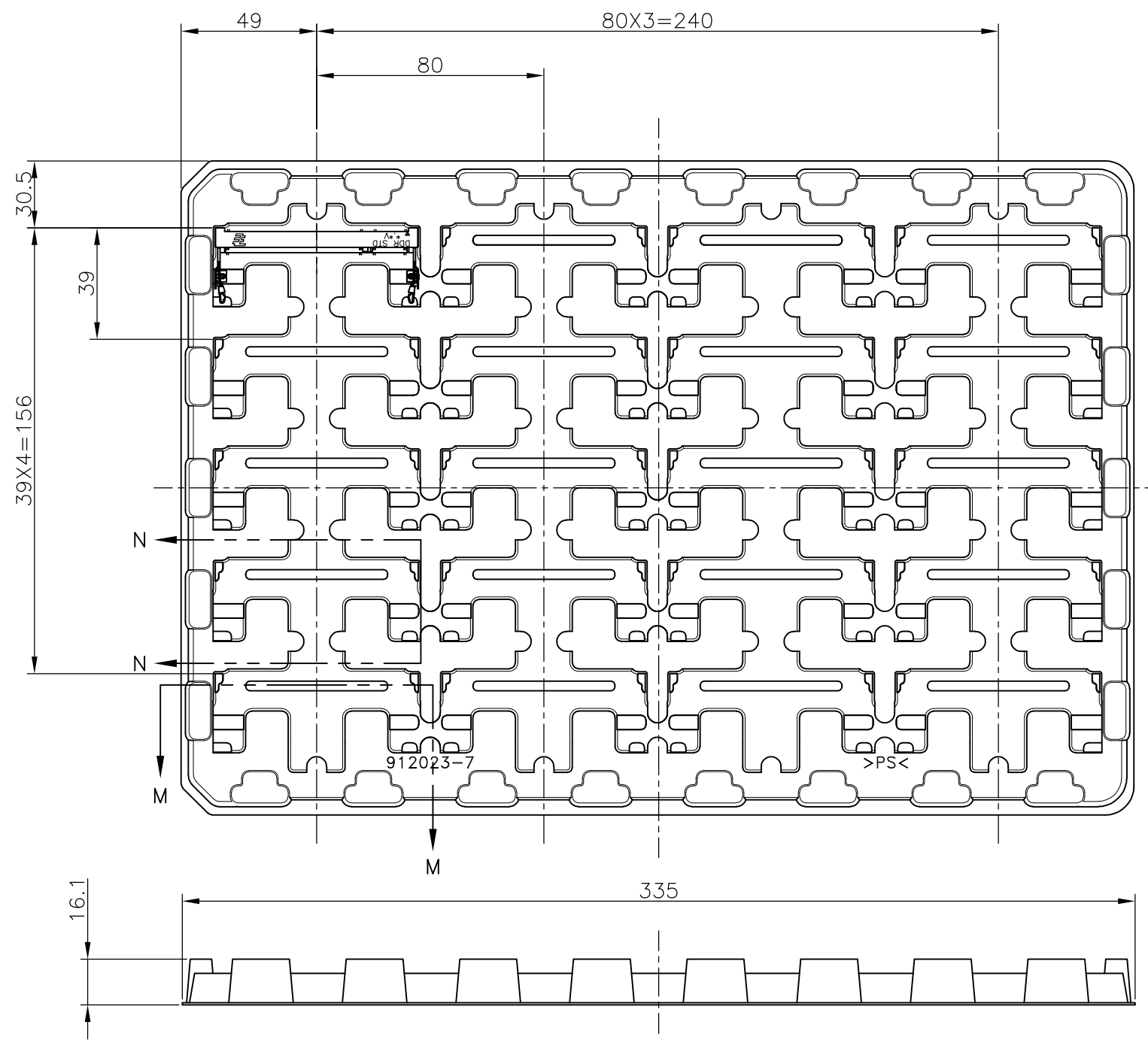
推奨基板仕様
 RECOMMENDED MATING P.C.B CONFIGURATION

| | | | | |
|-------|--------------|-------|-----|-----|
| 31.75 | 1.8V | 17.55 | 2.4 | 2.7 |
| 25.4 | 2.5V | 18.45 | 1.5 | 1.8 |
| H | POWER SUPPLY | D5 | D4 | D3 |

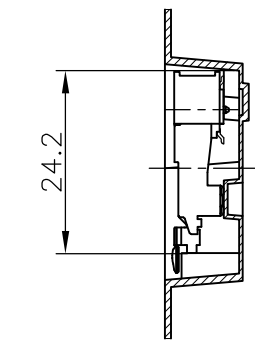
| | | | | | | |
|---|--|------------------|---|-----------|------------|---------------|
| THIS DRAWING IS A CONTROLLED DOCUMENT. | | DWN | Tyco Electronics AMP K.K. Kawasaki, Japan | | | |
| DIMENSIONS: MM | | CHK | | | | |
| | | APVD | | | | |
| TOLERANCES UNLESS OTHERWISE SPECIFIED: 0 PLC ± 1 PLC ± 2 PLC ± 3 PLC ± 4 PLC ± ANGLES ± FINISH ± | | NAME | | | | |
| MATERIAL | | PRODUCT SPEC | DDR1 & DDR2 SODIMM SOCKET 0.6mm PITCH 200POS 6.5 HEIGHT STANDARD TYPE | | | |
| | | APPLICATION SPEC | SIZE | CAGE CODE | DRAWING NO | RESTRICTED TO |
| | | WEIGHT | A3 | 00779 | C-1717468 | |
| | | CUSTOMER DRAWING | SCALE | SHEET | OF | REV |
| | | | 2:1 | 3 | 4 | D1 |

THIS DRAWING IS UNPUBLISHED. RELEASED FOR PUBLICATION AUG ,2003.
 © COPYRIGHT 2003 BY TYCO ELECTRONICS CORPORATION. ALL RIGHTS RESERVED.

| LOC | DIST | REVISIONS | | | |
|-----|------|-------------|------|-----|------|
| P | LTR | DESCRIPTION | DATE | DWN | APVD |
| J | | SEE SHEET 1 | - | - | - |



M-M
SCALE 1:1
(180DEG. ROTATE)



N-N
SCALE 1:1

1. THE DIRECTION OF EACH CONNECTOR ON A TRAY IS REFERRED TO THIS DRAWING.
2. GENERAL TOLERANCE: ±0.5

| | |
|-----------|-----------|
| 20EA/TRAY | 1717468-4 |
| 20EA/TRAY | 1717468-3 |
| QTY | P/N |

| | | | | | |
|---|--|------------------|-----------|--|---------------|
| THIS DRAWING IS A CONTROLLED DOCUMENT. | | DWN | | Tyco Electronics AMP K.K. Kawasaki, Japan | |
| DIMENSIONS: MM | | CHK | | | |
| TOLERANCES UNLESS OTHERWISE SPECIFIED: 0 PLC ± 1 PLC ± 2 PLC ± 3 PLC ± 4 PLC ± ANGLES ± FINISH ± | | APVD | | NAME | |
| MATERIAL | | PRODUCT SPEC | | DDR1 & DDR2 SODIMM SOCKET | |
| | | APPLICATION SPEC | | 0.6mm PITCH 200POS | |
| | | WEIGHT | | 6.5 HEIGHT STANDARD TYPE | |
| | | SIZE | CAGE CODE | DRAWING NO | RESTRICTED TO |
| | | A3 | 00779 | C-1717468 | |
| | | CUSTOMER DRAWING | | SCALE | SHEET |
| | | | | 1:2 | 4 OF 4 |
| | | | | REV | D1 |