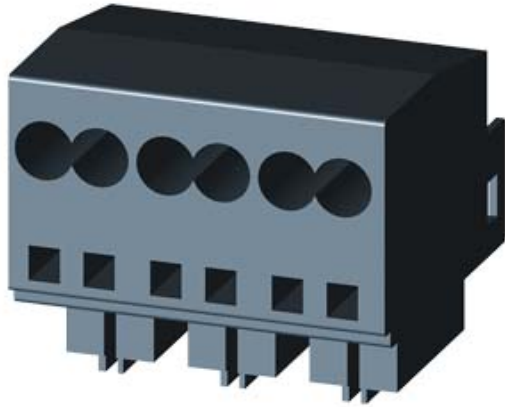


MAIN CIRCUIT TERMINALS(INT.AND CONNECTION OF MAIN CIRCUIT: SPRING-LOADED TERMINAL,



General technical data:

product brand name		SIRIUS
Product designation		main circuit terminals (ingoing as well as outgoing)
Protection class IP		IP20
Relative humidity during operation	%	10 ... 90
Ambient temperature		
• during transport	°C	-55 ... +80
• during storage	°C	-55 ... +80
• during operation	°C	-20 ... +60
Equipment marking acc. to DIN EN 61346-2		X
Equipment marking acc. to DIN 40719 extended according to IEC 204-2 acc. to IEC 750		X

Installation/ mounting/ dimensions:

Width	mm	45
Height	mm	32
Depth	mm	30

Connections/ Terminals:

Wire stripping length	mm	10
Type of electrical connection		
• for main current circuit		spring-loaded terminals
• for auxiliary and control current circuit		spring-loaded terminals
Type of connectable conductor cross-section		
• for main contacts		
— solid		up to 12 A: 2x (1.5 ... 6 mm ²), up to 32 A: 2x (2.5 ... 6 mm ²)

— finely stranded with core end processing

- for AWG conductors for main contacts

up to 12 A: 2x (1.5 ... 6 mm²), up to 32 A: 2x (2.5 ... 6 mm²)

up to 12 A: 2x (16 ... 14), 2x (14 ... 10), 1x 8, up to 32 A: 2x (14 ... 10), 1x 8

Certificates/ approvals:

Certificate of suitability

IEC / EN 60947-6-2

General Product Approval

EMC

Shipping Approval



Shipping Approval

other



LRS



PRS



RINA



RMRS

[Environmental Confirmations](#)

[Declaration of Conformity](#)

other

[other](#)

Further information

Information- and Downloadcenter (Catalogs, Brochures,...)

<http://www.siemens.com/industrial-controls/catalogs>

Industry Mall (Online ordering system)

<http://www.siemens.com/industrymall>

Cax online generator

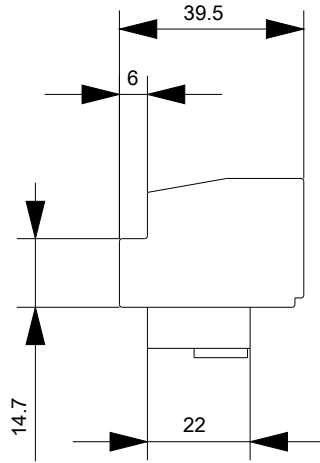
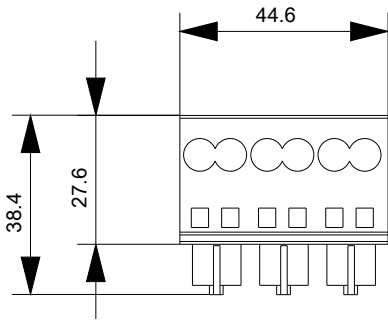
<http://support.automation.siemens.com/WW/CAXorder/default.aspx?lang=en&mlfb=3RA69202A>

Service&Support (Manuals, Certificates, Characteristics, FAQs,...)

<http://support.automation.siemens.com/WW/view/en/3RA69202A/all>

Image database (product images, 2D dimension drawings, 3D models, device circuit diagrams, EPLAN macros, ...)

<http://www.automation.siemens.com/bilddb/index.aspx?attID9=3RA69202A&lang=en>



last modified:

09.03.2015