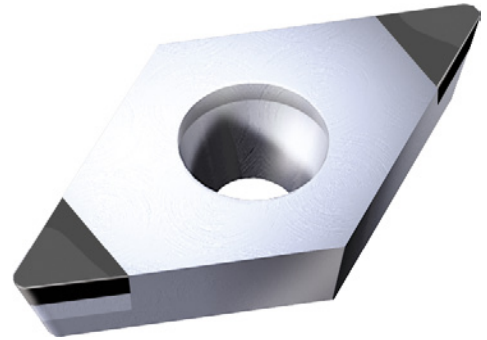


## CBN indexable insert, coated, DCGW

Type of cutting material: ABC10B/A S2

**ATORN**<sup>®</sup>

<b>Art. No.</b>	<b>17872 212</b>
<b>Shape of indexable insert ISO</b>	D
<b>Clearance angle of indexable insert ISO</b>	C
<b>Tolerance class of indexable insert ISO</b>	G
<b>Indexable insert type ISO</b>	W
<b>Size of indexable insert ISO</b>	07
<b>Thickness of indexable insert ISO</b>	02
<b>Corner radius of indexable insert ISO</b>	02
<b>ISO name</b>	DCGW 070202
<b>Cutting material</b>	CBN
<b>Type of cutting material</b>	ABC10B/A
<b>ISO-Code Rotating</b>	DCGW 070202
<b>Machining conditions for indexable insert</b>	Good, Unfavourable
<b>Design of the chamfer</b>	A (sharp)
<b>Materials group</b>	K (primary application), S (secondary application)



### EAN-Code

4050293398724

