

16

1614 23

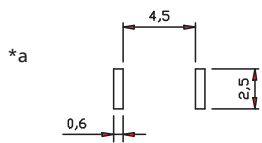
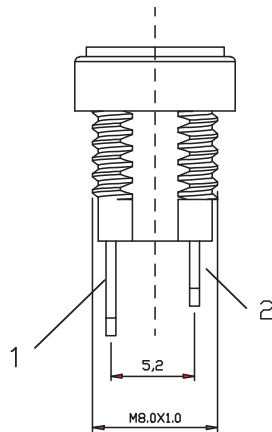
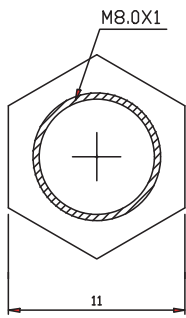
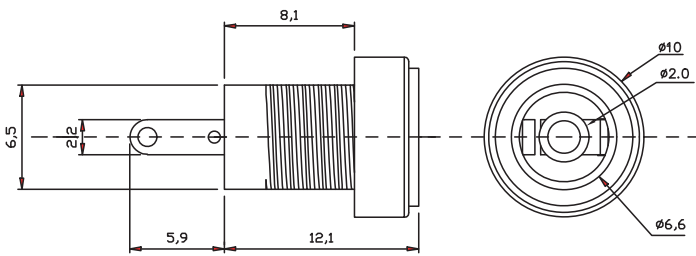
## Power supply connectors



Power supply chassis socket, straight version, with solder eyes, for printed circuit boards, for front side mounting

16

1614 23



\*a printed circuit board layout

**Environmental conditions**

Temperature range -30 °C/+70 °C

**Materials**

Insulating body PBT, V-0 according to UL94  
 Contact spring CuZn, nickel-plated  
 Contact pin CuZn, nickel-plated  
 Hexagonal nut CuZn, nickel-plated

**Mechanical data**

Diameter opening 6.6 mm  
 Diameter center pin 2.0 mm  
 Mating cycles 5000<sup>1</sup>  
 Insertion force 3–30 N  
 Withdrawal force 3–30 N

<sup>1</sup> gemessen mit einem Lehrenstecker

**Electrical data (at T<sub>amb</sub> 20 °C)**

Contact resistance ≤ 30 mΩ  
 Rated current 2 A  
 Rated voltage 30 V  
 Rated impulse voltage 500 V/60 s  
 Insulation resistance ≥ 100 MΩ

**Associated products**

Counterparts  
 ☞ 1633 02      ☞ 1633 03      ☞ NES/J 21  
 ☞ NES/J 21 W      ☞ NES/J 210      ☞ XNES/J 210

16

1614 23

Designation	Pole Number	PU (Pieces)	MDQ (Pieces)
1614 23	2	500	1000

**Packaging:**

in bulk, in a cardboard box or a plastic bag