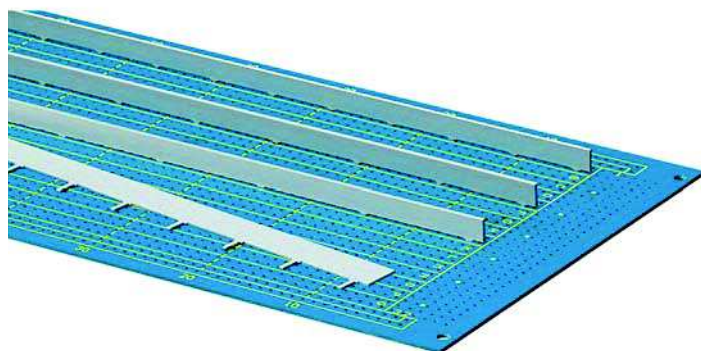


## Accessories – Horizontal busbars

### PCB busbars

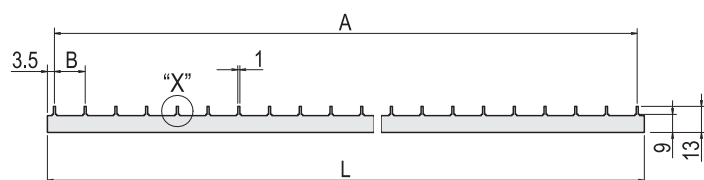


- Power distribution on printed circuit boards and backplanes
- Fault elimination
- Increases the stiffness of PCBs

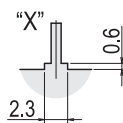
### Order Information

Width B HP	Length L mm	Dimension A mm	Part no.
3	220.3	$14 \times 15.24 = 213.36$	<b>30925-001</b>
3	342.3	$22 \times 15.24 = 335.28$	<b>30925-002</b>
4	210.2	$10 \times 20.32 = 203.2$	<b>30925-003</b>
4	332.1	$16 \times 20.32 = 325.12$	<b>30925-004</b>
5	210.2	$8 \times 25.4 = 203.2$	<b>30925-005</b>
5	337.2	$13 \times 25.4 = 330.2$	<b>30925-006</b>

Delivery is exclusively in Standard Pack Quantity (SPQ): Please order at least 10 pieces or a multiple. Pricing is per individual item.



00892008



A41743

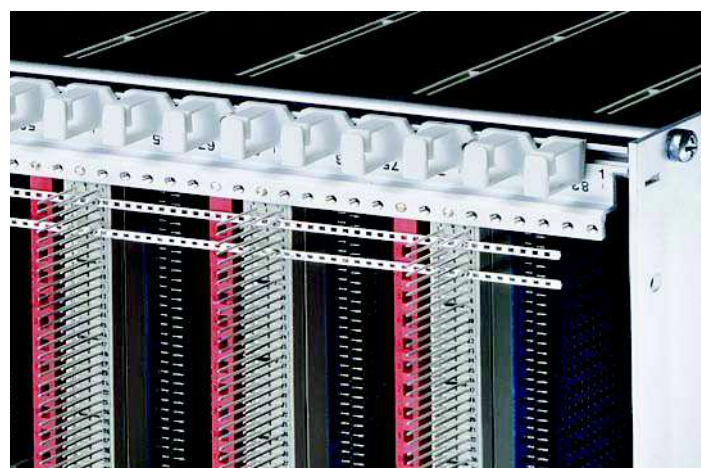
### Technical data

Conductor material	E-Cu, tin-plated
Pin dimensions	0.8 x 1.0 mm
Max. operating current	30 A
DC resistance	2.5 mΩ/m

### Note

- Special designs available on request

### Solder strip conductor



00892016

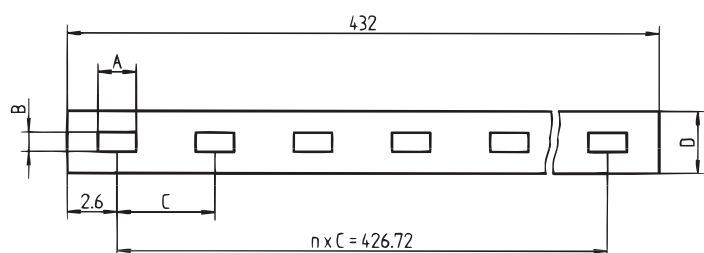
- Efficient linking of connections in the same grid and with the same potential
- Also suitable for EN 60603 (DIN 41612) connectors with wire-wrap pin

### Order Information

Connection type	A mm	B mm	C mm	D mm	n	Qty/PU	Part no.
Wire-wrap pins 0.6 x 0.6 mm	1.14	0.9	2.54	2.3	168	1	<b>60800-064</b>
Wire-wrap pins 1.0 x 1.0 mm	1.65	1.4	5.08	3.2	84	1	<b>60800-080</b>

### Technical data

Conductor material	E-Cu F30, tin-plated
Max. operating current wire-wrap pins 0.6 x 0.6 mm	≤ 4 A
Max. operating current wire-wrap pins 1.0 x 1.0 mm	≤ 4 A



AZA42390