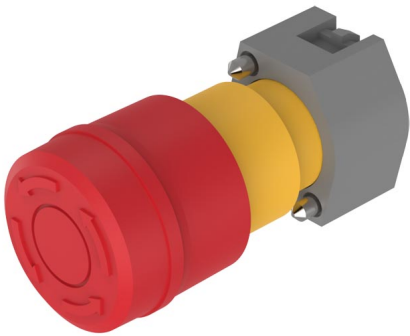


# EAO – Your Expert Partner for Human Machine Interfaces

## 704.064.2A - Emergency-stop switch actuator, foolproof EN IEC 60947-5-5

### 704.064.2A - Emergency-stop switch actuator, foolproof EN IEC 60947-5-5



*Attention: The preview is based on a sample product. This can differ from your current configuration.*

#### Mounting

Mounting cut-out  
Design Ø 22.5 mm  
raised

#### Front

Front shape round  
Front dimension Ø 37 mm

#### Other Attributes

Marking Arrows  
Weight 0.300 kg

#### Operating-/Indication part

Lens material Plastic  
Lens optics opaque  
Lens profile Mushroom  
Lens colour red  
Lens illumination non-illuminative

#### IP-Rating

Front protection IP65

#### Actuator

Switching action Maintained  
Housing colour yellow  
Housing material Plastic

#### Switching element

max. number of switching elements 2

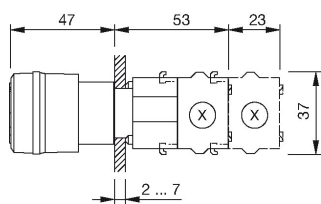
#### Function

Emergency stop switch

# EAO – Your Expert Partner for Human Machine Interfaces

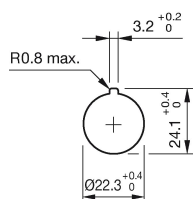
704.064.2A - Emergency-stop switch actuator, foolproof EN IEC 60947-5-5

## Dimensions

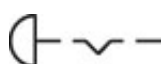


X = Screw terminal

## Mounting cut-outs



## Wiring diagram



## Additional information

Shaft yellow  
Twist to unlock anti-clockwise  
Max. 2 slow-make elements can be clipped on  
Application as per DIN EN ISO 13850 and EN 60204-1

## Legend

Switching action: C = Maintained