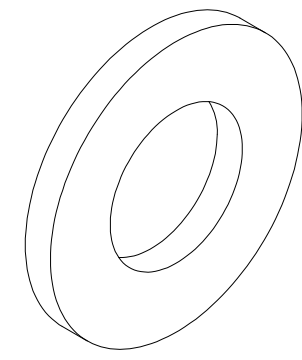
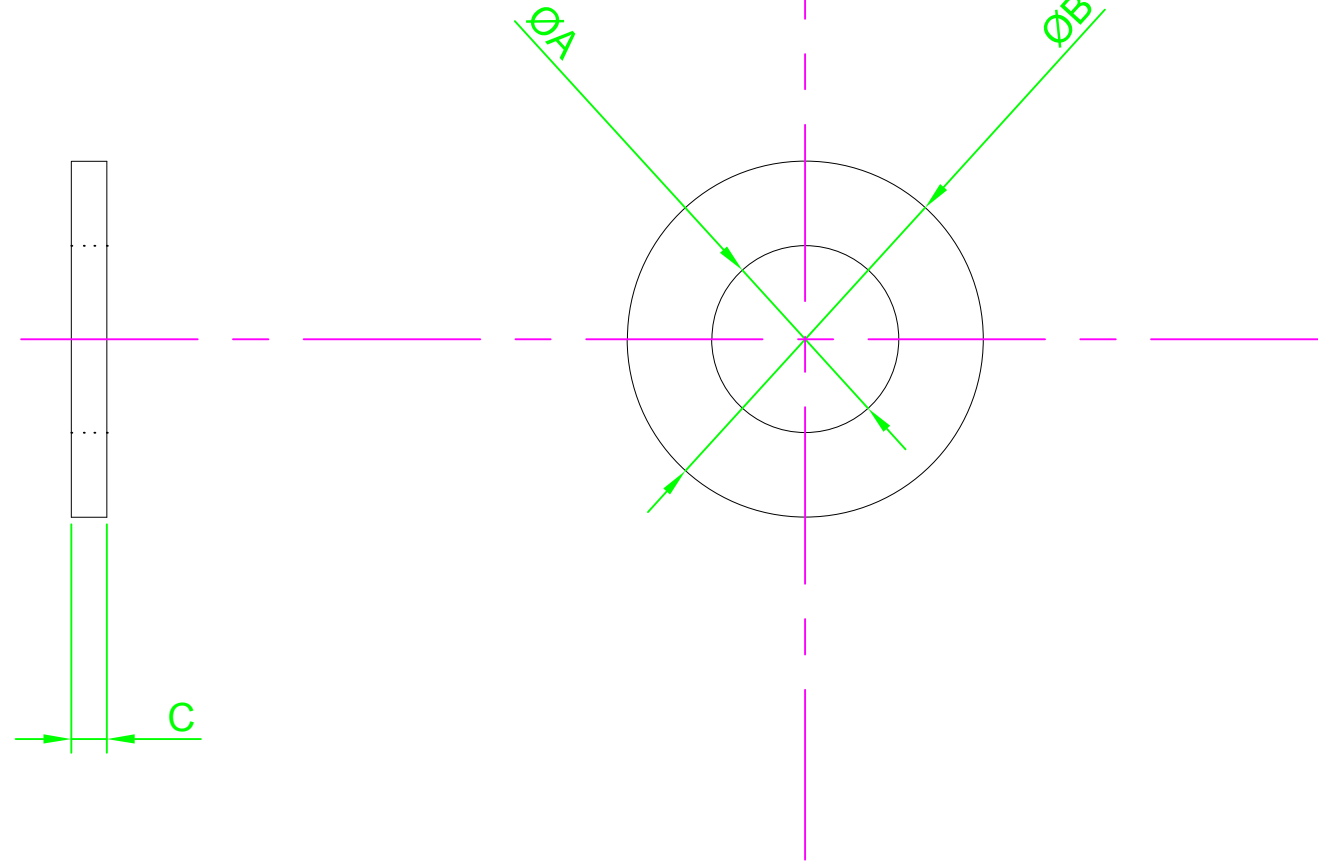


DO NOT SCALE DRAWING

REVISION

A INITIAL DRAWING 12.01.16

A
B
C
D
E
F



Part Number	ØA Nom	ØB Nom	C Nom
DM2 - FASTWA - Z100	2.2	5.0	0.3
DM2.5 - FASTWA - Z100	2.7	6.0	0.5
DM3 - FASTWA - Z100	3.2	7.0	0.5
DM3.5 - FASTWA - Z100	3.7	8.0	0.5
DM4 - FASTWA - Z100	4.3	9.0	0.8
DM5 - FASTWA - Z100	5.3	10.0	1.0
DM6 - FASTWA - Z100	6.4	12.0	1.6
DM8 - FASTWA - Z100	8.4	16.0	1.6
DM10 - FASTWA - Z100	10.5	20.0	2.0
DM12 - FASTWA - Z50	13.0	24.0	2.5

NOTES:



DESIGN RIGHT. TR FASTENINGS LTD, 2003
UNDER NO CIRCUMSTANCES MUST THIS
DRAWING BE COPIED OR DISCLOSED
WITHOUT FIRST OBTAINING WRITTEN
AUTHORITY.

UNLESS OTHERWISE SPECIFIED:
DIMENSIONS ARE IN MM (MILLIMETERS).
SURFACE FINISH:
TOLERANCES: DIN 125

	NAME	DATE
DRAWN	Darryl Wilson	12.01.16
CHK'D		
APPVD		

MATERIAL:
STEEL

HEAT TREATMENT:
N/A

FINISH:
TC1 - Commercial Zinc/Clear Trivalent

TITLE:
Plain Washer DIN 125A

DRAWING NUMBER:
TR32DFASTWA-Z

A4

