

RJS1N1LP/ Ultra Short Metal Button



■ Features

- 12/16/19/22/25mm
- IP67/IP68/IK10
- LED
- $\leq 0.5\text{mm}$ Microtravel

IEC60947-5-1 GB14048.5
Conform to IEC60947-5-1 GB14048.5 Standard

Technical Parameter

Degree of Protection	IP67/IP68
Contact Type	1 NO
Rated Voltage	DC36V
Rated Current	2A
Minimum Applicable Load	3V AC/DC, 1mA
Contact material	Silver plated
Operating Temperature	-25° to +55°C
Operating Humidity	45 to 85% RH
Contact Resistance	$\leq 50\text{m}\Omega$
Insulation Resistance	$\leq 50\text{m}\Omega$
Vibration Resistance	10 to 55Hz, amplitude 1.2mm p-p
Degree of Protection	>10g
Electrical Life	200,000 operations minimum (at full rated load)
Mechanical Life	1,000,000 operations minimum
Dielectrical Life	Switch Unit: 2,000V AC, 1 min. between live/dead part and terminals of different poles; 1,000V AC, 1 minute between terminals of the same pole; 1,500V AC, 1 minute between contact and lamp terminals. Illumination Unit: 2,000V AC, 1 min. between live part/ground
Connection Form	Foot welding
Soldering Temperature	20W/5 seconds or 260°C/3 seconds
Tightening Torque	5-14N.m
Action Stroke	$\leq 0.5\text{mm}$
Action Force	$\leq 3\text{N}$



Ultra Short Metal Button



Pushbutton Select Code

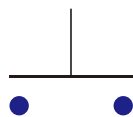
RJS1N1LP	—					—		
↓	↓	↓	↓	↓	↓	↓	↓	↓
Install Size	Action Style:	Shape of Top:	Contact Type:	Install Style:	Color:	Voltage:	Material:	
12mm 16mm 19mm 22mm 25mm	Microtravel (Momentary)	NO LED Ring Illumated	1NO (SPST)	Screw Type PCB Type	R Red G Green B Blue W White Y Yellow O Orange	24VDC 12VDC 5V/6.3VDC 3VDC	Stainless steel Black Anodised Alu	

Lamp Ratings

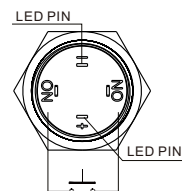
Lamp Type	LED lamp(DC)
Rated Voltage	3V,6V,12V,24V
Rated Current	About 15mA About 2mA
LED Color	R G Y O B W
Life	50000 hours(Reference)
Lamp Circuit diagram	<p>Built in resistors; use 0603 patch beads.</p>
Power	0.06W
Chromogenic index	60-70
Luminous flux	80-100mcd(lm)
Forward voltage	2.0-3.2V
Reverse voltage	3V
(ESD) Electrostatic breakdown voltage	3000V
Rated current	0.006A
Lighting angle	120°
Luminous efficiency	110(lm/W)
thermal resistance	≤50°C/W
Maximum allowable junction temperature	120°C
Ageing time	1000 hours of conventional aging 100%; 6000 hours conventional aging 98%

Ultra short button

Contact Diagram



Contact Style








Terminal Description

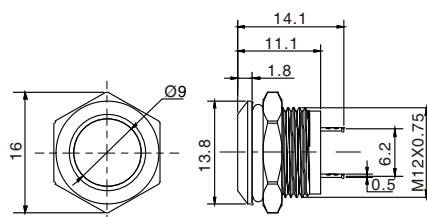
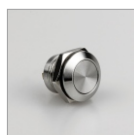
RJS1N1LP



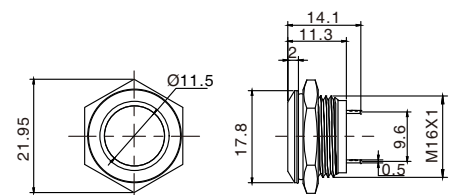
RJS / Ultra short metal button

Product appearance	Illuminated type	Operation	Contact	Model	Crust Material
Chamfer edge flat face 	No LED	<0.5mm Microtravel	1NO	RJS1N1LP-12M	Stainless Steel Black Anodised Alu
Chamfer edge flat face 	No LED	<0.5mm Microtravel	1NO	RJS1N1LP-16M	
Chamfer edge flat face 	No LED	<0.5mm Microtravel	1NO	RJS1N1LP-19M	
Chamfer edge flat face 	No LED	<0.5mm Microtravel	1NO	RJS1N1LP-22M	
Chamfer edge flat face 	No LED	<0.5mm Microtravel	1NO	RJS1N1LP-25M	

RJS1N1LP-12M



RJS1N1LP-16M

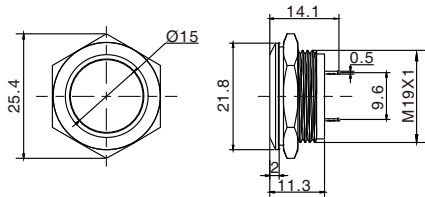


Ultra Short Metal Button

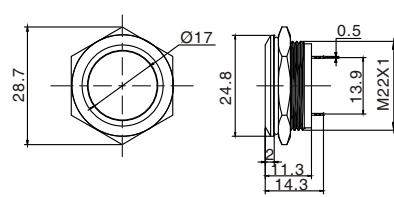


Metal Signal Lamp

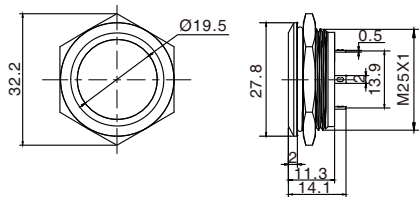
RJS1N1LP-19M



RJS1N1LP-22M









RJS1N1LP-25M



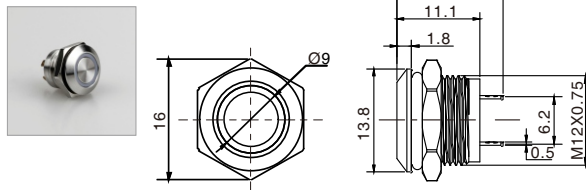
Ultra short metal button with lamp

Ultra short button

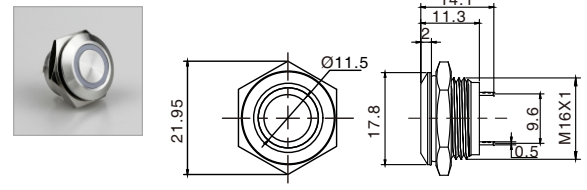
Product appearance	Install Style	Operation	Contact	Model	Color	Rated Voltage	Crust Material
	PCB Type	<0.5mm Microtravel	1NO	RJS1N1LP-12M	<ul style="list-style-type: none"> R Red G Green Y Yellow W White B Blue O Orange 	24VDC 12VDC 6.3VDC 110VAC 220VAC	Stainless Steel Black Anodised Alu
	PCB Type	<0.5mm Microtravel	1NO	RJS1N1LP-16M			
	PCB Type	<0.5mm Microtravel	1NO	RJS1N1LP-19M			
	Screw Type	<0.5mm Microtravel	1NO	RJS1N1S-19M			

Product appearance	Install Style	Operation	Contact	Model	Color	Rated Voltage	Crust Material
Chamfer edge flat face 	PCB Type	<0.5mm Microtravel	1NO	RJS1N1LP-22M	<ul style="list-style-type: none"> ■ Red ■ Green ■ Yellow W White ■ Blue ■ Orange 	24VDC 12VDC 6.3VDC 110VAC 220VAC	Stainless Steel Black Anodised Alu
Chamfer edge flat face 	PCB Type	<0.5mm Microtravel	1NO	RJS1N1LP-25M			

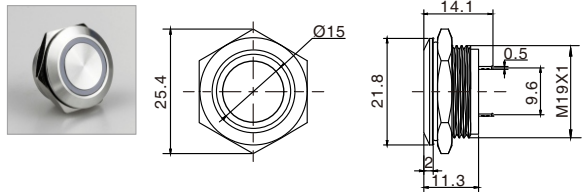
RJS1N1LP-12M



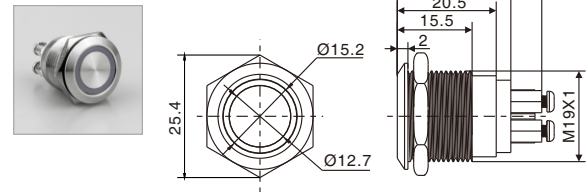
RJS1N1LP-16M



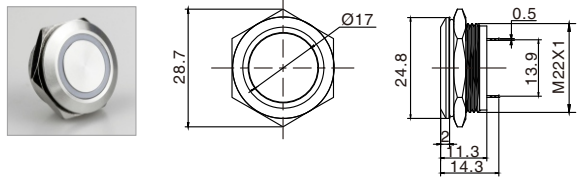
RJS1N1LP-19M



RJS1N1S-19M



RJS1N1LP-22M



RJS1N1LP-25M

