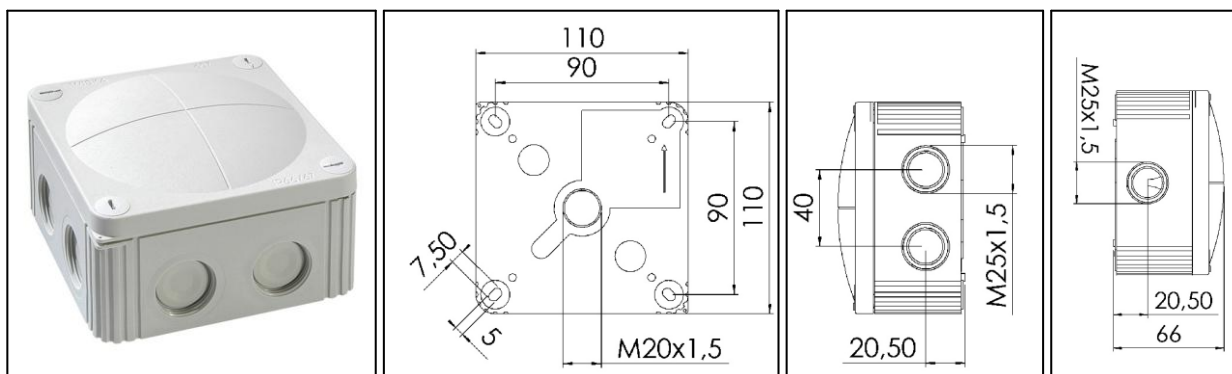






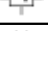


WISKA COMBI 607



- Protection class to EN 60 529:** IP 66 / 67
Flame protection: Glow wire test 750° C acc. to EN 60695-2-11
Temperatures during installation: -5°C to 60°C
Temperature range of material: -30°C to 100°C, intermittent up to approx. 120°C
Voltage: 690 V
Material: Polypropylene, reinforced glass fibre; sealing: thermoplastic elastomere
Terminals/poles: 6 mm²
Fixing: 4 internal openings outside of the sealing area
Equipment: Elastic self-sealing membranes for cable entry without mechanical devices: 7 inlets at the side and 3 inlets in the base
 - 7 integrated M 25 threads, no locknuts necessary
 - 4 captive quick-release lid screws
 - Colour RAL 7035 light grey
 - .../S = black
 - .../W = white
- Accessories:**
 - DIN RAIL KIT 607: Rail TS 35 + Fixing material, WISKA-No. 10060361
 - EC 607 Earthing plate: WISKA No. 10101474

Type	WISKA-No.		 mm		L x B x H external / open mm
COMBI 607/5	10060532	3/27	3 - 17		110 x 110 x 66
COMBI 607/5/S	10060538	3/27	3 - 17		110 x 110 x 66
COMBI 607/5/W	10060534	3/27	3 - 17		110 x 110 x 66
DIN RAIL KIT 607	10060361	1			-