



Part Number : [14600061](#)

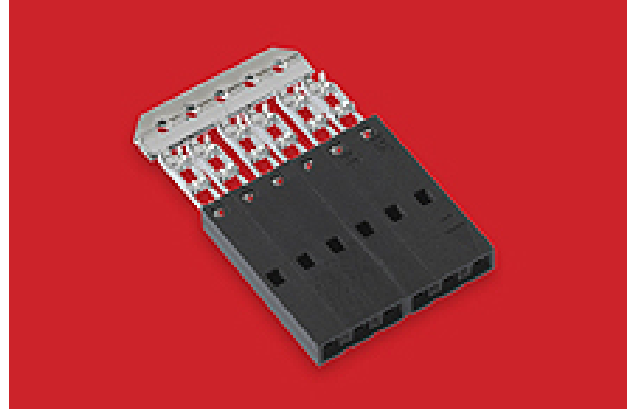
Product Description : 2.54mm Pitch SL Insulation Displacement Connector Assembly, Female, Single Row, Version A, Non-polarized, Wire Size 24 AWG, 3.81 µm Tin/Lead (SnPb), 6 Circuits

Series Number : 70400

Status : Active

Product Category : Connector Housings

Engineering Number : 70400-0005



Documents & Resources

Drawings

[Drawing_014600061_sd.pdf](#)


[Packaging Design Drawing_PK-70873-0001-001.pdf](#)

3D Models and Design Files

[3D Model_014600061_stp.zip](#)

Product Environment Compliance

Compliance

GADSL/IMDS	Not Relevant
China RoHS	
EU ELV	Not Relevant
Low-Halogen Status	Not Reviewed per IEC 61249-2-21
REACH SVHC	Not Contained per D(2023)3788-DC (14 Jun 2023)
EU RoHS	Compliant per EU 2015/863

Multiple Part Product Compliance Statements

- Eu RoHS
- REACH SVHC
- Low-Halogen

Multiple Part Industry Compliance Documents

- IPC 1752A Class C
- IPC 1752A Class D

- Molex Product Compliance Declaration
- IEC-62474
- chemSHERPA (xml)

EU RoHS Certificate of Compliance

Part Details

General

Status	Active
Category	Connector Housings
Series	70400
Description	2.54mm Pitch SL Insulation Displacement Connector Assembly, Female, Single Row, Version D, Back Ribs, Wire Size 26 AWG, 3.81µm Tin/Lead (SnPb), 5 Circuits
Comments	Terminals Preloaded
Component Type	Housing
Product Family	SL Modular Connectors
Product Name	SL
UPC	800753992276

Agency

CSA	LR19980
UL	E29179

Electrical

Current - Maximum per Contact	1.8A
Voltage - Maximum	250V

Physical

Circuits (Loaded)	5
Color - Resin	Black
Durability (mating cycles max)	25
Entry Angle	Vertical
Flammability	94V-0
Gender	Female

Glow-Wire Capable	No
Lock to Mating Part	None
Material - Metal	Phosphor Bronze
Material - Plating Mating	Tin
Material - Plating Termination	Tin
Material - Resin	Polyester Alloy
Net Weight	0.457/g
Number of Rows	1
Packaging Type	Tube
PCB Retention	None
Pitch - Mating Interface	2.54mm
Plating min - Mating	3.810µm
Plating min - Termination	1.905µm
Polarized to Mating Part	Yes
Stackable	Yes
Temperature Range - Operating	-40° to +105°C
Termination Interface Style	IDT or Pierce
Wire/Cable Type	Discrete Wire, Ribbon Cable
Wire Insulation Diameter	1.35mm max.
Wire Size (AWG)	26

Mates With / Use With

Mates with Part(s)

Description	Part Number
2.54mm SL Interim Clips	<u>70013</u>

Application Tooling

Global

Description	Part Number
Ribbon Cable Tool Kit, Press Not Included	<u>0622016600</u>