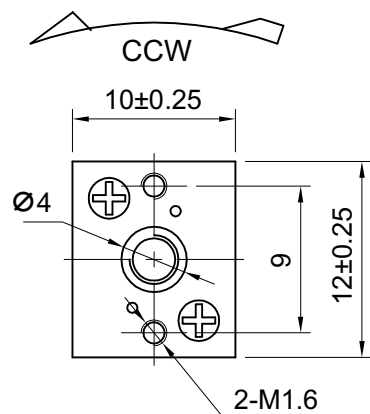


Engine with gearbox G53M and M3 shaft

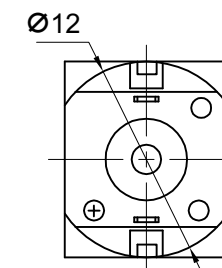
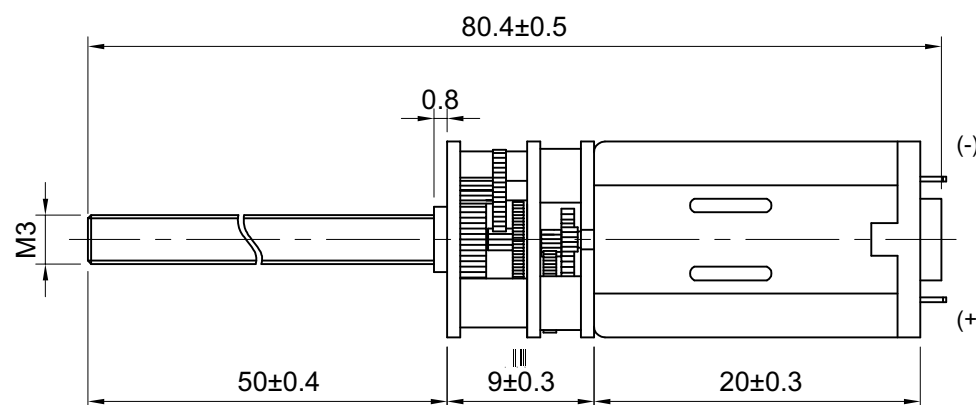
## G53M

Conrad No. 1676731

DIRECTIO



Shaft End Play: 0.05-0.5mm



WEIGHT:13 5g(APPROX)

TESTING  
CONDITIONS

1. AT RATED VOLTAGE: 12VDC  
(OPERATING RANGE: 6~12VDC)
2. AT 25±5°C TEMPERATURE AND 60±20% HUMIDITY  
(OPERATION RANGE: -10 °C~+60 °C)
3. INSPECTION AFTER 30 SECONDS RUNNING

NO LOAD

1. NO LOAD CURRENT: 0.025A max
2. NO LOAD SPEED: 300±10%rpm

ON LOAD

1. ON LOAD TORQUE: 0.14kg.cm
2. ON LOAD CURRENT: 0.1A max
3. ON LOAD SPEED: 240±10%rpm

AT STALL

(EXTRAPOLATED)

1. STALL CURRENT: 0.3A max

Notes:

1. Please do the Soldering work in 2 seconds with the soldering-iron Tip at 340~400°C.
2. Do not shock or drop the motor onto ground during mounting process
3. It is necessary to be careful that any adhesive or glue shall not spread into gearbox shaft along the shaft.

	Date	Company	Product
Processed	11.01.18	SOL-EXPERT	Engine with gearbox G53M and M3 shaft
Checked			
Art.no.	96442		
EAN	4037373964420		
Revision: 01 (11.01.2018)			Sheet 1