

AS-i-Master

Suitable for SAP4, SAP5, A²SI and ASI4U

For programming, developing and tests of AS-i Slaves

AS-i specification 3.0



Article no. BWU1728 with Master RS 232

The AS-i Function and EMC-Test Master with RS 232 interface can be operated in 3 different modes:

1. As a standard AS-i Master according to specification 3.0.
2. As a tool for programming of the AS-i Slave ICs SAP4, SAP5, A²SI and ASI4U. This can be done with the help of Windows programs.

3. As a means to perform function and EMC tests which are necessary for every development of an AS-i slave (EMC test mode).

The AS-i Function and EMC-Test Master is used among others for the AS-i certification in Leipzig for release and test of AS-i Slaves.

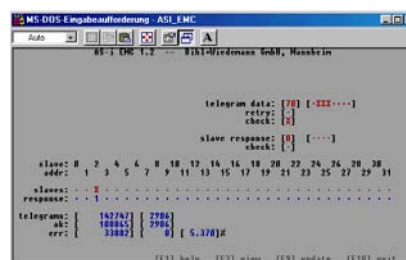
| Graphical display | Art. no. BWU1728 |
|---|--|
| Operating current | Master power supply approx. 200 mA out of AS-i circuit |
| Operating voltage | AS-i voltage 30 V DC |
| Baud rates | 19200 Baud |
| Serial interface | RS 232 |
| AS-i cycle time | 150 µs*(number of slaves + 2) |
| Displays | |
| LCD | displaying slave addresses, error messages |
| LED green (power) | power on |
| LED green (ser active) | serial interface active |
| LED red (config error) | configuration error |
| LED green (U AS-i) | AS-i voltage OK |
| LED green (AS-i active) | AS-i normal operation active |
| LED green (prg enable) | automatic address programming enabled |
| LED yellow (prj mode) | the master in configuration mode |
| Buttons | 4 |
| Voltage of insulation | ≥ 500 V |
| EMC directions | EN 61000-6-2, EN 61000-6-4 |
| Ambient operating temperature | 0°C ... +55°C |
| Storage temperature | -25°C ... +85°C |
| Housing | AS-i master housing in stainless steel |
| Dimensions (L, W, H) | 120 mm, 75 mm, 83 mm |
| Protection category (DIN 40050) | IP20 |
| Tolerable loading referring to impacts and vibrations | according to EN 61 131-2 |
| Weight | 460 g |

The EMC-Test Mode

It is possible to put the Master into a state that is not AS-i compliant. This option can be useful for specific tests on AS-i under laboratory conditions (e. g. tests with bursts on the lines or tests with very long wires).

By putting the AS-i Master into the EMC Test Mode it becomes an AS-i test set-up for experts. In the test mode, the list of addressed slaves and the telegrams for contacting these slaves are given by the host. Also, it is possible to decide from within the host whether faulty answered telegrams from the AS-i Master may be repeated or not (Note: in regular AS-i operation, data telegrams can be repeated one time). As above, there are two error counters. However, in this mode the first one counts all telegrams while the second counts all faulty telegrams.

The **AS-i_EMG.EXE** program is designed for the operation of the AS-i Master in the EMC test mode. This program is also delivered as program for Windows.



Individual software:

It is, of course, possible to operate the AS-i Master from other hosts with individual software. The necessary telegrams are described in the manual.

Scope of delivery:

- The AS-i Function and EMC-Test Master with RS 232, power supply A
- Windows program **AS-i_EMG.EXE** for EMV test mode
- Windows programs for programming of SAP4, SAP5, A²SI and ASI4U
- Software AS-i Control Tools with serial cable for AS-i master in stainless steel (art. no. BW1602)

A DLL-driver for the programming of the A²SI- and SAP4-ASIC can be ordered separately on request (art. no. BW1356)