



**Model Number**

**NBN3-F25-E9-V1**

**Features**

- Satisfies machinery directive

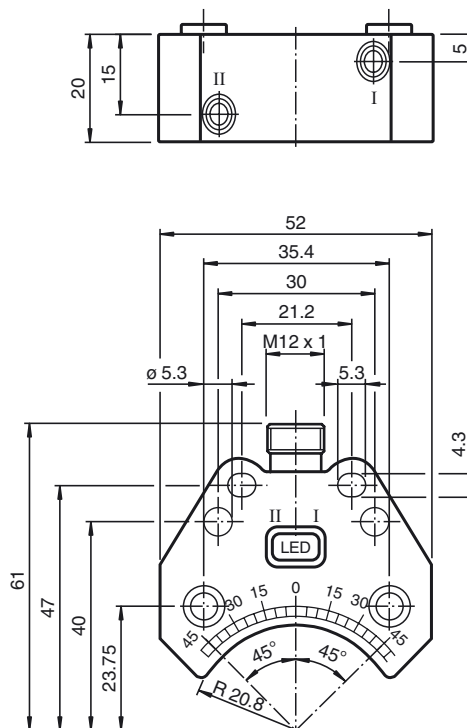
**Accessories**

- V1-W-2M-PUR**  
Female cordset, M12, 4-pin, PUR cable
- V1-G**  
Female connector, M12, 4-pin, field attachable
- V1-W**  
Female connector, M12, 4-pin, field attachable
- V1-G-2M-PUR**  
Female cordset, M12, 4-pin, PUR cable

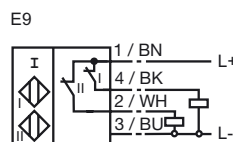
**Technical Data**

General specifications			
Switching element function		PNP	Dual NC
Rated operating distance	$s_n$	3 mm	
Installation		flush mountable	
Output polarity		DC	
Assured operating distance	$s_a$	0 ... 2.43 mm	
Reduction factor $r_{Al}$		0.5	
Reduction factor $r_{Cu}$		0.4	
Reduction factor $r_{304}$		1	
Reduction factor $r_{S37}$		1.1	
Nominal ratings			
Operating voltage	$U_B$	10 ... 30 V	
Switching frequency	$f$	0 ... 500 Hz	
Hysteresis	$H$	typ. 5 %	
Reverse polarity protection		all connections	
Short-circuit protection		pulsing	
Voltage drop	$U_d$	$\leq 3$ V	
Operating current	$I_L$	0 ... 200 mA	
Off-state current	$I_r$	0 ... 0.5 mA typ. 0.1 $\mu$ A at 25 °C	
No-load supply current	$I_0$	$\leq 35$ mA	
Time delay before availability	$t_v$	$\leq 500$ ms	
Operating voltage indicator		LED, green	
Switching state indicator		LED, yellow	
Ambient conditions			
Ambient temperature		-25 ... 70 °C (-13 ... 158 °F)	
Storage temperature		-40 ... 85 °C (-40 ... 185 °F)	
Mechanical specifications			
Connection type		Connector M12 x 1, 4-pin	
Housing material		PBT	
Sensing face		PBT	
Degree of protection		IP67	
Tightening torque, fastening screws		M5 x 25 : 2.7 Nm	
Compliance with standards and directives			
Standard conformity		EN 60947-5-2:2007 IEC 60947-5-2:2007	
Approvals and certificates			
UL approval		cULus Listed, General Purpose	
CSA approval		cCSAus Listed, General Purpose	
CCC approval		CCC approval / marking not required for products rated $\leq 36$ V	

**Dimensions**



**Electrical Connection**



Release date: 2014-09-08 13:50 Date of issue: 2014-09-08 086674\_eng.xml

Pinout



Wire colors in accordance with EN 60947-5-2

1		BN	(brown)
2		WH	(white)
3		BU	(blue)
4		BK	(black)