



LV HRC FUSE LINK GL/GG WITH NON-INSULATED GRIP LUGS WITH FRONT INDICATOR SIZE 3, 250A, AC 690V/DC 440V

Model		
product brand name		SENTRON
Product designation		LV HRC fuse link
Design of an identification indicator		Front indicators
Design of the switching contact		Non-corroding, silver-plated
Design of the fuse link		LV HRC fuse link
General technical data		
Size of fuse system / acc. to DIN EN 60269-1		NH3
Operating class of the fuse link		gG
circuit-breaker / Design		3NA3
Mounting type		Non-insulated grip lugs
Protection class		
Protection class IP		IP20, with connected conductors
Switching capacity		
Switching capacity current		
<ul style="list-style-type: none"> for DC / acc. to IEC 60947-2 / Rated value 	kA	25
<ul style="list-style-type: none"> acc. to IEC 60947-2 / Rated value 	kA	120
Dissipation		
Active power loss		
<ul style="list-style-type: none"> for rated value of the current / with AC / in hot operating state / per pole 	W	23
Electricity		
rated current I _n / IEC, DIN/VDE / at 40 Cel	A	237.5

Current / with AC / Rated value	A	250
---------------------------------	---	-----

Mechanical Design



mounting position	Any, preferably vertical
-------------------	--------------------------

Environmental conditions

Ambient temperature		
• minimum	°C	-5
• maximum	°C	40
• during storage / Note		Air humidity 90% at 20 °C

Certificates

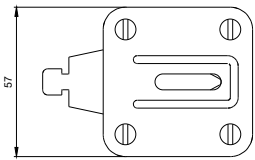
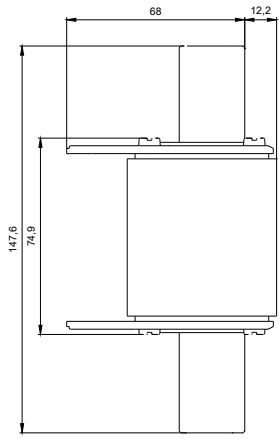
Equipment marking		
• acc. to DIN EN 61346-2		F
• acc. to DIN EN 81346-2		F

General Product Approval	Declaration of Conformity	Test Certificates
 CCC  GOST  VDE  EAC  EG-Konf.		Special Test Certificate

Test Certificates	other
Type Test Certificates/Test Report	other Environmental Confirmations other

Further information

- Information- and Downloadcenter (Catalogs, Brochures,...)**
<http://www.siemens.com/lowvoltage/catalogs>
- Industry Mall (Online ordering system)**
<https://eb.automation.siemens.com/mall/en/WW/Catalog/Product/3NA33446>
- Service&Support (Manuals, Certificates, Characteristics, FAQs,...)**
<http://support.automation.siemens.com/WW/view/en/3NA33446/all>
- Image database (product images, 2D dimension drawings, 3D models, device circuit diagrams, ...)**
http://www.automation.siemens.com/bilddb/cax_en.aspx?mlfb=3NA33446
- CAX-Online-Generator**
<http://www.siemens.com/cax>
- Tender specifications**
<http://ausschreibungstexte.siemens.com/tiplv>



last modified:

11.03.2015