

- 1
- 2
- 3
- 4
- 5
- 6
- 7
- 8
- 9
- 10
- 11
- 12
- 13
- 14
- 15
- 16
- 17
- 18

MATERIAL

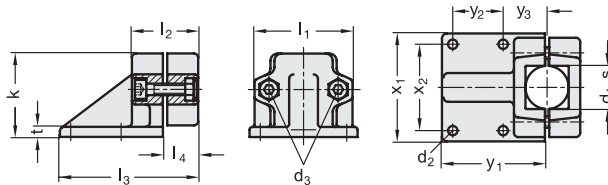
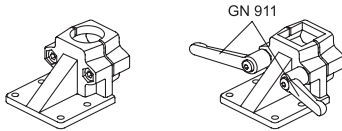
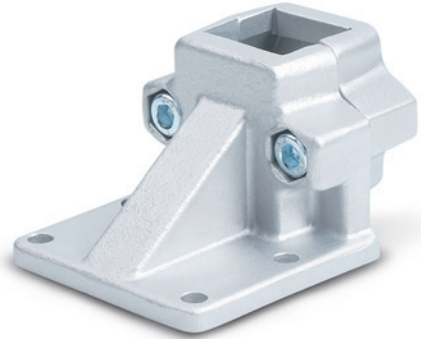
Aluminium, matte finish.
AISI 304 stainless steel screws and nuts.

STANDARD EXECUTIONS

- **GN 166-BL**: natural aluminium.
- **GN 166-SW**: aluminium, epoxy resin coating, RAL 9005 black colour.

FEATURES AND APPLICATIONS

The assembly hole of GN 165 connecting clamps allows an excellent match with tubes GN 990 (see page 1778).
The clamping screws d₃ may be replaced by clamping kits GN 911 (see page 1782).



Code BL	Code SW	Description	d ₁ Hole	s Square hole	d ₂	d ₃	k	l ₁	l ₂	l ₃	l ₄	t	x ₁	x ₂	y ₁	y ₂	y ₃	d ₃ Clamping kit	⚖
GN.49611	GN.49616	GN 166-B20-2-*	20	-	7	M8	58	69	46	96	23	7	75	60	72	35	30	GN 911-M8-40	297
GN.49631	GN.49636	GN 166-B25-2-*	25	-	7	M8	58	69	46	96	23	7	75	60	72	35	30	GN 911-M8-40	291
GN.49651	GN.49656	GN 166-B30-2-*	30	-	7	M8	58	69	46	96	23	7	75	60	72	35	30	GN 911-M8-40	286
GN.49671	GN.49676	GN 166-B40-2-*	40	-	11	M10	91	98	70	145	35	14	115	90	108	50	45	GN 911-M10-63	870
GN.49691	GN.49696	GN 166-B42-2-*	42	-	11	M10	91	98	70	145	35	14	115	90	108	50	45	GN 911-M10-63	850
GN.49711	GN.49716	GN 166-B45-2-*	45	-	11	M10	91	98	70	145	35	14	115	90	108	50	45	GN 911-M10-63	840
GN.49731	GN.49736	GN 166-B48-2-*	48	-	11	M10	91	98	70	145	35	14	115	90	108	50	45	GN 911-M10-63	830
GN.49751	GN.49756	GN 166-B50-2-*	50	-	11	M10	91	98	70	145	35	14	115	90	108	50	45	GN 911-M10-63	815
GN.49811	GN.49816	GN 166-V20-2-*	-	20x20	7	M8	58	69	46	96	23	7	75	60	72	35	30	GN 911-M8-40	290
GN.49831	GN.49836	GN 166-V25-2-*	-	25x25	7	M8	58	69	46	96	23	7	75	60	72	35	30	GN 911-M8-40	280
GN.49851	GN.49856	GN 166-V30-2-*	-	30x30	7	M8	58	69	46	96	23	7	75	60	72	35	30	GN 911-M8-40	270
GN.49871	GN.49876	GN 166-V40-2-*	-	40x40	11	M10	91	98	70	145	35	14	115	90	108	50	45	GN 911-M10-63	900
GN.49891	GN.49896	GN 166-V45-2-*	-	45x45	11	M10	91	98	70	145	35	14	115	90	108	50	45	GN 911-M10-63	815
GN.49911	GN.49916	GN 166-V50-2-*	-	50x50	11	M10	91	98	70	145	35	14	115	90	108	50	45	GN 911-M10-63	776

* Complete the description of the standard item needed by adding the finish of the connector clamps: BL (blank) or SW (black).