



TECHNICAL
OVERVIEW

PathWave BenchVue Software

Control. Automate. Simplify.

PATHWAVE



Find us at www.keysight.com

Simplified Measurement Viewing, Control and Capture

Keysight's PathWave BenchVue software for the PC eliminates many of the issues around bench testing. By making it simple to connect, control instruments, and automate test sequences you can quickly move past the test development phase and access results faster than ever before. Dedicated instrument apps allow you to quickly configure the most commonly used measurements and setups for each instrument family. With the Test Flow¹ enabled apps help you drastically shorten your development of automated programs and further streamline your workflow.

Use PathWave BenchVue Apps to:

- Configure the most commonly used controls and measurements from instruments
- Visualize multiple measurements simultaneously
- Easily log and export data and images in a few clicks for faster analysis
- Quickly create automated test sequences with minimal instrument knowledge¹
- Access deeper instrument controls and solutions¹

Save time by:

- Analyzing results within BenchVue or with built-in data exports
- Learning software quickly with common look and feel apps
- Utilizing multiple instrument apps in one easy to use software platform

Plug and Play Instrument Control

Connecting and controlling an instrument to BenchVue is as simple as plugging it in and launching the BenchVue instrument application. No programming or separate instrument drivers required. BenchVue will automatically detect GPIB, USB and LAN instrument connections.



1. Available only on pre 2021 versions.

BenchVue Apps

Keysight's BenchVue software platform provides access to a wide array of instrument control, automation and analysis apps with different capabilities to enhance your productivity. These capabilities vary based on the functionality of the types of instruments, apps, and models that are connected to your PC running BenchVue software.

All instrument control apps such as BenchVue Fieldfox Handheld Analyzer apps allow you to easily control and build custom automated sequences using BenchVue Test Flow¹.

Technology-specific apps such as Solar Array Simulation software are dedicated apps for a specialized type of application or industry.

Lab management apps provide centralized lab instrument configuration, ability to track assets, and more lab administration features.



Important note: Keysight's BenchVue software apps are always ensured to provide the best user experience and functionality to enhance your productivity. The new Pathwave BenchVue Digital Multimeter, BenchVue Function Generator, BenchVue Power Supply and BenchVue Oscilloscope apps will run as a standalone application and supports all new and some existing² instrument models.



BenchVue Digital Multimeter



BenchVue Function Generator



BenchVue Power Supply



BenchVue Oscilloscope

1. Available only on pre 2021 versions.

2. For the most current supported instrument list, visit: www.keysight.com/find/BenchVueInstruments

BenchVue apps and collections

- Complete Control Collection (BV9001B)
- Digital Multimeter (BV0001B) **NEW**
- Function Generator (BV0002B) **NEW**
- Power Supply (BV0003B) **NEW**
- Oscilloscope (BV0004B) **NEW**
- Data Acquisition (BV0006B)
- Power Meter (BV0007B)
- FieldFox Analyzer (BV0010B)
- Universal Counter (BV0011B)
- Electronic Load (BV0012B)
- Current Analyzer (BV0013B)
- LCR Meter (BV0014B)
- USB Modular Digital Multimeter App (BV0021B)
- USB Modular Function Generator App (BV0022B)
- USB Modular SMU App (BV0023B)
- USB Modular Oscilloscope App (BV0024B)
- USB Modular DAQ App (BV0025B)
- AC Source Control App (BV0026B) **NEW**
- AC Source Avionics Standard Test App (BV0028B) **NEW**
- USB Modular Chassis (N/A)¹
- USB Modular Switch Matrix (N/A)¹
- Lab Manager (BV0110B)
- Lab Client (BV0111B)
- Spectrum Analyzer (Available in BV9001B)
- Network Analyzer (Available in BV9001B)
- Signal Generator (Available in BV9001B)
- Power Analyzer (N/A)¹
- Education Control Collection (BV9111B)
- Solar Array Simulation (DG8901A)¹

For the latest applications with free 30-day trials, check out the BenchVue Apps tab within BenchVue or visit: www.keysight.com/find/benchvue_apps

Many instruments now include a BenchVue app license with a new purchase.
Visit: www.keysight.com/find/IncludedBenchVue for more information

1. The instrument-included version of these apps does not require a paid license.

BenchVue Complete Control Collection

Access a complete collection of all BenchVue instrument control, automation and analysis apps. Including exclusive access to the Network Analyzer, Spectrum Analyzer and Signal Generator apps.

Model: BV9001B



- | | |
|--------------------------|----------------------------------|
| Digital multimeter app | LCR meter app |
| Function generator app | USB digital multimeter app |
| Power supply app | USB function generator app |
| Oscilloscopes app | USB modular SMU app |
| Data acquisition app | USB modular oscilloscopes app |
| Power meters/sensors app | USB modular data acquisition app |
| FieldFox App | USB modular chassis app |
| Universal counter app | USB modular switch matrix app |
| Electronic load app | Spectrum analyzer app |
| Current analyzer app | Signal generator app |
| Serial control app | Network analyzer app |
| Lab client app | Benchlink waveform builder |

BenchVue Digital Multimeter Control App



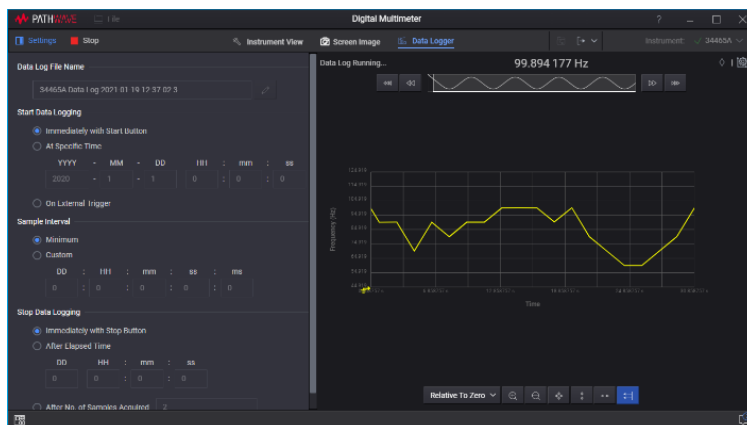
Model: BV0001B

Easily control your DMM and acquire log measurements for quick analysis.

- All new standalone application
- High resolution with newly designed user-friendly Interface

Supports the following models:

- 34401A
- 34405A
- 34410A
- 34411A
- 34420A¹
- 34450A¹
- 34460A¹
- 34461A¹
- 34465A¹
- 34470A¹
- EDU34450A¹



1. New Instrument purchases include a Node locked perpetual BenchVue app license

BenchVue Function Generator Control App



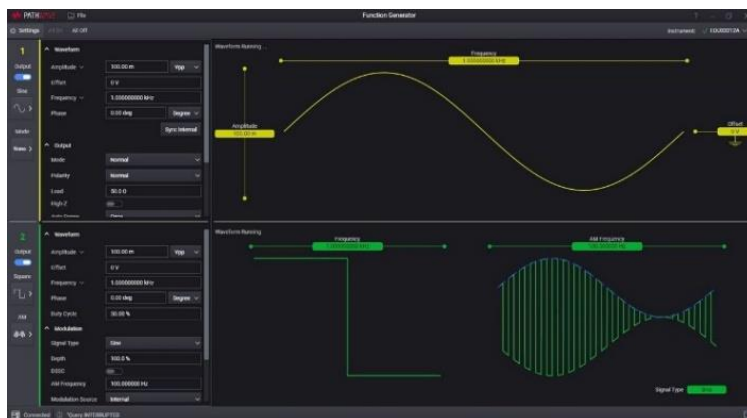
Model: BV0002B

Intuitively control your function generators and design custom waveforms.

- All new standalone application
- High resolution with newly designed user-friendly Interface

Supports the following models:

- 33600 Series¹ (4)
- 33509B¹, 33510B¹, 33519B¹, 33520B¹, 33511B¹, 33512B¹, 33521B¹, 33522B¹
- EDU33212A¹, EDU33211A¹



1. New Instrument purchases include a Node locked perpetual BenchVue app license

BenchVue Power Supply Control App



Model: BV0003B

Easily control your power supplies to set parameters.

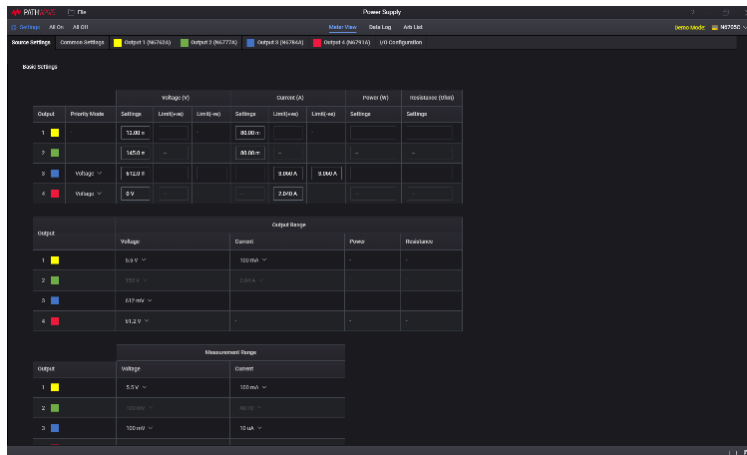
- All new standalone application
- High resolution with newly designed user-friendly Interface

Supports the following models:

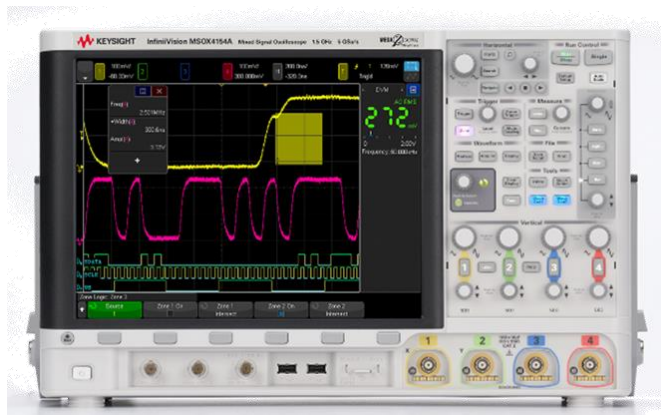
- B29xxA Series¹ (4)
- B2961A/62A¹
- E3600 Series¹ (14)
- E36100 Series¹ (10)
- E36200 Series¹ (4)
- E36300 Series¹ (3)
- N5700 Series¹ (24)
- N6700A/B/C¹, N6701A/C¹, N6702A/C¹, N6705A/B/C¹
- N6785A¹, N6786A¹
- N6900 Series¹ (12)
- N7900 Series¹ (12)
- N8700 Series¹ (21)
- N8900 Series¹ (36)
- RP7900 Series (6)

1. New Instrument purchases include a Node locked perpetual BenchVue app license

- B29xxB¹ (7)
- B2901BL¹, B2910BL¹
- N67xxA¹ (21)
- N67xxB¹ (12)
- RP7972A¹, RP7973A¹
- EDU36311A¹



BenchVue Oscilloscope Control App



Model: BV0004B

Conveniently control your oscilloscopes and quickly acquire log data for analysis.

- All new standalone application
- High resolution with newly designed user-friendly Interface

1. New Instrument purchases include a Node locked perpetual BenchVue app license

Supports the following models:

- 1000-X Series¹ (10)
- 2000-X Series¹ (12)
- 3000-X Series¹ (18)
- 3000T Series¹ (19)
- 4000-X Series¹ (16)
- 6000 Series (8)
- 7000 Series (14)
- 9000 Series (8)
- 90000 Series (6)
- 90000 X-Series (17)
- 90000 DSA Series (16)
- P924xA Series (3)
- S Series (14)
- V Series (18)
- Z Series (10)



1. New Instrument purchases include a Node locked perpetual BenchVue app license.

BenchVue Data Acquisition Control & Analysis App

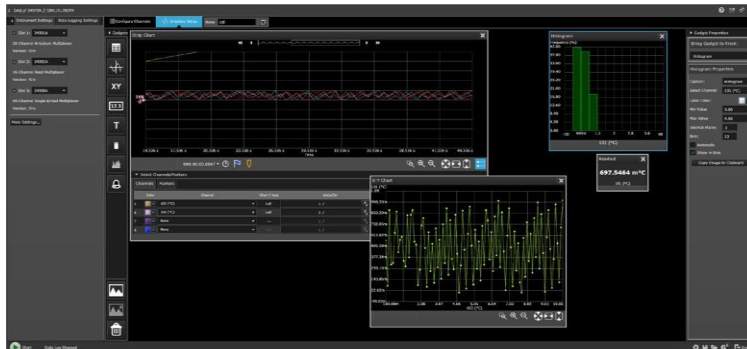


Model: BV0006B

Conveniently control your data acquisition units, easily visualize measurements and log data.

Supports the following models:

- 34970A¹
- 34972A¹
- 34980A¹
- DAQ970A¹
- DAQ973A¹



1. New Instrument purchases include a Node locked perpetual BenchVue app license

BenchVue Power Meter/Power Sensor Control & Analysis App



Model: BV0007B

Conveniently control your power meters and power sensors, analyze RF power measurements, and quickly log data.

Supports the following models:

- U2021XA¹, U2022XA¹
- U204x XA¹ (5)
- U205x XA¹ (4)
- U206x XA¹ (4)
- U2000 Series¹ (9)
- U2053/63 Series¹
- L2050/60 Series¹ (11)
- U848x Series¹ (5)
- N191xA¹ (4)
- N8262A¹



1. New Instrument purchases include a Node locked perpetual BenchVue app license

BenchVue FieldFox Handheld Analyzer Control & Automation App

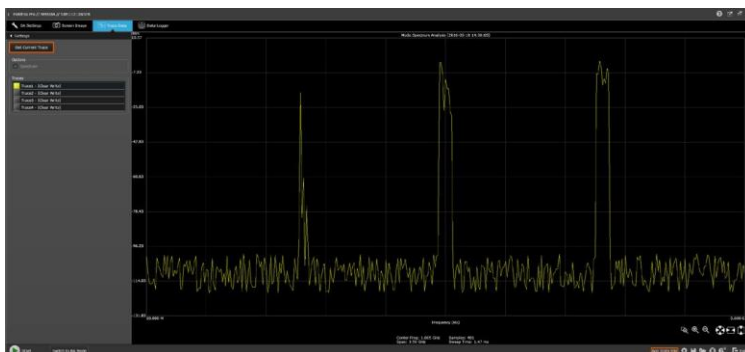


Model: BV0010B

Use your FieldFox in spectrum analyzer or network analyzer modes to quickly control parameters, capture measurements over time and build automated tests.

Supports the following models:

- N9912A-N9918A (7)
- N9923A-N9928A (5)
- N9935A-N9938A (4)
- N9950A-N9952A (3)
- N9960A-N9962A (3)



Universal Counter Control & Automation App

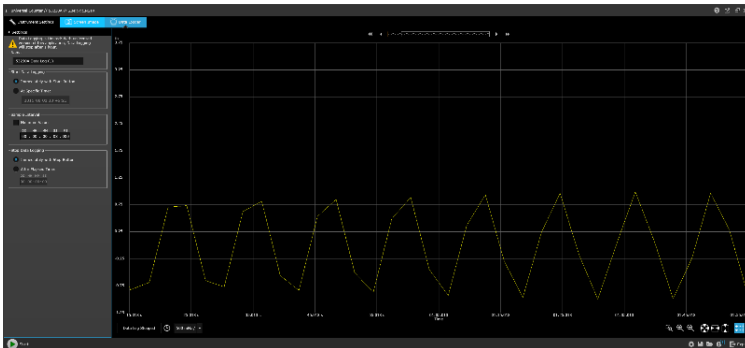


Model: BV0011B

Easily control your counters to quickly build automated tests and log data for faster analysis.

Supports the following models:

- 53210A¹
- 53220A¹
- 53230A¹



1. New Instrument purchases include a Node locked perpetual BenchVue app license

BenchVue Electronic Load Control & Automation App

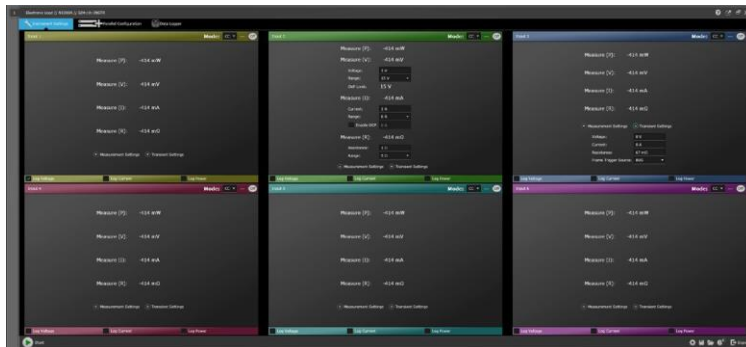


Model: BV0012B

Easily control your electronic loads, build automated tests, and visualize measurements over time.

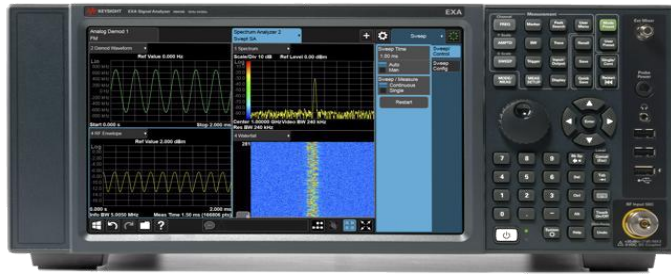
Supports the following models:

- N3300A¹
- N3301A¹
- 6060B
- 6063B
- EL33133A
- EL34143A¹
- EL34243A¹



1. New Instrument purchases include a Node locked perpetual BenchVue app license

BenchVue Spectrum Analyzer Control & Automation App



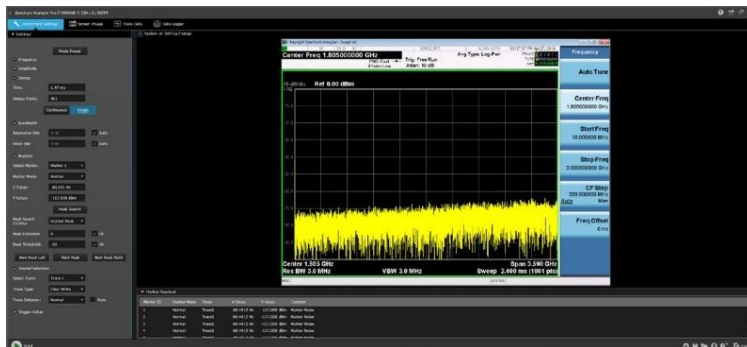
Model: BV9001B

(Exclusively available in the BenchVue Complete Control Collection)

Intuitively control your spectrum or signal analyzers, build automated tests, and log trace data.

Supports the following models:

- X-Series
 - N9040B UXA
 - N9030A/B PXA
 - N9020A/B MXA
 - N9010A/B EXA
 - N9000A/B CXA
 - M9290A CXA-m
- HSA N934xC (3)
- ESA E440xB (4)
- ESA L44xxB (3)
- PSA E444x (6)
- BSA N932xB/C (2)



BenchVue Network Analyzer Control & Automation App



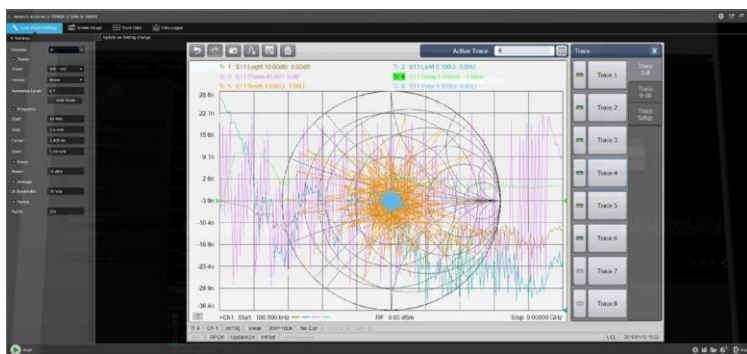
Model: BV9001B

(Exclusively available in the BenchVue Complete Control Collection)

Intuitively control your network analyzers, quickly build automated tests and acquire trace data.

Supports the following models:

- ENA E50xxA/B/C (5)
- PNA N522xA/B (10)
- PNA-L N523xA/B/C (11)
- PNA-X N524xA/B (12)
- PXI VNAs M937xA (6)
- PXIe multiport VNA M9485A



BenchVue Signal Generator Control & Automation App

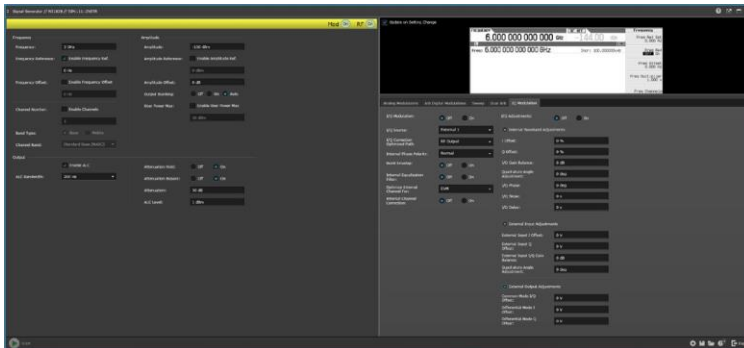


Model: BV9001B

(Exclusively available in the BenchVue Complete Control Collection)

Supports the following models:

- E4428C, E4438C
- E8257D, E8267D, E8663D
- EXG X-Series N517xB (3)
- MXG X-Series
 - N518xB (3)
 - N518xA (3)



BenchVue Power Analyzer Control & Automation App



Available to download for free

Conveniently control your power analyzers, quickly visualize measurements, and easily log data.

Supports the following models:

- PA2201A
- PA2203A

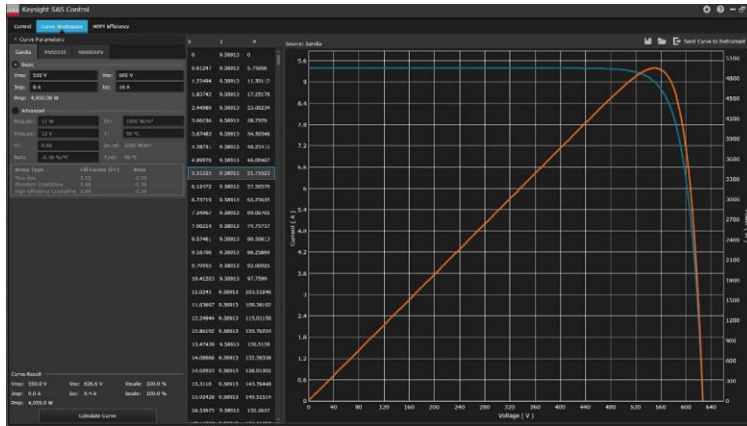


Solar Array Simulator Control



Model: DG8901A

Easily create, manipulate, view, and execute photovoltaic I-V curves for testing PV inverters.



BenchVue Current Analyzer Control and Analysis App



Model: BV0013B

Conveniently connect and control your current analyzers to quickly view measurements, build automated tests, and log data for analysis.

Supports the following models:

- CX3322A
- CX3324A



BenchVue LCR Meter Control and Automation App



Model: BV0014B

Connect and control your LCR meters to quickly view measurements, configure sweeps, build automated tests, and log data for analysis.

Supports the following models:

- E4980A
- E4980AL



USB Modular Digital Multimeter Control Pro App

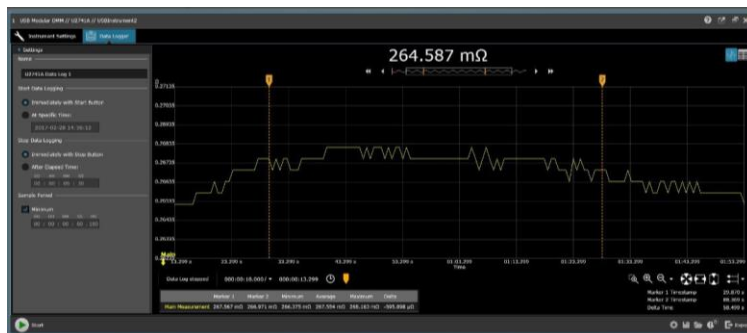


Model: BV0021B

Connect and control your USB Modular DMM to view measurements and plot or log data.

Supports the following model:

- U2741A¹



1. New Instrument purchases include a Node locked perpetual BenchVue app license

USB Modular Function Generator Control Pro App

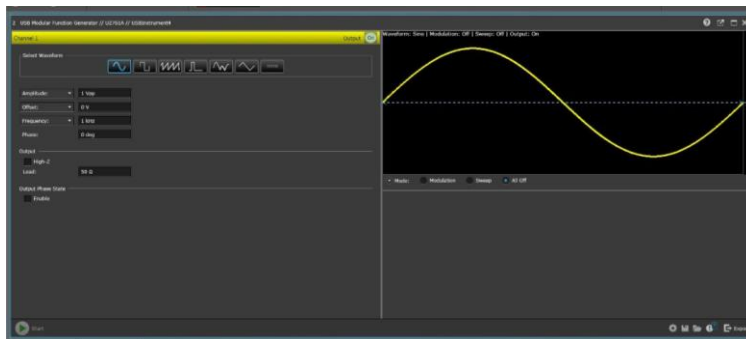


Model: BV0022B

Connect and configure your USB Modular function generator to create waveforms.

Supports the following model:

- U2761A¹



1. New Instrument purchases include a Node locked perpetual BenchVue app license.

USB Modular Source Measure Unit (SMU) Control Pro App

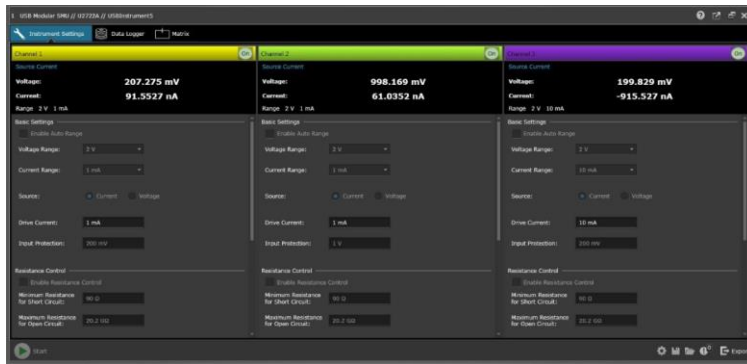


Model: BV0023B

Configure voltage and current source, range, and limits for USB Modular SMU channels and log data.

Supports the following models:

- U2722A¹
- U2723A¹



1. New Instrument purchases include a Node locked perpetual BenchVue app license.

USB Modular Oscilloscope Control Pro App

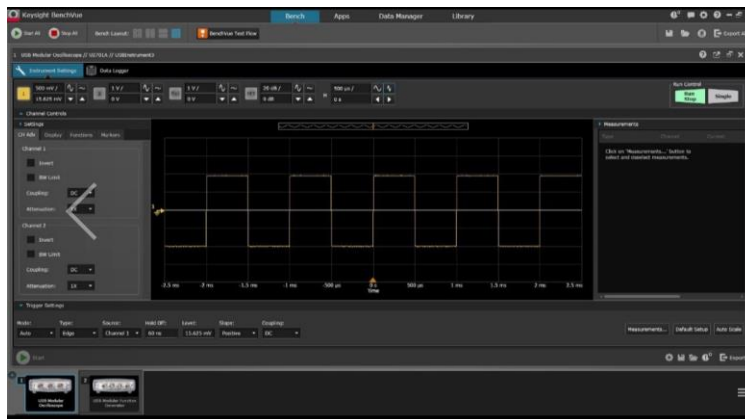


Model: BV0024B

Configure and control your USB Modular oscilloscope to capture screen images, record trace data and log measurements.

Supports the following models:

- U2701A¹
- U2702A¹



1. New Instrument purchases include a Node locked perpetual BenchVue app license.

USB Modular Data Acquisition Control Pro App

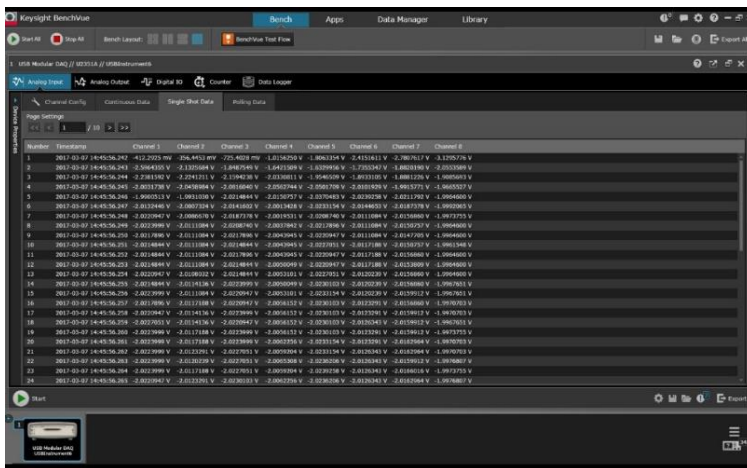


Model: BV0025B

Connect and configure your USB Modular DAQ channels to make measurements and log data.

Supports the following models:

- U2351A¹
- U2352A¹
- U2353A¹
- U2354A¹
- U2355A¹
- U2356A¹
- U2331A¹
- U2531A¹
- U2541A¹
- U2542A¹
- U2651A¹
- U2652A¹
- U2653A¹



1. New Instrument purchases include a Node locked perpetual BenchVue app license.

AC Source Control App



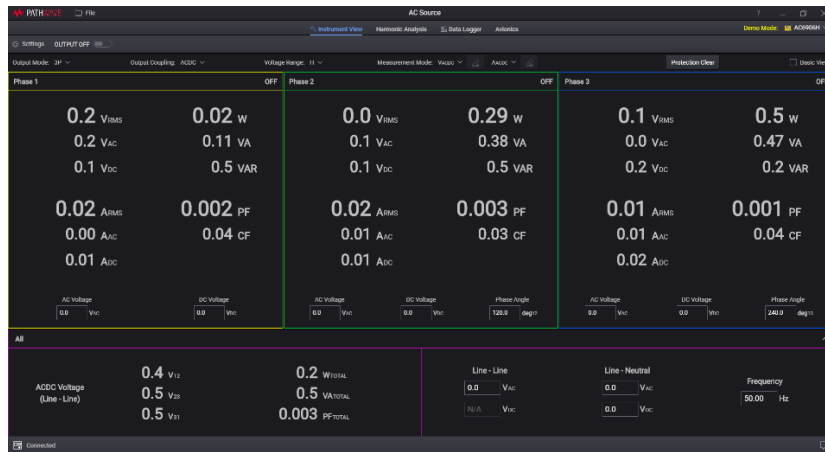
Model: BV0026B

Easily control your AC Source to capture measurements for quick analysis.

- All new standalone application

Supports the following models:

- AC6906L /H
- AC6912L /H
- AC6918L /H



AC Source Avionics Standard Test App



Model: BV0028B

Execute pre-compliance test as per the commercial and military standard requirements.

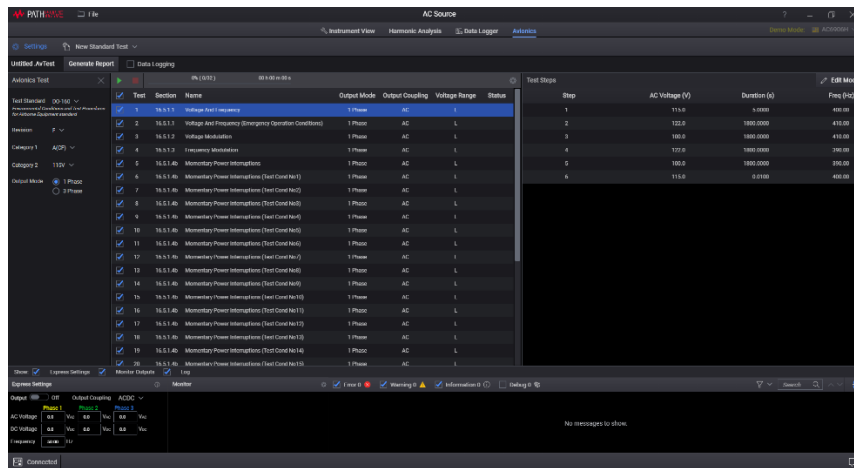
- All new standalone application

Military standard: Electric, Power, Aircraft, Characteristics and Utilization of Aircraft Electric Power Characteristics

Military Standard	Revision/Category	AC test					DC test	
		SAC	SVF	TAC	TVF	SXF	LDC	HDC
MIL-STD-704	Rev. A	✓	-	✓	-	-	✓	✓
	Rev. E	✓	-	✓	-	-	✓	✓
	Rev. F	✓	✓	✓	✓	✓	✓	✓

Civilian standard: Environmental Conditions and Test Procedures for Airborne Equipment

Civilian Standard ¹	Revision/Category	AC test					DC test	
		A CF	A NF	A WF	A	D	B	Z
RTCA/DO-160 Section 16	Rev. F	✓	✓	✓	✓	✓	✓	✓
	Rev. G	✓	✓	✓	✓	✓	✓	✓

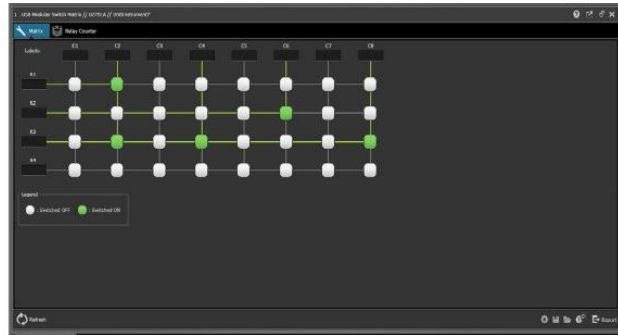


Supports the following models:

- AC6906L /H
- AC6912L /H
- AC6918L /H

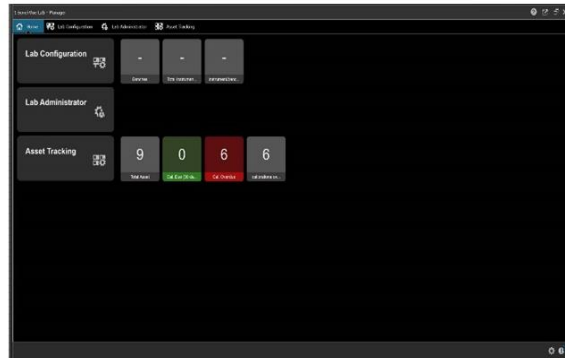
1. Following standard test items are not supported due to output voltage limitation:
 - 16.5.1.5.1 Normal Surge Voltage for 230V equipment and 16.5.2.3.1 Abnormal Surge Voltage at RTCA/DO-160F and RTCA/DO-160G

USB Modular Switch Matrix App



Easily open and close relays channels on your USB Modular switch matrix.

BenchVue Lab - Manager



Centralized control and bench management of instruments in a lab environment. Model BV0110B.

BenchVue Lab – Client



Used with Lab Manager to control instruments and bench setups from a central PC Model: BV9111B.

BenchVue Education Lab and Control Collection



Model: BV9111B

Exclusively for schools and universities, free student access designed to fit into an education budget. Multiple networked licenses.



Advanced Power Control and Analysis for a Single Instrument



Model: BV9201B

Connect easily and access your Power Supply's advanced sourcing and measurement features. Allows user to control a single instrument.

Supports the following models:

- N6705C
- N7900 Series
- RP7900 Series



Advanced Power Control and Analysis Supports up to Four Instruments



Model: BV9200B

Connect easily and access your Power Supply's advanced sourcing and measurement features. Allows user to control up to four instruments.

Supports the following models:

- N6705C
- N7900 Series
- RP7900 Series



Serial Control & Automation App



Available to download for free

Intuitively send receive commands from your serial devices to your PC. Control and automate serial devices within BenchVue along with your instruments.

BenchVue Software Supported Instruments

Each of the BenchVue apps support certain Keysight instrument models. These apps are updated regularly with additional models. For the most current supported instrument list, visit: www.keysight.com/find/BenchVueInstruments

BenchVue Mobile¹

Mobile apps let you monitor and respond to long running tests from anywhere for our most popular instrument families. Multimeters, oscilloscopes, function generators, spectrum analyzers and power supplies are all supported from one app.

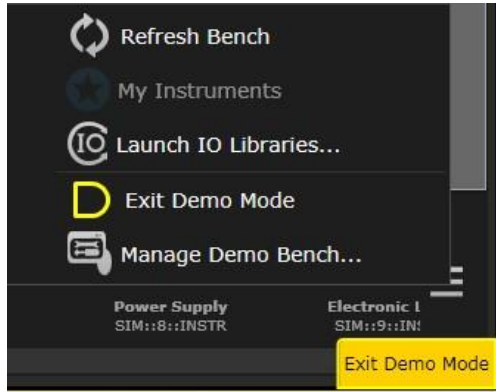


BenchVue mobile is a mobile app that you can install on an Android or Apple iOS device to control BenchVue bench applications running on your Windows computer. BenchVue mobile connects to your computer as a client and requires that your mobile device and computer be connected to the same local network or intranet (behind the same corporate firewall). This network connection can be made via a WiFi connection inside your work location or externally through a VPN connection.

1. Available only on pre 2021 versions.

BenchVue Demonstration Mode

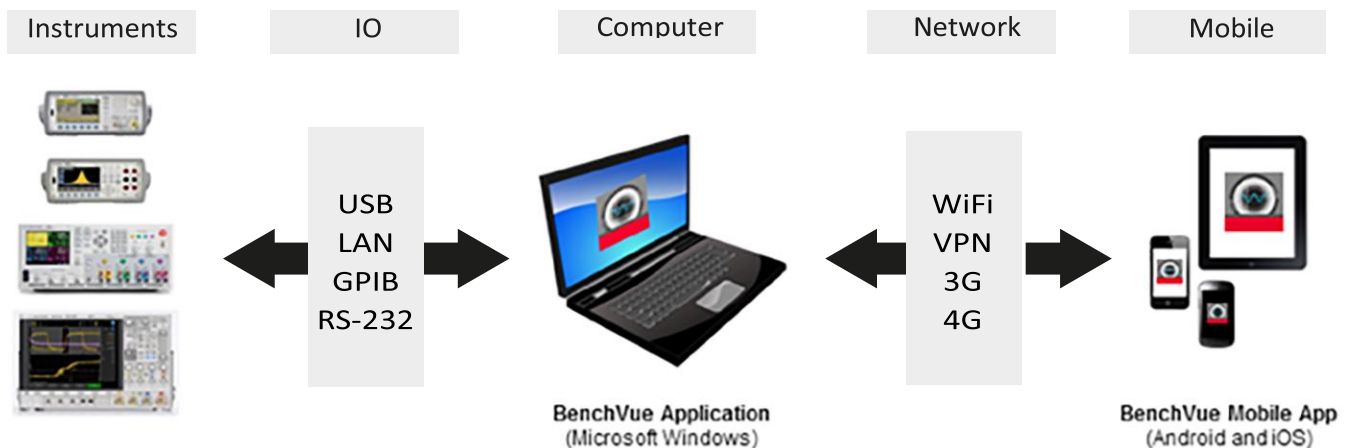
BenchVue includes a demonstration mode that does not require instruments to be connected, making product evaluation quick and easy. Simply download and click “enable demo mode” under the global setting menu to begin exploring BenchVue functionality.



To assist in the evaluation of BenchVue with physical instruments, BenchVue includes an integrated help file and getting started guide to make setup quick and easy.

Supported Apps for BenchVue Mobile¹

- Digital Multimeter app
- Function Generator app
- Power Supply app
- Spectrum Analyzer app
- Oscilloscope app



1. Available only on pre 2021 versions.

License Terms, License Types, and Support Subscriptions

You can now choose your license type (node-locked (fixed), transportable, floating (single site, single region, worldwide), or USB portable), license term (perpetual or subscription), and then choose the KeysightCare Software Support subscription period that best meets your needs. See more details below.

License terms

License Term	Description
Perpetual	Licenses can be used indefinitely.
Subscription	Licenses can be used through the term of the subscription (6, 12, or 24 months).

License types

License Type	Description
Node-locked	License can be used on one specified instrument/computer.
Transportable	License can be used on one instrument/computer at a time but may be transferred to another using Keysight Software Manager (internet connection required).
USB Portable	License can be used on one instrument/computer at a time but can be transferred to another using a certified USB dongle (available for additional purchase, Keysight part number E8900-D10).
Floating	Networked instruments/computers can access a license from a server one at a time. Multiple licenses may be purchased for concurrent usage. Three types of floating license are available: Single Site : 1-mile radius from the server; Single Region ¹ : Americas; Europe; Asia; Worldwide (export restriction identified in End User License Agreement (EULA))

1. Americas (North, Central, and South America, Canada); Europe (European Continent, Middle Eastern Europe, Africa, India); Asia (North and South Asia Pacific Countries, China, Taiwan, Japan)

KeysightCare Software Support subscriptions

Subscription	Description
KeysightCare Software Support	Perpetual licenses are sold with a 12 (default), 24, 36, or 60-month software support subscription. Support subscriptions may be renewed for a fee after that.
	Software subscription licenses include software support through the term of the license.

Ordering New BenchVue Software Apps and Collections

Step 1: Choose your software product.

Step 2: Choose your license: perpetual or subscription.

Step 3: Choose your license type: node-locked, transportable, USB portable, or floating.

Step 4: Depending on the license term, choose your subscription or support duration.

Product	License type	License term			
		Perpetual		Subscription	
		License	Support	License & support	
S1234567A	Node-locked (fixed)	R-x5y-001-A	+	R-x6y-001-z	R-x4y-001-z
	Transportable	R-x5y-004-D	+	R-x6y-004-z	R-x4y-004-z
	USB Portable ¹	R-x5y-005-E	+	R-x6y-005-z	R-x4y-005-z
	Floating (single site)	R-x5y-002-B	+	R-x6y-002-z	R-x4y-002-z
	Floating (single region)	R-x5y-006-F	+	R-x6y-006-z	R-x4y-006-z
	Floating (worldwide)	R-x5y-010-J	+	R-x6y-010-z	R-x4y-010-z
		z =	Duration	z =	Duration
		L	12 months (default)	F	6 months
		X	24 months	L	12 months
		Y	36 months	X	24 months
		Z	60 months	Y	36 months

¹ USB portable license requires a certified USB dongle (available for additional purchase, Keysight part number E8900-D10)

Additional Licensing Considerations

An Entitlement Certificate is delivered with each purchased software order. Follow the directions on the certificate to redeem your order for your license. License redemption requires an internet connection.

Many Keysight instruments include a Node-Locked Perpetual license with a new instrument purchase. These licenses are locked to your instrument and must be activated by connecting your instrument to BenchVue 2019 (or above) to activate. Visit www.keysight.com/find/IncludedBenchVue and www.keysight.com/find/benchvuelicensehelp for more information.

BenchVue Node-locked licenses purchased separately i.e., not included with an instrument, are node-locked to a PC and not to an instrument.

Floating License Server Requirements

Network Floating licenses require loading a vendor daemon on a license server. This server may be the same PC running BenchVue software or a separate server. Full installation instructions ([5951-5739](tel:5951-5739)) and support are provided for compatible server operating systems:

Keysight license server software (lmgrd.exe and agilesofd.exe) is supported on Microsoft Windows 7 Enterprise SP1 (32-bit and 64-bit) Microsoft Windows 10 Creators Update (32-bit and 64-bit), 64-bit Red Hat Linux v7.0

Keysight License Manager 6 is supported on: 64-bit Microsoft Windows 7 Enterprise SP1, Microsoft Windows 10 Creators Update 64-bit

The license server software is supported on 32-bit and 64-bit Windows and 64-bit Linux systems, but the Keysight License Manager 6 utility is supported on 64-bit Windows systems only. To setup licensing on 32-bit Windows and on Linux systems, use the processes described in the Manual License Setup section of <https://literature.cdn.keysight.com/litweb/pdf/5951-5739.pdf>

System and Installation Requirements

Computer operating system	
Windows 10 & 8	Windows 10 32-bit and 64-bit (Professional, Enterprise, Education, Home versions) Windows 8, 8.1 32-bit and 64-bit (Professional, Enterprise, Core)
Windows 10 ¹	64-bit (version 1809 or later) ¹
Computer hardware	Processor: 1 GHz or faster (2 GHz or greater recommended), Intel Core i5 (or equivalent) RAM: 1 GB (32-bit) or 2 GB (64-bit) (3 GB or greater recommended) Intel Core i5 (or equivalent) ¹ RAM: 8 GB ¹ Storage: 900 MB free space for Windows ¹
Interfaces	USB, GPIB, LAN, RS-232
Display resolution	1280 x 1024 minimum recommended for single instrument view (higher resolution recommended for multiple instrument view) 1920 x 1080 minimum ¹
Data Exports to Excel or csv ¹	Pathwave supports Microsoft Office 2003 and later ¹

1. Applies to BenchVue Digital Multimeter, Oscilloscope, Power Supply and Function Generator apps only.

Additional requirements

BenchVue requires a VISA library when used to connect to physical instruments. Keysight IO Libraries Suite, which contains the necessary VISA, will be downloaded and installed automatically when BenchVue is installed if needed. IO Libraries Suite 2021 or newer is recommended. IO Libraries Suite information is available at: www.keysight.com/find/iosuite

Mobile devices

Apple iPhone, iPad, iPod Touch all models; iOS 9.0 and later. Android phone and tablets; Android 4.0.3 and later.

BenchVue software for PC

Download a free 30-day trial today at: www.keysight.com/find/BenchVue

BenchVue software for mobile devices

Find BenchVue mobile for your respective device by visiting www.keysight.com/find/BenchVueMobile

Keysight also offers a variety of optional start-up assistance and project consulting services to help you maximize your test development productivity.

Contact your Keysight sales specialist
www.keysight.com/find/services

Learn more at: www.keysight.com

For more information on Keysight Technologies' products, applications or services, please contact your local Keysight office. The complete list is available at: www.keysight.com/find/contactus

