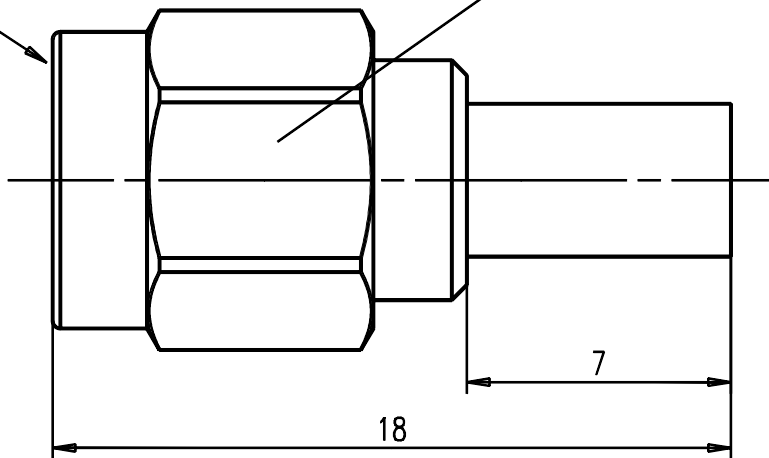


Steckbereich nach IEC 169-15 Grade1
Mating area acc.to IEC 169-15 Grade1

SW8

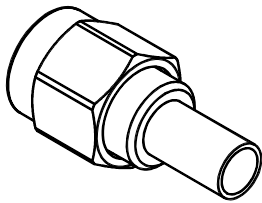


Kabelzuschnitt
Stripping dimension

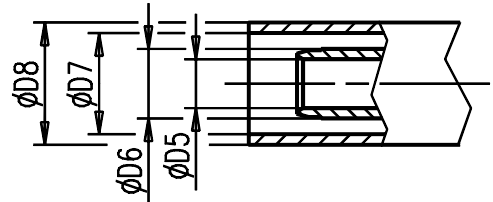
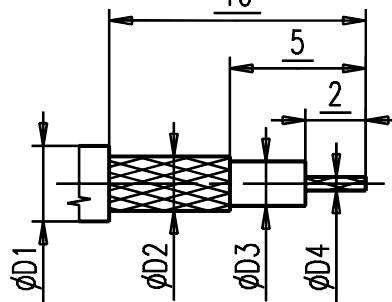
10

5

2



2:1



Fuer Kabel /
For cable

Gr.	Type Typ	$\phi D1$ max.	$\phi D2$ max.	$\phi D3$ max.	$\phi D4$ max.	$\phi D5$	$\phi D6$	$\phi D7$	$\phi D8$	Crimp Aussen/out	Crimp Innen/in
1											
2	RG 188 A/U	2,80	2,24	1,67	0,54	1,70	2,30	3,00	4,00	3,25	solder
3											
4											
5	KO 2252 d	3,05	2,50	1,55	0,54	1,70	2,30	3,30	4,00	3,25	solder

IMS CONNECTOR
SYSTEMS

general tolerance
ISO 2768
mH

scale: 5:1 (2:1)

Assembly instruction:
Stripping dimension:

date name
10.08.88 Schwaer
generate
checked
Norm
31184

Kabelstecker

Cable mount plug

101/02 b Kabelzuschnitt 28.02.02 I.S.
387/01 a neue Mutter 20.06.01 Pichl



526.42.1410.0''

Rev.
b

nr. rev. alteration date name