

**CLAMPING ELEMENTS**

Black-oxide steel.

**CLAMPING SCREW**

Zinc-plated steel.

**SPRING**

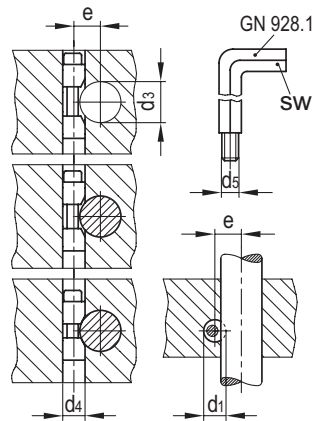
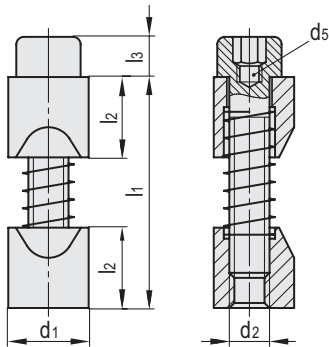
Stainless steel.

**ASSEMBLY TOOL (TO BE ORDERED SEPARATELY)**

Black-oxide steel.

**FEATURES AND APPLICATIONS**

GN 928 clamping elements allow the fastening of round cross section shafts, from 6 to 125 mm of diameter, in a precise and quick way. d1 threaded hole can be used for connecting to other elements, for clamping by means of GN 928.1, for connecting to a grub screw in order to keep the element in axial position during assembly.



Code	Description	d1 h11	d4 H7	d2	d3	d5	l1	l2	l3	e+0.2	sw	⚖	Assembly tool
GN.68451	GN 928-8	8	8	M4	6 + 10	M2.5	22	8	4	d3/2 + 2.8	3	5	GN 928.1-3
GN.68452	GN 928-10	10	10	M5	10 + 15	M3	30	10	5	d3/2 + 3.3	4	15	GN 928.1-4
GN.68453	GN 928-12	12	12	M6	15 + 20	M4	36	12	6	d3/2 + 3.5	5	20	GN 928.1-5
GN.68454	GN 928-16	16	16	M8	20 + 30	M5	48	16	8	d3/2 + 4	6	52	GN 928.1-6
GN.68455	GN 928-20	20	20	M10	30 + 40	M6	60	20	10	d3/2 + 4.8	8	105	GN 928.1-8
GN.68456	GN 928-25	25	25	M12	40 + 60	M8	72	25	12	d3/2 + 5.6	10	190	GN 928.1-10
GN.68457	GN 928-30	30	30	M16	60 + 125	M10	85	30	16	d3/2 + 7.9	14	345	GN 928.1-14

- 1
- 2
- 3
- 4
- 5
- 6
- 7
- 8
- 9
- 10
- 11
- 12
- 13
- 14
- 15
- 16
- 17
- 18