

# GN 124.1 | Magnetic self-locking pins

Stainless steel



- 1
- 2
- 3
- 4
- 5
- 6
- 7
- 8
- 9
- 10
- 11
- 12
- 13
- 14
- 15
- 16
- 17
- 18

## PIN

AISI 303 stainless steel.

## KNOB

Glass-fibre reinforced polyamide based (PA) technopolymer, grey-black colour, provided with holes for security ring.

## STANDARD EXECUTION

(NdFeB) Neodymium-iron-boron retaining magnet, for temperatures up to 80°C.

Retaining magnets technical data (on page 756).

## FEATURES AND APPLICATIONS

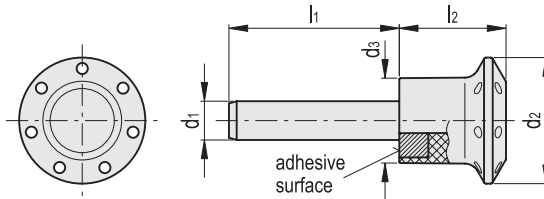
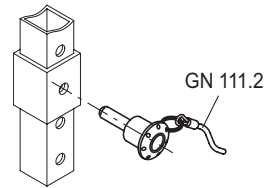
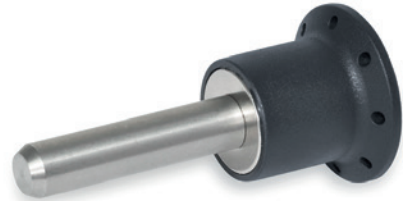
GN 124.1 self-locking pins are used for fast fixing between magnetic parts.

The presence of a neodymium magnet in the knob guarantees the maintenance of the pin in the axial retention position.

High-quality surfaces and precise perpendicularity of the positioning holes guarantee maximum efficiency of the magnetic flux.

## ACCESSORIES ON REQUEST

- ball chains GN 111 (see page 816);
- retaining cables GN 111.2 (see page 817);
- spiral retaining cables GN 111.4 (see page 818).



Code	Description	d1-0.04-0.08	d2	d3	l1	l2	Mounting hole	Double sided shearing force [KN]#	Axial adhesive forces* [N]	⚖️
GN.17401	GN 124.1-6-12	6	26	17.5	12	22	6	22	65	14
GN.17403	GN 124.1-6-17	6	26	17.5	17	22	6	22	65	19
GN.17405	GN 124.1-6-22	6	26	17.5	22	22	6	22	65	20
GN.17407	GN 124.1-6-27	6	26	17.5	27	22	6	22	65	21
GN.17409	GN 124.1-6-32	6	26	17.5	32	22	6	22	65	22
GN.17411	GN 124.1-6-42	6	26	17.5	42	22	6	22	65	24
GN.17413	GN 124.1-6-52	6	26	17.5	52	22	6	22	65	27
GN.17421	GN 124.1-8-17	8	26	17.5	17	22	8	40	45	24
GN.17423	GN 124.1-8-22	8	26	17.5	22	22	8	40	45	24
GN.17425	GN 124.1-8-27	8	26	17.5	27	22	8	40	45	23
GN.17427	GN 124.1-8-32	8	26	17.5	32	22	8	40	45	27
GN.17429	GN 124.1-8-42	8	26	17.5	42	22	8	40	45	31
GN.17431	GN 124.1-8-52	8	26	17.5	52	22	8	40	45	35
GN.17433	GN 124.1-8-62	8	26	17.5	62	22	8	40	45	38
GN.17441	GN 124.1-10-18	10	34	23	18	28.5	10	62	95	43
GN.17443	GN 124.1-10-23	10	34	23	23	28.5	10	62	95	46
GN.17445	GN 124.1-10-28	10	34	23	28	28.5	10	62	95	49
GN.17447	GN 124.1-10-33	10	34	23	33	28.5	10	62	95	52
GN.17449	GN 124.1-10-43	10	34	23	43	28.5	10	62	95	58
GN.17451	GN 124.1-10-53	10	34	23	53	28.5	10	62	95	64
GN.17453	GN 124.1-10-63	10	34	23	63	28.5	10	62	95	71
GN.17461	GN 124.1-12-23	12	34	23	23	28.5	12	90	75	52
GN.17463	GN 124.1-12-33	12	34	23	33	28.5	12	90	75	61
GN.17465	GN 124.1-12-43	12	34	23	43	28.5	12	90	75	70
GN.17467	GN 124.1-12-53	12	34	23	53	28.5	12	90	75	78
GN.17469	GN 124.1-12-63	12	34	23	63	28.5	12	90	75	87
GN.17471	GN 124.1-12-83	12	34	23	83	28.5	12	90	75	103

# The double sided shear force values reported in the table should be treated as guidelines only since no safety factor is considered.

\* The values of the adhesive forces are approximate and refer to magnetic properties of laboratory samples.

Indexing and positioning elements