



Surface mounting enclosure, 4 mounting locations



Powering Business Worldwide™

Part no. M22-I4
Article no. 216539
Catalog No. M22-I4Q

Delivery programme

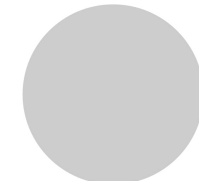
Product range
 Basic function
 Basic function accessories
 Single unit/Complete unit
 Number of locations
 Cable entry knockouts
 Cable entry
 Colour

Qty.

RMQ-Titan (drilling dimensions 22.5 mm)
 Accessories
 Surface mounting enclosure
 Single unit
 With high-grade steel screws
 4
 at bottom: 2 x M20
 at top: 2 x M20
 lateral: 2 x M20/M25 (1 x each side)

RAL Value
 Colour
 Protection type
 Connection to SmartWire-DT

RAL 7035
 Enclosure base anthracite
 IP67, IP69K
 no



Approvals

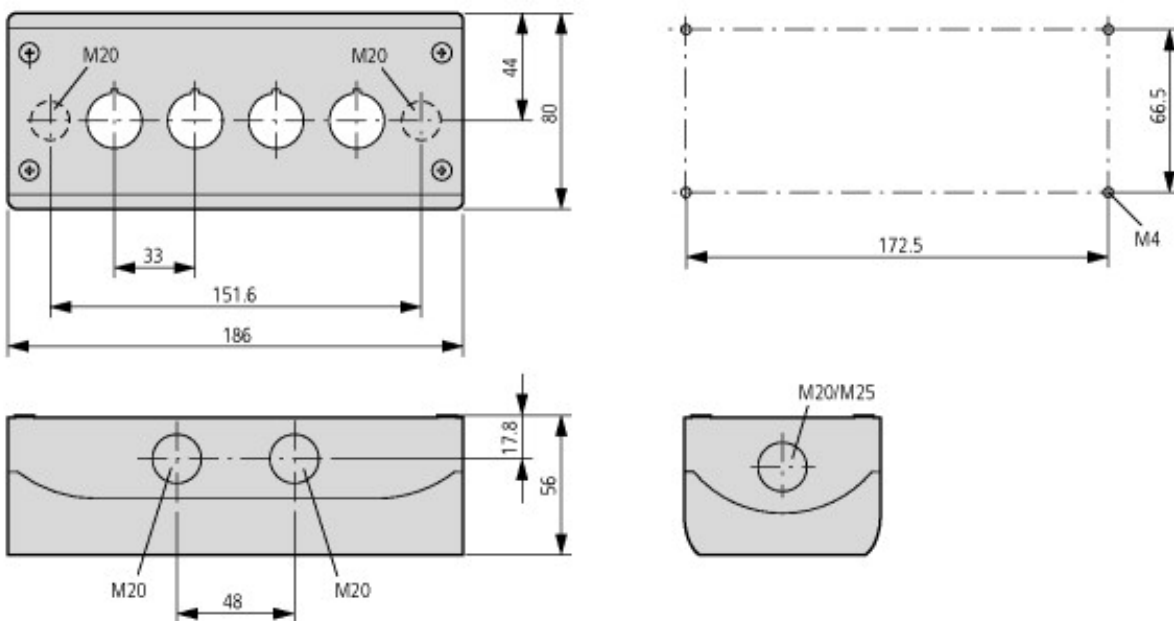
Product Standards
 UL File No.
 UL Category Control No.
 CSA File No.
 CSA Class No.
 North America Certification
 Degree of Protection

IEC/EN 60947-5; UL 508; CSA-C22.2 No. 14-05; CSA-C22.2 No. 94-91; CE marking
 E29184
 NKCR
 012528
 3211-03
 UL listed, CSA certified
 UL/CSA Type 3R, 4X, 12, 13

Technical data ETIM 5.0

Low-voltage industrial components (EG000017) / Enclosure for control circuit devices (EC000200)
 Electric engineering, automation, process control engineering / Low-voltage switch technology / Command and alarm device / Housing for command and alarm devices
 (ecl@ss8-27-37-12-05 [AKF023010])
 Number of command positions 4
 Construction type housing Surface mounting housing
 Material housing Plastic
 Diameter openings mm 22
 Colour housing cover Grey
 Degree of protection (IP) IP67
 Width mm 186
 Height mm 56
 Depth mm 80

Dimensions



Premoulded cable entry: bottom 2 x M20, top: 2 x M20, side: 2 x M20/M25 (per side 1 x)

Additional product information (links)

IL04716003Z (AWA1160-1746) RMQ-Titan System	
IL04716003Z (AWA1160-1746) RMQ-Titan System	ftp://ftp.moeller.net/DOCUMENTATION/AWA_INSTRUCTIONS/IL04716003Z2011_02.pdf