

PRODUCT CHANGE NOTIFICATION

Date Issued: August 20, 2020

Product Identification: Bel SI-16xxx-F and SI-46xxx-F Series ICMs

PCN Number: PC4200092

Reason for Change (s): In an effort to continually improve our product, Bel is pleased to announce an update to the assembly method for the SI-series Vertical ICMs. The change lowers the risk of hi-pot failures in products related to the soldering method of the capacitor and resistors within the part.

The affected part numbers are:

SI-16001-F	SI-46006-F	SI-46019-F
SI-16002-F	SI-46008-F	SI-46020-F
SI-16003-F	SI-46009-F	SI-46021-F
SI-16004-F	SI-46010-F	SI-46022-F
SI-16006-F-R	SI-46013-F	SI-46023-F
SI-16007-F	SI-46014-F	SI-46024-F
SI-46001-F	SI-46015-F	SI-46025-F
SI-46004-F	SI-46016-F	SI-86001-F
SI-46005-F	SI-46017-F	SI-86003-F

These changes will not affect “form, fit, or function”, nor do they affect any other dimensions or electrical parameters of the part. No other related changes to the above series are being implemented at this time.

Description of the Change (s): The previous soldering method of the capacitor and resistors was a manual process which could lead to inconsistencies surrounding the high voltage capacitor that

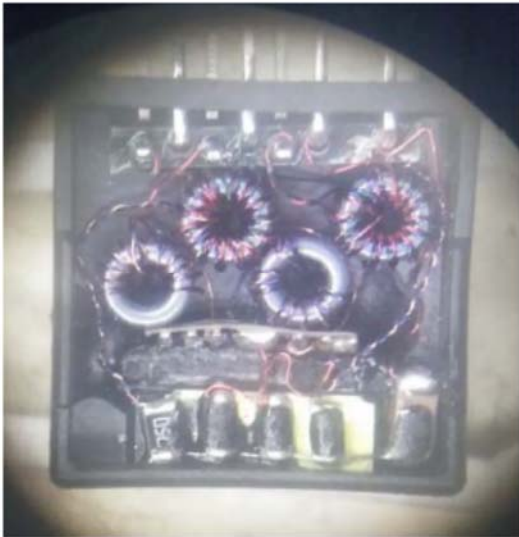
increased the risk of hi-pot failures in production testing. To resolve the issue, the capacitor and resistors are now automatically placed on a PCBA and reflow soldered by machine. The placement of each component is precise and risk surrounding the high voltage capacitor is resolved. Please see the details below.

WAS

Manual solder the capacitor & resistor .



Wire connection and dressing:



IS

PCBA: the capacitor & resistor onto PCB by SMT process



FG outline: the outline is the same.



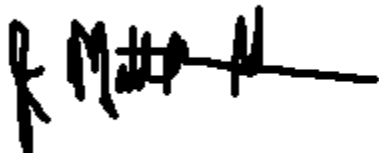
Planned Timing and Implementation of Change: This change will be implemented on any new orders after September 25, 2020.

Impact on Quality and Reliability: None.

Availability of Qualification Data: None.

Remarks: None.

Signature: John Hess, ICM Product Manager

A handwritten signature in black ink, appearing to read 'R. Hess', with a long horizontal line extending to the right.

(Bel Representative)

Note: This form should only be used for advising the customer.