

Top Cut 4 indexable inserts, internal, V36

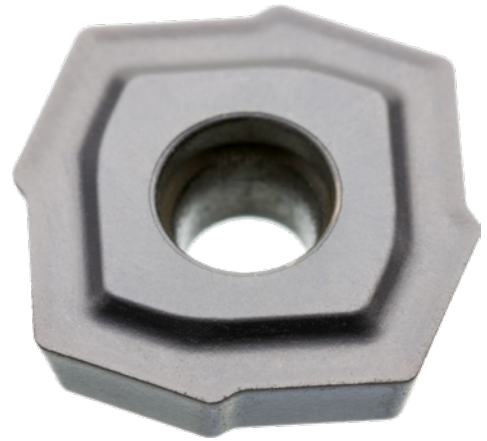
Cemented carbide type: WU40PH



Application:

First choice for long-chipping materials, such as steel and stainless steel. Can be used even if low power consumption is required

Art. no.	11214 062
Brand	WIDIA
Manufacturer Part Number	5542607
Cutting material	SC
Surface	TiAlN
Suitable for indexable inserts type	B
Size of indexable insert	6 mm
Inner circle diameter	2.4 mm
Cutting width	4.9 mm
Thickness of indexable insert	2.4 mm
Corner radius	0.3 mm
Clearance angle	11 Degree
Carbide type	WU40PH
Gross Weight	0.002 kg
Product Group	1XC



EAN

4050839913862