


PCB TERMINAL BLOCKS

5.08mm DIN Rail Mounted Inverted/Reverse

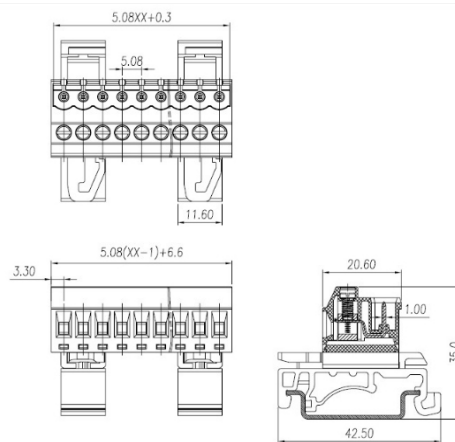
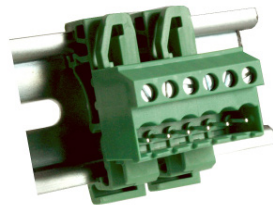
- Horizontal & vertical orientations
- Polarized moldings
- Can be reversed on DIN clips
- Also available in 5mm pitch
- Molded in green UL94-V0 flame retardant PA 66
- 2.5mm² (28-14AWG)
-  approved
- 6-12 poles standard (13-24 also available)

SPECIFICATION

Rating	UL=15A/300V IEC 20A/450V
Insulation resistance	500MΩ/500V
Withstand Voltage	AC2000V/1min
Contact Resistance	20mΩ (max)
Working Temperature	-40°C to 105+°C
Mouldings	UL94-V0 Flame retardant PA66
Pin/Terminal	Brass, Tin plated
Rising Clamp	Brass, nickel plated
Screw/Torque	M3 Steel, zinc plated 0.5Nm

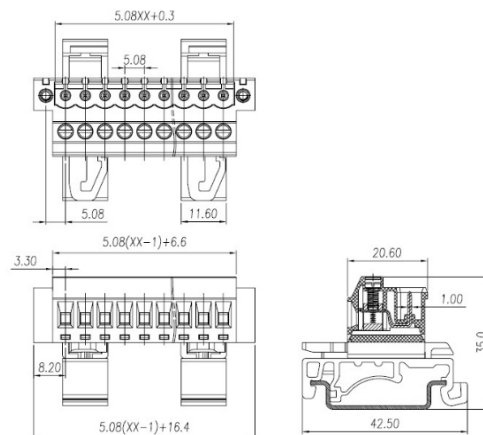
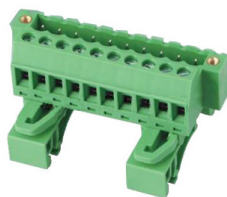
DIN Rail Male Vertical Connector

TYPE NO.	POLES	LENGTH	CTBPD96VJ
CTBPD96VJ/6	6	32.0mm	
CTBPD96VJ/7	7	37.08mm	
CTBPD96VJ/8	8	42.16mm	
CTBPD96VJ/9	9	47.24mm	
CTBPD96VJ/10	10	52.32mm	
CTBPD96VJ/11	11	57.04mm	
CTBPD96VJ/12	12	62.48mm	



DIN Rail Male Vertical Connector, Flanged

TYPE NO.	POLES	LENGTH A	LENGTH B	CTBPD96VJ/FL
CTBPD96VJ/6FL	6	32.0mm	41.08mm	
CTBPD96VJ/7FL	7	37.08mm	46.88mm	
CTBPD96VJ/8FL	8	42.16mm	51.96mm	
CTBPD96VJ/9FL	9	47.24mm	57.04mm	
CTBPD96VJ/10FL	10	52.32mm	62.12mm	
CTBPD96VJ/11FL	11	57.04mm	67.02mm	
CTBPD96VJ/12FL	12	62.48mm	72.28mm	



PCB
TERMINAL
BLOCKS

INTER-
CONNECTION

FUSES &
FUSE-
HOLDERS

LEDs &
INDICATORS

MINIATURE
SWITCHES

LIMIT &
SAFETY
SWITCHES

CONTROL
PRODUCTS

INTERFACE
MODULES &
SUPPORTS

RELAY
BASES

DIN RAIL
ENCLOSURES

BATTERIES

SOLAR
PANELS

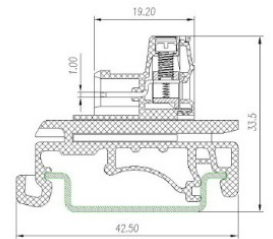
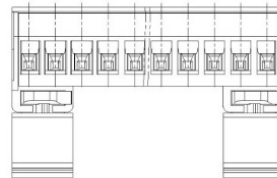
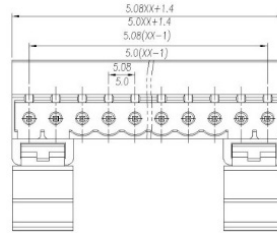
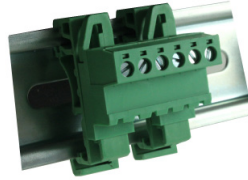
TRANS-
FORMERS

PCB TERMINAL BLOCKS

DIN Rail PCB Mounting Female Horizontal

CTBPD96HJ

TYPE NO.	POLES	LENGTH
CTBPD96HJ/6	6	31.88mm
CTBPD96HJ/7	7	36.96mm
CTBPD96HJ/8	8	42.04mm
CTBPD96HJ/9	9	47.12mm
CTBPD96HJ/10	10	52.02mm
CTBPD96HJ/11	11	57.28mm
CTBPD96HJ/12	12	62.36mm



DIN Rail PCB Mounting Female Horizontal, Flanged

TYPE NO.	POLES	LENGTH A	LENGTH B
CTBPD96HJ/6FL	6	31.88mm	40.64mm
CTBPD96HJ/7FL	7	36.96mm	45.72mm
CTBPD96HJ/8FL	8	42.04mm	50.08mm
CTBPD96HJ/9FL	9	47.12mm	55.88mm
CTBPD96HJ/10FL	10	52.02mm	60.96mm
CTBPD96HJ/11FL	11	57.28mm	66.04mm
CTBPD96HJ/12FL	12	62.36mm	71.12mm

CTBPD96HJ/FL

