



LV HRC FUSE LINK GL/GG WITH NON-INSULATED GRIP LUGS WITH COMBINATION INDICATOR SIZE 2, 63A, AC 500V/DC 440V

Figure similar

Model		
product brand name		SETRON
Product designation		LV HRC fuse link
Design of an identification indicator		Combination alarms
Design of the switching contact		Non-corroding, silver-plated
Design of the fuse link		LV HRC fuse link
General technical data		
Size of fuse system / acc. to DIN EN 60269-1		NH2
Operating class of the fuse link		gG
circuit-breaker / Design		3NA7
Mounting type		Non-insulated grip lugs
Protection class		
Protection class IP		IP20, with connected conductors
Switching capacity		
<b>Switching capacity current</b>		
<ul style="list-style-type: none"> <li>for DC / acc. to IEC 60947-2 / Rated value</li> </ul>	kA	25
<ul style="list-style-type: none"> <li>acc. to IEC 60947-2 / Rated value</li> </ul>	kA	120
Dissipation		
<b>Active power loss</b>		
<ul style="list-style-type: none"> <li>for rated value of the current / with AC / in hot operating state / per pole</li> </ul>	W	5.9
Electricity		
rated current I <sub>n</sub> / IEC, DIN/VDE / at 40 Cel	A	59.85

Current / with AC / Rated value	A	63
---------------------------------	---	----

### Mechanical Design



mounting position	Any, preferably vertical
-------------------	--------------------------


### Environmental conditions

<b>Ambient temperature</b>		
• minimum	°C	-5
• maximum	°C	40
• during storage / Note		Air humidity 90% at 20 °C

### Certificates

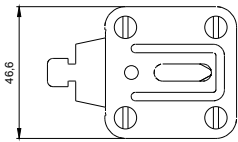
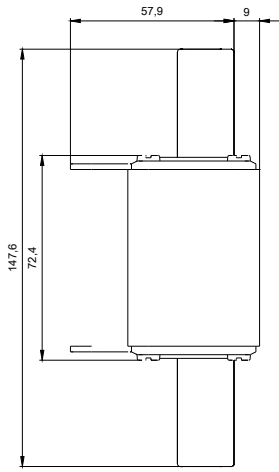
<b>Equipment marking</b>		
• acc. to DIN EN 61346-2		F
• acc. to DIN EN 81346-2		F

General Product Approval	Declaration of Conformity	Test Certificates
 KEMA  GOST  VDE  EAC  EG-Konf.		<a href="#">Type Test Certificates/Test Report</a>

Test Certificates	Shipping Approval	other
<a href="#">Special Test Certificate</a> <a href="#">other</a>	 GL	<a href="#">other</a>

### Further information

- Information- and Downloadcenter (Catalogs, Brochures,...)**  
<http://www.siemens.com/lowvoltage/catalogs>
- Industry Mall (Online ordering system)**  
<https://eb.automation.siemens.com/mall/en/WW/Catalog/Product/3NA7222>
- Service&Support (Manuals, Certificates, Characteristics, FAQs,...)**  
<http://support.automation.siemens.com/WW/view/en/3NA7222/all>
- Image database (product images, 2D dimension drawings, 3D models, device circuit diagrams, ...)**  
[http://www.automation.siemens.com/bilddb/cax\\_en.aspx?mlfb=3NA7222](http://www.automation.siemens.com/bilddb/cax_en.aspx?mlfb=3NA7222)
- CAX-Online-Generator**  
<http://www.siemens.com/cax>
- Tender specifications**  
<http://ausschreibungstexte.siemens.com/tiplv>



**last modified:**

11.03.2015