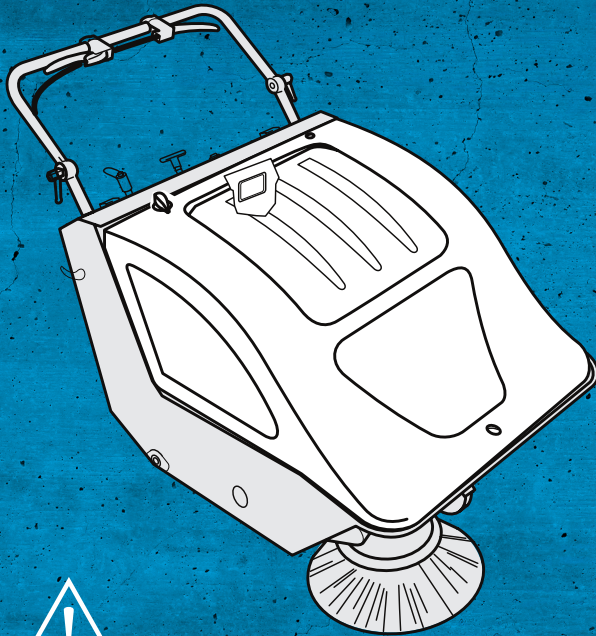




SWEEPER MV1100

MAXVAC



INSTRUCTION
MANUAL



SWEeper MV1100

Carefully read these instructions before use and keep them safely after reading for later reference.

INSTRUCTION MANUAL

SAFETY PRECAUTIONS	6
WARRANTY	7
SAFETY WARNING	8
SPARE PARTS, CLEANING & DEMOLITION	9
CONTROL PANEL	10
INSTRUCTIONS	11
BRUSH & BELT CHANGING	12
FILTER PANEL CLEANING	14
SPECIFICATIONS	15
PARTS	16
MALFUNCTIONS	22
COMMON MAINTENANCE	23
EU DECLARATION OF CONFORMITY	25



Dear customer,

Thank you for choosing a MV1100 Sweeper made by MAXVAC.

The MV1100 from MAXVAC has been manufactured with the greatest care, and we hope that you will be happy with the MV1100 you have just purchased. However, if it does not fully comply with your expectations, please contact your supplier.

The MAXVAC brand was born in Switzerland to provide maximum performance equipment to deal with dust management and provide environmental cleaning solutions.

The MAXVAC team is passionate about providing the most environmentally and ecologically acceptable cleaning solutions to promote clean and healthy environments in the home town and workplace.

The MV1100 was specifically designed for the industry. This machine is suitable for domestic or collective use, e.g. in hotels, schools, hospitals, factories, shops, offices and in residences, domestic or commercial.

We are committed to continuous effective improvement in the battle against fine dust.

For more information on our range, please visit www.max-vac.com



CONGRATULATIONS

Congratulations on your purchase, you have obtained a state-of-the-art steam sweeper system. We hope that you will enjoy your purchase for years to come.

Read ALL instructions carefully before using this product.

FOR YOUR RECORDS

Please record the model and serial number below, for easy reference, in case of loss or theft. These numbers are located on the back panel of your air purification unit. Space is also provided for other relevant information.

Model number

Serial Number

Date of Purchase

Purchased From



SAFETY PRECAUTIONS

The Manufacturer reserves the right to update and improve its production without the duty to modify the previously sold machines. Each machine is tested in our factory before being delivered.

The function of this machine is only "sweeper" therefore the Manufacturer refuses all responsibility inherent in a different use from the one set by the Manufacturer.

The user and other people are not allowed to modify, alterate, change, etc. Its products. The transgressor will be responsible for all the risks and damages caused by improper and dangerous tampering.

It's absolutely necessary to observe carefully the safety measures of UE directives and national laws which are in force to protect the safety and health of the workers.

They are the best prerogative for a better use and a warranty against injuries.

Don't use the sweeper without right safety devices (check always their functionality).

The opening of the battery cover, must be done with the motor/engine turned off and with the starting key removed. Don't touch the moving parts of the machine while it's operating. If repair is needed first turn off the sweeper. If you hear strange sounds coming from the machine turn it off and try to figure out the cause.

While using the machine do not make dangerous manouvers for you and other people. Keep foreign people away from your work. The maintenance must be done by authorized personnel. Always use original spare parts.



WARRANTY

The MAXVAC MV1100 is supplied with a 12 month warranty on material and manufacturing defects. Keep (or a copy of) your receipt in order to be able to submit the correct purchase date.

Make sure you have always this user's manual in your hands. It's very important for the user to read this manual this to make sure he understands the safety rules and the maintenance of this machine, to make it efficient and durable at all times.

However, the instruction and safety measures contained in this manual don't substitute, in any case, the safety measures existing in the country where the sweeper is used. The manufacturer declines all the responsibility for plants above the machine.

The warranty does not include defects that result from normal wear, negligence, incorrect use, repairs without permission and defects caused by connecting the fume extractor to the wrong mains voltage.

Should you determine that your unit requires a service, please contact your local dealer.



SAFETY WARNING

When the sweeper is off, take away the key to prevent non authorized people using the machine. Park the sweeper on a flat surface and enable the parking brake. If you want to transport the machine, it 's required to fix it in proper way. The waste recovered in the tank has to be treated according to the national law. Do not use this machine to recover toxicant or inflammables.

The sweeper has to be used only by skilled and authorized workers. For safety reasons and prevent damage or injury to people, the worker has to be skilled to operate the sweeper in the best way. The worker has not to use the machine if under influence of drugs, alcohol etc. And he has always to respect the security measures. The Customer is directly responsible for the machine's operator. Before switching on the machine make sure all is in perfect condition and all the safety devices are placed in the right way. While in use keep away childrens and animals. Do not leave on the machine clothes, tools, etc.

To keep the machine in good conditions do not pick up ropes, iron wires or water. To pick up bulky materials and light materials such as leaves, paper, etc. Lift the front flap using the proper lever.



SPARE PARTS, CLEANING & DEMOLITION

To order spare parts, please give always this data: model and serial number of the machine, and also the part number of the item you need listed in the spare parts list.

The machine generates a sound pressure level (noise) in an industrial environment (warehouse/shop floor) which is less than below 85 dBA, a vibration on the operator's handle $<2,5\text{m/s}^2$, and is therefore absolutely harmless for the operator. However, in other surroundings, this level may be exceeded in which case the customer must provide appropriate protection (ear defenders) as well as notices to promote their use and periodic hearing examinations.

The cleaning operation must be done with the sweeper on a flat plane surface and with the parking brake engaged. Avoid aggressive products for cleaning and make sure wear protecting clothes and glasses.

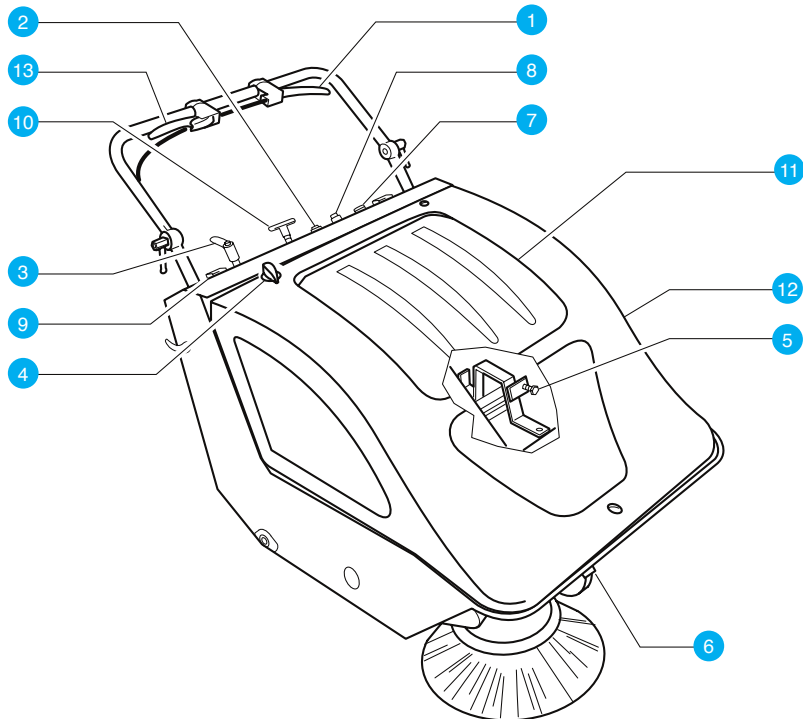
The demolition of the sweeper must be done dividing the materials that make up the sweeper itself, pay particular attention to dangerous elements for the environment such as oils etc.

These elements have to be treated by particular waste disposal plants. The demolition has to be done observing the national laws which regulate this matter.



CONTROL PANEL

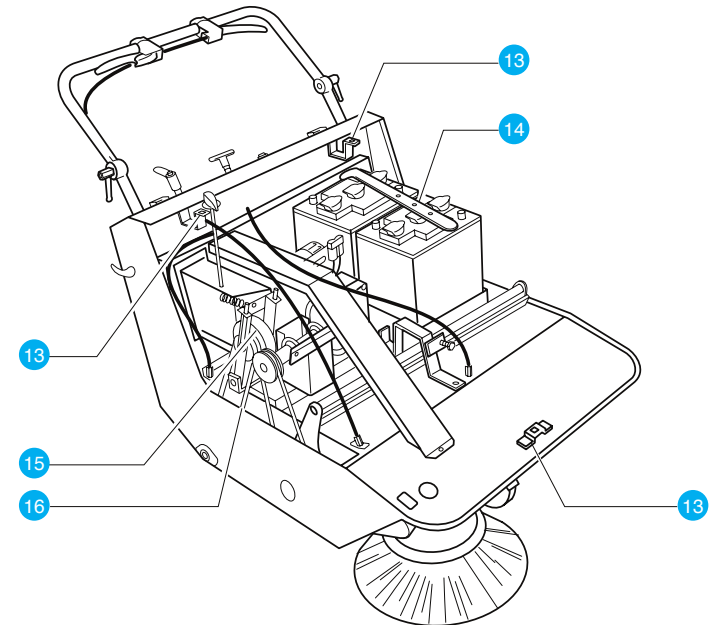
- | | | | |
|---|--|----|---------------------------|
| 1 | Traction lever | 9 | Closing for recovery tank |
| 2 | Knob for the filter shaker or button for the electric shaker | 10 | Front flap lever |
| 3 | Lever for raise or lower the side brush | 11 | Battery access cover |
| 4 | Knob for open or close the vacuum fan | 12 | Machine cover |
| 5 | screw for central cylinder brush adjustment | 13 | Parking brake |
| 6 | Front wheel parking brake | | |
| 7 | Keyswitch | | |
| 8 | Battery level control (only battery version) | | |



INSTRUCTIONS

Raise the cover 11 and take away the screws 13 of the bonnet 12.

Check the battery charge level and also the demineralized water level inside the battery. The battery stands in its position thanks to the rubber 14. Using the sweeper avoid to pick up ropes, iron wires, water, this to maintain always in good conditions the machine. Check that the side brush is lifted from the ground. Start the machine using the keyswitch 7. Now lower the side brush using the lever 3. The sweeper is tractioned on the rear wheels. Pulling the lever 1 (on the handle), the friction wheel 15 moves, it presses on the roller drag and due to the belt 16 finally we have the traction on the back wheels.





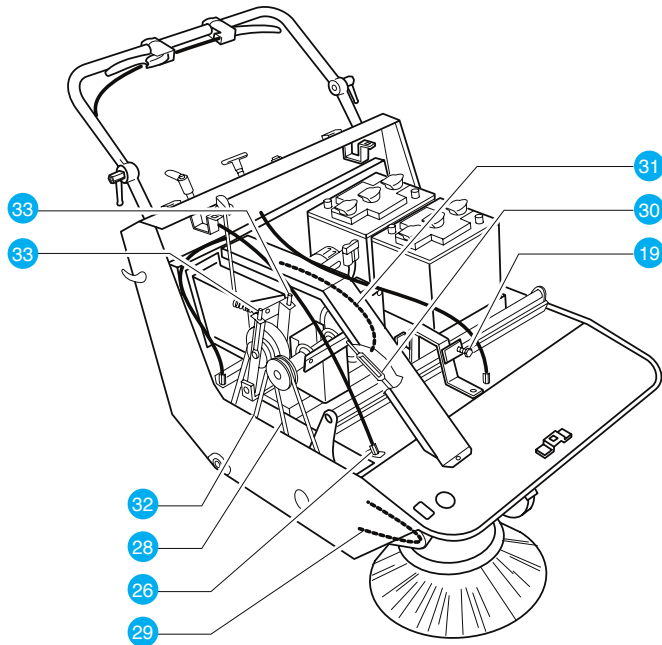
CENTRAL CYLINDER BRUSH AND SIDE BRUSH ADJUSTMENT

Only when the cylinder brush doesn't touch anymore the ground, the adjustment of it is needed.

This operation has to be done with the machine turned off and placed on flat plane surface. Insert the front parking brake, take away the starting key, raise the cover of the battery and disconnect the battery itself (battery version machine).

Unscrew the nut in position 19, rotate clockwise the screw and make sure the trace on the floor that the cylinder brush leaves is about 3cm.

Side brush adjustment: unscrew the screw in position 20 and regulate the register in position 26. This operation makes the brush get lower to the ground.



CENTRAL BRUSH CHANGING

The changing of the central cylinder brush must be done with the sweeper turned off and placed on a flat plane surface. Insert the front parking brake, take away the starting key, raise the battery cover 11, take away the bonnet 12 and remove the battery from its place (battery version machine). Remove the recover tank and raise the sweeper up from the front side.

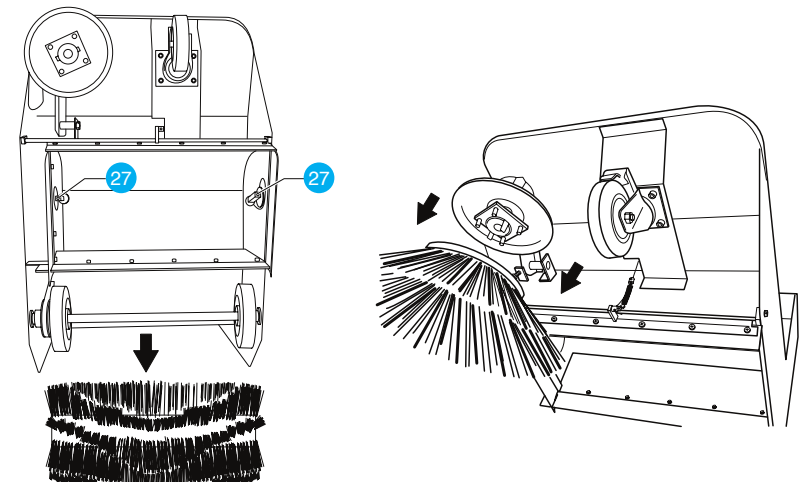
ATTENTION after this operation make sure that the machine is completely steady. Take away the screws in position 27 and remove the cylinder brush.

To change the side brush place the sweeper in the same steady position described above and proceed like this: pull with strenght the brush. Keep in mind that when the machine it is parked, the side brush should be always raised this to avoid its deformation.

The adjustment of the belt tension 28 and 29 is automatic because they're of elastic type.

The tension of the belt 31 is performed by the screw 30.

The adjustment of the V-belt 32 is done in this way: the nuts 33 adjust the pressure between the traction wheel and the traction roller.

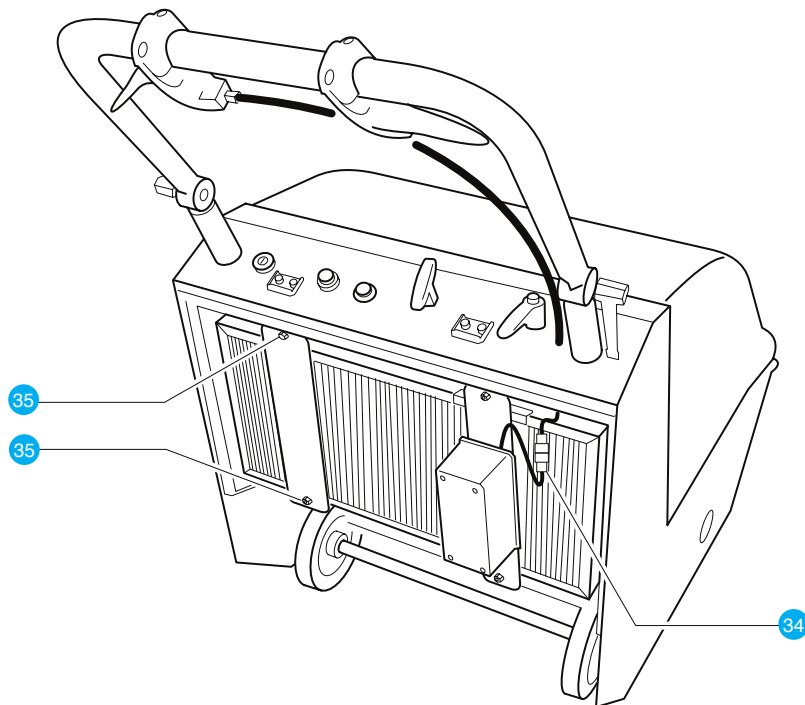




FILTER PANEL CLEANING

For a good dust suction and a good performant machine, keep always cleaned the filter.

For an accurate cleaning put the machine on a flat plane surface, insert the parking brake, remove the dust tank, disconnect the electric shaker 34 and remove the nuts 35 that fix the support. Take away the filter and shake it on a flat surface. Clean all the dust with a vacuum cleaner.



SPECIFICATIONS

Description	Spec
Floor area cleans	3700m ² /h
Cleaning width with central cylinder brush	700mm
Cleaning width with central cylinder brush and side brushes	880mm
Central cylinder brush diameter	ø 265/700mm
Side brush number	n/ø 1/180
Traction motor power	12v/400w S1
Panel filter surface	3m ²
Electric shaker	1x12v/90w S1
Dust recover tank	60 Lt
Dimensions (length x width x height)	1280 x 820 x 950mm
Weight without batteries	106Kg
Batteries (12V 157 Ah - 6V 240Ah)	1 (12v) / 2 (6v)
Autonomy	1,5 (157 Ah) 2,5 (240 Ah)



PARTS

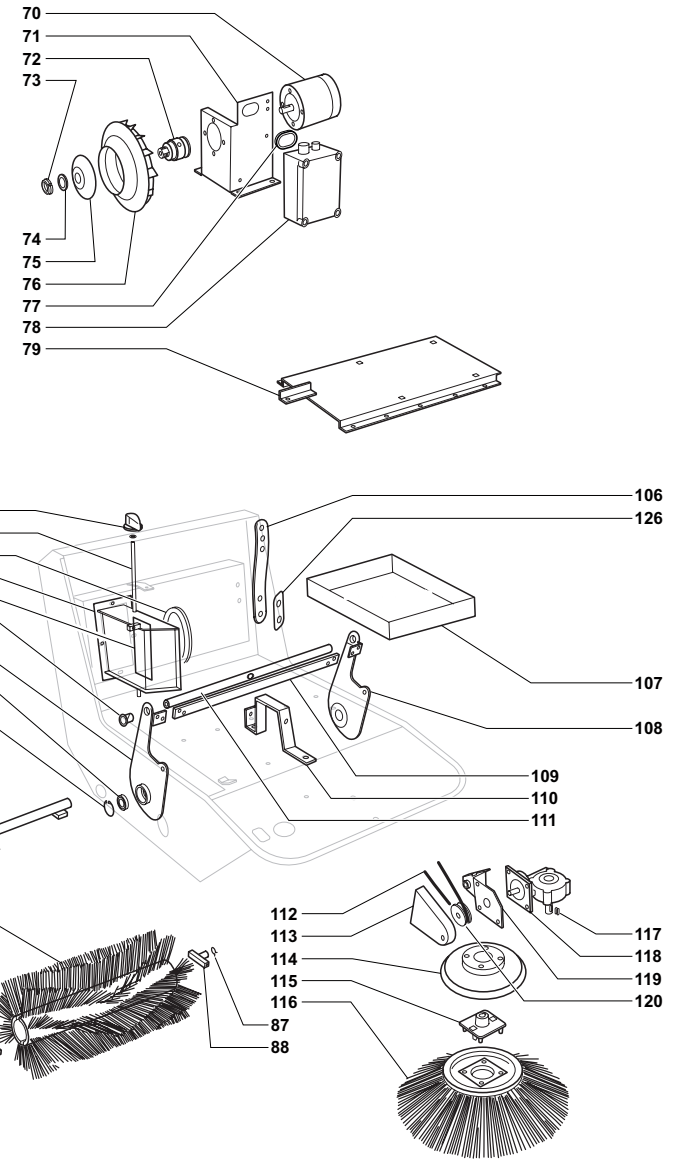
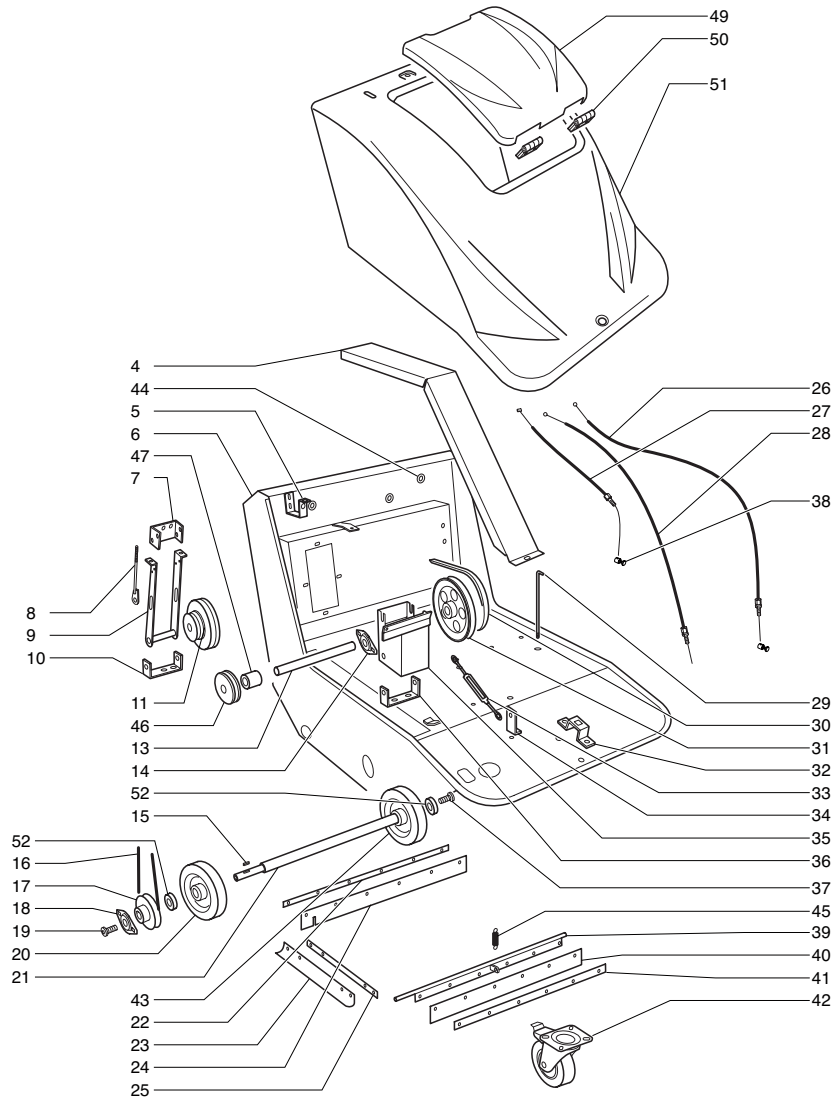
Pos	Code	Description	Pos	Code	Description
1			51	MV1100 051	COVER
2			52	MV1100 052	SPACER
3			70	MV1100 070	MOTOR
4	MV1100 004	CARTER	71	MV1100 071	SUPPORT
5	MV1100 005	YOKE	72	MV1100 072	PULLEY
6	MV1100 006	FRAME	73	MV1100 073	RING NUT
7	MV1100 007	YOKE	74	MV1100 074	WASHER
8	MV1100 008	TIE ROD	75	MV1100 075	DISC
9	MV1100 009	SUPPORT	76	MV1100 076	IMPELLOR
10	MV1100 010	SUPPORT	77	MV1100 077	RUBBER
11	MV1100 011	WHEEL	78	MV1100 078	BOX
12	MV1100 012	PULLEY	79	MV1100 079	PLATE
13	MV1100 013	SHAFT	80	MV1100 080	KNOB
14	MV1100 014	BEARING	81	MV1100 081	SEAL
15	MV1100 015	TANG	82	MV1100 082	CLOAK
16	MV1100 016	BELT	83	MV1100 083	BUSHING
17	MV1100 017	PULLEY	84	MV1100 084	RIGHT LEVER CYLINDER BRUSH
18	MV1100 014	BEARING	85	MV1100 085	BEARING
19	MV1100 019	SCREW	86	MV1100 086	SEEGER
20	MV1100 020	WHEEL	87	MV1100 087	SEEGER
21	MV1100 021	SHAFT	88	MV1100 088	LEFT STOP
22	MV1100 022	BACK STRIP	89	MV1100 089	CYLINDER BRUSH
23	MV1100 023	SIDE RUBBER	90	MV1100 090	RIGHT STOP
24	MV1100 024	BACK RUBBER	91	MV1100 091	BELT
25	MV1100 025	SIDE STRIP	92	MV1100 092	PULLEY
26	MV1100 026	FLAP CABLE	93	MV1100 093	SPACER
27	MV1100 027	CLUTCH CABLE	94	MV1100 094	MOUNTINGS
28	MV1100 028	BRUSH CABLE	95		
29	MV1100 029	TIE ROD	96		
30	MV1100 030	BELT	97		
31	MV1100 031	PULLEY	98		
32	MV1100 032	YOKE	99		
33	MV1100 033	TIE ROD	100		
34	MV1100 034	YOKE	101		
35	MV1100 035	SUPPORT	102		
36	MV1100 036	SUPPORT	103		
37	MV1100 037	SCREW	104		
38	MV1100 038	CLAMP	105		
39	MV1100 039	FRONT FLAP	106	MV1100 106	RUBBER
40	MV1100 040	FRONT RUBBER	107	MV1100 107	VAT
41	MV1100 041	FRONT STRIP	108	MV1100 108	LEFT LEVER CYL BRUSH
42	MV1100 042	SWIVEL WHEEL	109	MV1100 109	PLATE
43	MV1100 043	WHEEL	110	MV1100 110	SUPPORT
44	MV1100 044	RUBBER	111	MV1100 111	SHAFT
45	MV1100 045	SPRING	112	MV1100 112	BELT
46	MV1100 046	PULLEY	113	MV1100 113	COVER
47	MV1100 047	PULLEY	114	MV1100 114	COVER
48			115	MV1100 115	JOINT
49	MV1100 049	COVER	116	MV1100 116	BRUSH
50	MV1100 050	HINGE	117	MV1100 117	TANG



Pos	Code	Description	Pos	Code	Description
118	MV1100 118	REDUCER	302	MV1100 302	BUTTON
119	MV1100 119	SUPPORT	303	MV1100 303	FUSE SOCKET
120	MV1100 120	PULLEY	304	MV1100 304	FUSE
121			305	MV1100 305	POWER SWITCH
122	MV1100 122	BOX	306	MV1100 306	FUSE SOCKET
123	MV1100 123	BRAKE CABLE	307	MV1100 307	FUSE
124	MV1100 124	BRAKE SHAFT	308	MV1100 308	PLUG
125			309	MV1100 309	HANDLE
126	MV1100 126	SUPPORT	310	MV1100 310	BATTERY 140Ah
127	MV1100 127	SHUTTER	311	MV1100 311	SEPARATOR
128	MV1100 128	ROD	312	MV1100 312	DRIVE MOTOR
190	MV1100 190	LEVER SUPPORT	313	MV1100 313	SHAKER MOTOR
191	MV1100 191	HANDLE			
192	MV1100 192	BRAKE LEVER			
193	MV1100 193	ARTICULATION			
194	MV1100 194	SUPPORT			
195	MV1100 195	KEY SWITCH			
196	MV1100 196	BATTERY CHARGE LEVEL			
197	MV1100 197	BUTTON			
198	MV1100 198	SUPPORT			
199	MV1100 199	FILTER			
200					
201					
202					
203					
204					
205	MV1100 205	WHEEL			
206					
207	MV1100 207	HOOK			
208	MV1100 208	HANDLE			
209	MV1100 209	DUST TANK			
210	MV1100 210	HANDLE			
211	MV1100 211	HANDLE			
212	MV1100 212	SUPPORT			
213	MV1100 213	SUPPORT			
214	MV1100 214	HANDLE			
215	MV1100 215	RUBBER			
216	MV1100 216	TIE ROD			
217					
218					
219					
220					
221	MV1100 221	BRAKE LEVER			
222					
223	MV1100 223	SHAKER MOTOR			
224	MV1100 224	SUPPORT			
225	MV1100 225	PLATE			
300	MV1100 300	KEY SWITCH			
301	MV1100 301	BATTERY CHARGE LEVER			

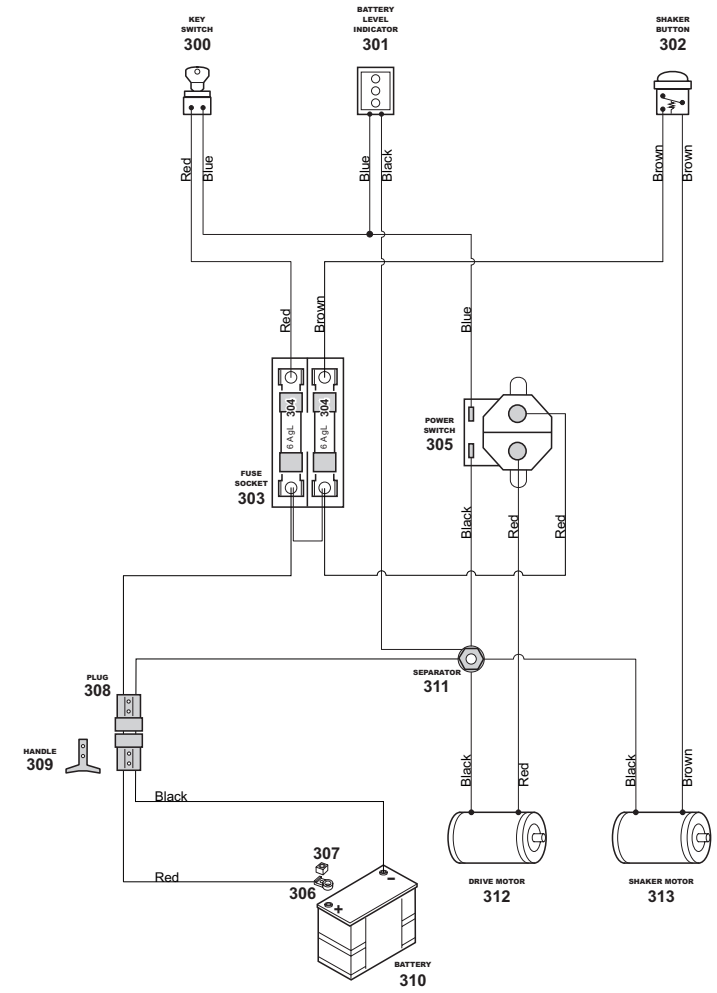
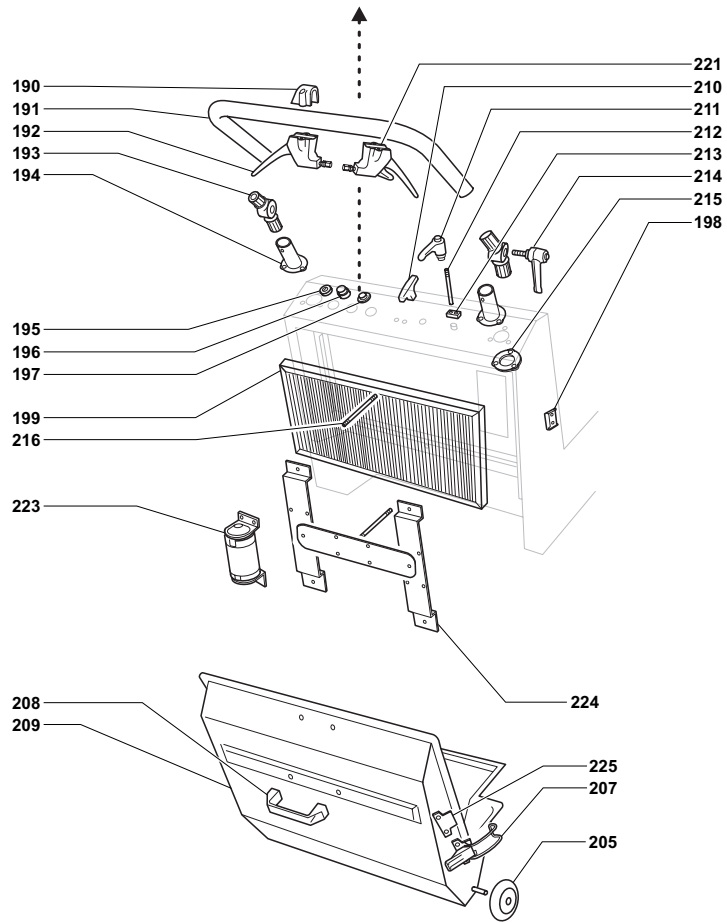


PARTS





PARTS





MALFUNCTIONS

Problem	Causes	Solution
Traces of dust, dirty and objects not recovered	Cylinder brush consumed.	Adjust or change the brush
	Ropes or iron wires stucked around brush/es	Remove
Dust comes out from the sides of the machine	Filter is blocked	Clean the filter
	Side ribbers consumed	Change the rubbers
	The suction duct is closed	Open the suction duct
Dust comes out from the fan	Filter is broken	Change the filter
Dust comes out from the front of the machine	Front rubber of the flap is consumed	Change the rubber
Battery is flat	Demineralized water is missing	Add demineralized water
	Short circuit in the battery	Change the battery
	Battery is not charged well	Charge the battery
	The pressure on the cylinder brush is too high	Adjust the cylinder brush pressure
Problems with the engine	See the enclosed engine manual	See the enclosed engine manual

COMMON MAINTENANCE

The sweeper must be always in good conditions for what concerns the safety devices.

Occasionally, check the health status of the machine following the periodical maintenance. Every year, inspect the machine in order to establish the security of the machine itslef.

For every replacement on the machine use always original spare parts.

The customer is directly responsible for qualified technicians who repair, maintain etc. The sweeper.



COMMON MAINTENANCE

Check	10h	40h	150h	1000h
Demineralized water in the battery	**			
Filter cleaning	**			
Filter change				**
Belts tension		**		
Electric motor carbons			**	
Brushes conditions		**		
Engine oil level control	**			
Engine oil change		**		

The maintenance of the battery must be done with the sweeper switched off on a flat plane surface, with the parking brake inserted and without the starting key.

Raise the battery cover, take away the screws that fix the bonnet. Remove the bonnet and then disconnect the battery.

Never charge the battery outdoor, but only in covered and aired places.

Check the demineralized water level, and if necessary, add distilled water. Use anti-static gloves to clean and dry the battery. Do not leave any tool or metal object on the battery. Do not smoke or move fires near the battery, above all during its charging. Pay attention to the battery liquid, it's corrosive, and to the gases, which are explosive. It's advisable to wear protective glasses/ clothes when working on the battery.

Make sure the polarity on the battery is ok. Spread a layer of vaseline on the battery terminals. Do not cause short circuit, do not take current from the battery with provisory methods. Once a month check the charging level even if the machine has not been used, the battery must be charged. If the battery doesn't charge, please see the trouble shooting page.



Ensure that the main power key switch is in the OFF position and that the batteries are disconnected before carrying out any maintenance and/or changing the brushes.

Maintenance procedures must be carried out by authorised personnel. Do not carry out any unsafe or temporary repairs or use non-original spare parts.

Regularly check the wear and deterioration of the materials and, if necessary, call out your regular supplier.

DO NOT SMOKE, LIGHT FLAMES OR MAKE SPARKS.

Ensure that the charger is switched off before disconnecting it from the batteries. Recharge the batteries in a well ventilated area and with the cover fixed in the open position.

Do not draw current from the batteries with make-shift connectors, clips or contacts.

Park the cleaner on a flat and level floor and engage the parking brake.

If the cleaner is left unattended remove the key from the main power switch.

Do not leave the cleaner unattended particularly if children are present. Do not use or install the cleaner in places where inflammable gases or liquids are present. Do not use inflammable liquids or chemicals with this cleaner.

Ensure that the instruction manual and warnings are always to hand and are legible. Replace any torn or missing pages. This machine must only be used on flat and level surfaces.



WARNING
DISPOSAL OF BATTERIES MUST BE EXECUTED IN ACCORDANCE
'WITH THE LAWS OF THE COUNTRY IN WHICH THE MACHINE
WORKS.'



EU - DECLARATION OF CONFORMITY

Sweeper

Models: MV1100

MAXVAC, hereby declares the above stated models comply with the following or relevant part thereof:

The manufacturer declares under its sole responsibility that the appliance, to which this declaration refers, complies with the essential safety requirements of the following European Directives:
Directive 2006/95 EC

Directive of the European Parliament and of the Council of 12 December 2006, on the approximation of the laws of the Member States relating to electrical equipment. Directive 2004/108/EC

Directive of the European Parliament and of the Council of 15 December 2004 on the approximation of the laws of the Member States relating to electromagnetic compatibility and repealing Directive 89/336/EEC

Manufacturer: MAXVAC, Schweiz.

Date: 1st September 2020.



MAXVAC



Mülibodenstrasse 3
CH-8172 Niederglatt
Zürich, Schweiz



+41(0) 43 411 4195



max-vac.com

ver. 1.1