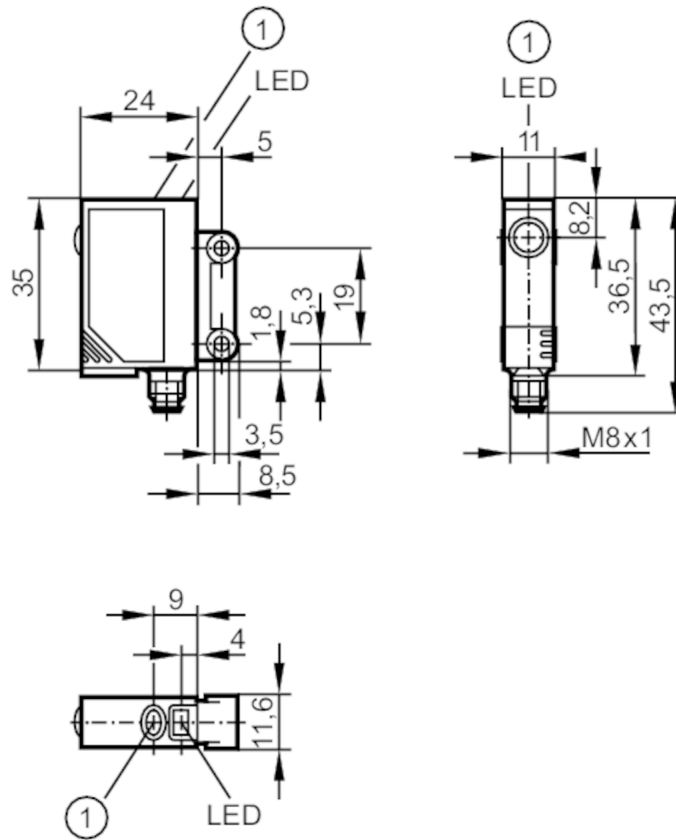


OJ5130



Through-beam sensor transmitter

OJS-00KG/SO/IAS



1 pushbutton without function



Product characteristics

Type of light	red light
Housing	rectangular
Dimensions [mm]	35 x 11 x 24

Application

Function principle	Through-beam sensor
--------------------	---------------------

Electrical data

Operating voltage [V]	10...30 DC
Current consumption [mA]	< 19
Protection class	III
Reverse polarity protection	yes
Type of light	red light
Wave length [nm]	660

Outputs

Overload protection	yes
---------------------	-----

OJ5130



Through-beam sensor transmitter

OJS-00KG/SO/AS

Detection zone	
Transmitter / receiver	transmitter
Range [m]	< 10
Max. light spot diameter [mm]	1000
Light spot dimensions refer to	at maximum range

Operating conditions	
Ambient temperature [°C]	-25...60
Protection	IP 67

Tests / approvals	
EMC	EN 60947-5-2
MTTF [years]	1764

Mechanical data	
Weight [g]	39.4
Housing	rectangular
Dimensions [mm]	35 x 11 x 24
Materials	housing: ABS; LED window: SEPS; pushbutton: SEPS
Lens material	glass
Lens alignment	side lens

Displays / operating elements	
Display	operation 1 x LED, green

Accessories	
Accessories (supplied)	screws: 2 x spring washers: 2 x Nuts: 2 x

Remarks	
Remarks	operating voltage "supply class 2" according to cULus
Pack quantity	1 pcs.

Electrical connection

Connector: 1 x M8



OJ5130



Through-beam sensor transmitter

OJS-00KG/SO/AS

Connection

