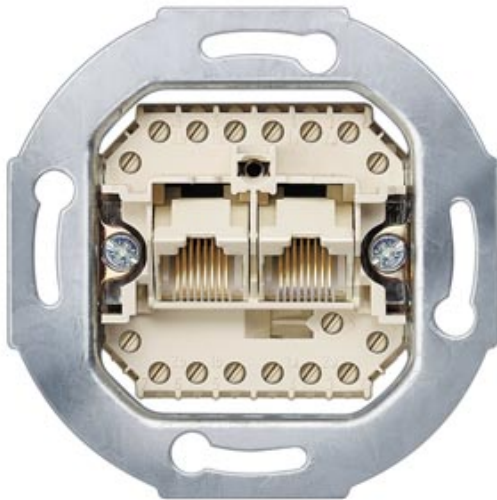


INSERT F.UAE OUTLET BOX CAT.3-8/8 FOR DELTA PROGRAMS



<b>Model</b>		
Type of composition		basic element
<b>General technical data</b>		
Mounting type		fixing with claw and screw
Surface processing		others
Product feature / Printed marking		No
Material		others
<b>Protection class</b>		
Protection class IP		IP20
<b>Suitability</b>		
Suitability for operation		universal connection unit/ISDN connection unit
<b>Appearance</b>		
Color		miscellaneous
<b>Product details</b>		
Product feature		
• Luster terminal		No
• Dust cover		No
Product component		
• Labeling field		No
• Hinged lid		No
• strain relief		No
Product property		
• halogen-free		Yes

• transparent

No

## Mechanical Design

**Mounting type**

flush mounted

**Material**

others

**General Product Approval**

**Declaration of  
Conformity**

**Test Certificates**



GOST



EG-Konf.

[other](#)

## Further information

**Information- and Downloadcenter (Catalogs, Brochures,...)**

<http://www.siemens.com/lowvoltage/catalogs>

**Industry Mall (Online ordering system)**

<https://eb.automation.siemens.com/mall/en/WW/Catalog/Product/5TG2406>

**Service&Support (Manuals, Certificates, Characteristics, FAQs,...)**

<http://support.automation.siemens.com/WW/view/en/5TG2406/all>

**Image database (product images, 2D dimension drawings, 3D models, device circuit diagrams, ...)**

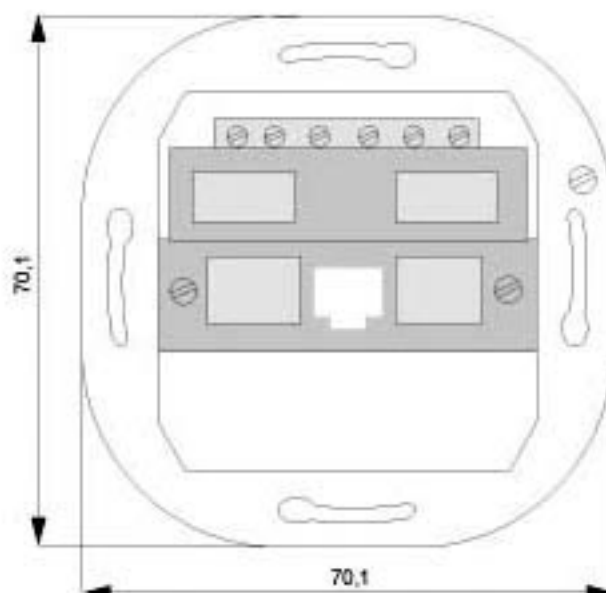
[http://www.automation.siemens.com/bilddb/cax\\_en.aspx?mlfb=5TG2406](http://www.automation.siemens.com/bilddb/cax_en.aspx?mlfb=5TG2406)

**CAX-Online-Generator**

<http://www.siemens.com/cax>

**Tender specifications**

<http://ausschreibungstexte.siemens.com/tiplv>



last modified:

11.03.2015