

## Rear Eye Mountings with Spherical Bearing

### Materials:

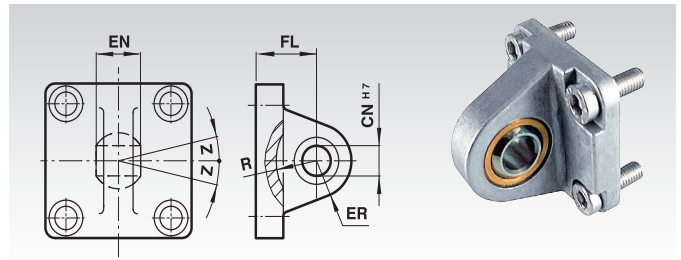
Mounting: Aluminium, die-cast.

Screws: Steel, zinc-plated

Inner ring: Roller bearing steel, hardened

Outer ring: Steel.

Mounting element at the end cover.



Ordering Details: e.g.: Product No. 810 012 32, Rear Eye Mounting with Spherical Bearing for Cylinder Ø 32 mm

Product No.	Cyl. Ø mm	CN <sup>H7</sup> mm	EN mm	ER mm	FL mm	R mm	Z Degrees	Weight g
810 012 32	32	10	14	16	22	14,5	13°	170
810 012 40	40	12	16	19	25	18	13°	250
810 012 50	50	16	21	21	27	19	13°	400
810 012 63	63	16	21	24	32	24	15°	550
810 012 80	80	20	25	28	36	24	15°	900

## Rear Clevis Mountings, Wide Clevis

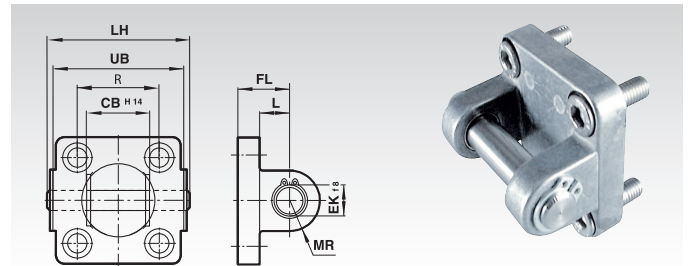
### Materials:

Mounting: Aluminium, die-cast.

Screws: Steel, zinc-plated

Bolts: Stainless Steel.

Mounting element at the end cover.



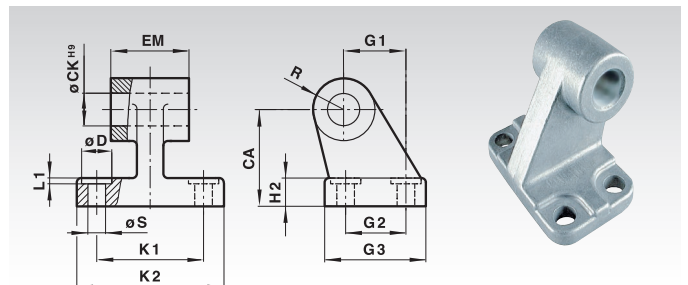
Ordering Details: e.g.: Product No. 810 007 32, Rear Clevis Mounting Made from Aluminium for Cylinder Ø 32 mm

Product No.	Cyl. Ø mm	CB <sup>H14</sup> mm	EK <sup>B8</sup> mm	FL mm	L mm	LH mm	MR mm	UB mm	R mm	Weight g
810 007 32	32	26	10	22	13	52	9	32,5	45	110
810 007 40	40	28	12	25	16	60	12	38	52	160
810 007 50	50	32	12	27	17	68	12	46,5	60	220
810 007 63	63	40	16	32	22	79	15	56,5	70	340
810 007 80	80	50	16	36	22	99	15	72	90	540

## Bracket Hinge Mountings, Rigid, Wide Design (Aluminium), Mating Piece for Clevis Mounting

### Material:

Aluminium, die-cast.



Ordering Details: e.g.: Product No. 810 010 32, Bracket Hinge Mounting, Rigid, Wide Design, for Cylinder Ø 32 mm

Product No.	Cyl. Ø mm	CA mm	CK <sup>H7</sup> mm	Ø D mm	EM mm	G1 mm	G2 mm	G3 mm	H2 mm	K1 mm	K2 mm	L1 mm	R mm	Ø S mm	Z Degrees	Weight g
810 010 32	32	32	10	11	26	21	18	31	8	38	51	1,6	10	6,6	13°	150
810 010 40	40	36	12	11	28	24	22	35	10	41	54	1,6	11	6,6	13°	200
810 010 50	50	45	12	15	32	33	30	45	12	50	65	1,6	13	9	13°	480
810 010 63	63	50	16	15	40	37	35	50	12	52	67	1,6	15	9	15°	500
810 010 80	80	63	16	18	50	47	40	60	14	66	86	2,5	15	11	15°	750