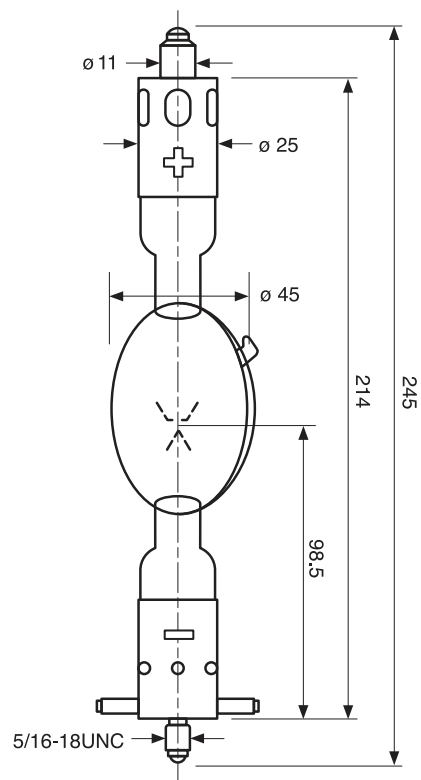


UXL-16SB

Technical data

Rated Input Power	W	1430	
Rated Current	A	65	
Operating Current Range	A	45—70	
Rated Voltage	V	22	
Cold Arc Gap	mm	4	
Lamp Length(L1)	mm	245	
Lamp Length(L2)	mm	214	
LCL(L3)	mm	98.5	
Bulb Diameter	mm	ø 45	
Base Diameter	mm	ø 25	
Cathode Pin Diameter	mm	5/16-18UNC	
Anode Pin Diameter	mm	ø 11	
Cable Length	mm	—	
Operating Position	Vertical	°	±15
	Horizontal	°	±15
Base Surface Temperature	°C	max. 200	
Forced Air Cooling	m/s	4 to 6	



Memo