

COMBINATION D-SUB MIT SIGNALKONTAKTEN

Lötstift – gewinkelt – 9,4 mm – gedrehte Kontakte – Metallwinkel

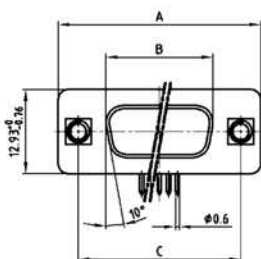


RoHS compliant – CSA listed, File No.: LR 115000-1 – UL listed, File No.: E 228329

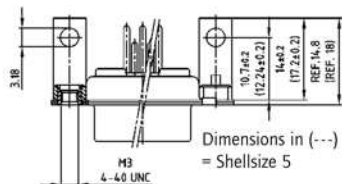
BESCHREIBUNG

- Montagearten:
 - Befestigungswinkel und Innengewinde 4-40 UNC
 - Befestigungswinkel mit Bolzen 4-40 UNC
 - Befestigungswinkel, Masseclip und Innengewinde 4-40 UNC
 - Befestigungswinkel, Masseclip und Bolzen 4-40 UNC
- Gewindeausführung M3 auf Anfrage lieferbar
- Gütestufe 3 (auch in Gütestufe 1 lieferbar)
- Gehäuse: Stahl verzinkt, optional Messing verzinkt oder Edelstahl

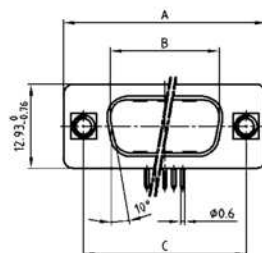
BUCHSENLEISTE



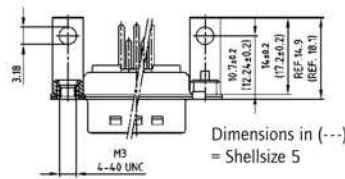
Shellsize	A -0.76	B -0.25	C
1	31.19	16.46	25.00 ^{+0.12} / _{-0.13}
2	39.52	24.79	33.30 ^{+0.15} / _{-0.10}
3	53.42	38.50	47.04 ^{+0.13} / _{-0.10}
4	69.70	54.96	63.50 ^{+0.13} / _{-0.11}
5	67.31	52.55	61.10 ^{+0.14} / _{-0.11}



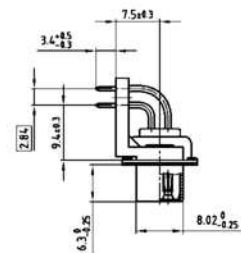
STIFTLISTE



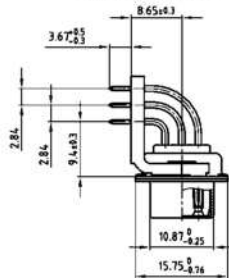
Shellsize	A -0.76	B +0.25	C	D -0.30
1	31.19	16.79	25.00 ^{+0.12} / _{-0.13}	6.12
2	39.52	25.12	33.30 ^{+0.15} / _{-0.10}	6.12
3	53.42	38.84	47.04 ^{+0.13} / _{-0.10}	5.99
4	69.70	55.30	63.50 ^{+0.13} / _{-0.11}	5.99
5	67.31	52.68	61.10 ^{+0.14} / _{-0.11}	5.99



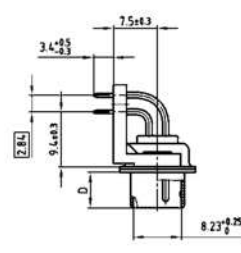
Gehäusegröße 1-4



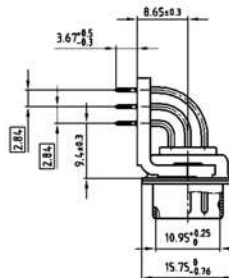
Gehäusegröße 5



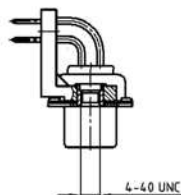
Gehäusegröße 1-4



Gehäusegröße 5



BESTELLDATEN



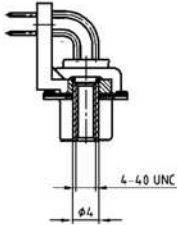
BUCHSENLEISTE		
Bauform	Montageart	Bestellnummer
5W1	Innengewinde 4-40 UNC	3005W1SAU99G20X
7W2	Innengewinde 4-40 UNC	3007W2SAU99G20X
11W1	Innengewinde 4-40 UNC	3011W1SAU99G20X
9W4	Innengewinde 4-40 UNC	3009W4SAU99G20X
13W3	Innengewinde 4-40 UNC	3013W3SAU99G20X
17W2	Innengewinde 4-40 UNC	3017W2SAU99G20X
21W1	Innengewinde 4-40 UNC	3021W1SAU99G20X
13W6	Innengewinde 4-40 UNC	3013W6SAU99G20X
17W5	Innengewinde 4-40 UNC	3017W5SAU99G20X
21WA4	Innengewinde 4-40 UNC	321WA4SAU99G20X
25W3	Innengewinde 4-40 UNC	3025W3SAU99G20X
27W2	Innengewinde 4-40 UNC	3027W2SAU99G20X
24W7	Innengewinde 4-40 UNC	3024W7SAU99G20X
36W4	Innengewinde 4-40 UNC	3036W4SAU99G20X
43W2	Innengewinde 4-40 UNC	3043W2SAU99G20X
47W1	Innengewinde 4-40 UNC	3047W1SAU99G20X

STIFTLISTE		
Bauform	Montageart	Bestellnummer
5W1	Innengewinde 4-40 UNC	3005W1PAU99G20X
7W2	Innengewinde 4-40 UNC	3007W2PAU99G20X
11W1	Innengewinde 4-40 UNC	3011W1PAU99G20X
9W4	Innengewinde 4-40 UNC	3009W4PAU99G20X
13W3	Innengewinde 4-40 UNC	3013W3PAU99G20X
17W2	Innengewinde 4-40 UNC	3017W2PAU99G20X
21W1	Innengewinde 4-40 UNC	3021W1PAU99G20X
13W6	Innengewinde 4-40 UNC	3013W6PAU99G20X
17W5	Innengewinde 4-40 UNC	3017W5PAU99G20X
21WA4	Innengewinde 4-40 UNC	321WA4PAU99G20X
25W3	Innengewinde 4-40 UNC	3025W3PAU99G20X
27W2	Innengewinde 4-40 UNC	3027W2PAU99G20X
24W7	Innengewinde 4-40 UNC	3024W7PAU99G20X
36W4	Innengewinde 4-40 UNC	3036W4PAU99G20X
43W2	Innengewinde 4-40 UNC	3043W2PAU99G20X
47W1	Innengewinde 4-40 UNC	3047W1PAU99G20X

COMBINATION D-SUB – MONTAGEARTEN

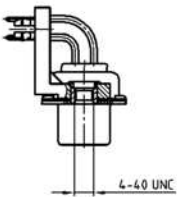
Lötstift – gewinkelt – 9,4 mm – gedrehte Kontakte – Metallwinkel

BESTELLDATEN



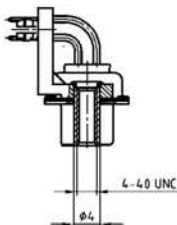
BUCHSENLEISTE		
Bauform	Montageart	Bestellnummer
5W1	Bolzen 4-40 UNC	3005W1SAU99H20X
7W2	Bolzen 4-40 UNC	3007W2SAU99H20X
11W1	Bolzen 4-40 UNC	3011W1SAU99H20X
9W4	Bolzen 4-40 UNC	3009W4SAU99H20X
13W3	Bolzen 4-40 UNC	3013W3SAU99H20X
17W2	Bolzen 4-40 UNC	3017W2SAU99H20X
21W1	Bolzen 4-40 UNC	3021W1SAU99H20X
13W6	Bolzen 4-40 UNC	3013W6SAU99H20X
17W5	Bolzen 4-40 UNC	3017W5SAU99H20X
21WA4	Bolzen 4-40 UNC	321WA4SAU99H20X
25W3	Bolzen 4-40 UNC	3025W3SAU99H20X
27W2	Bolzen 4-40 UNC	3027W2SAU99H20X
24W7	Bolzen 4-40 UNC	3024W7SAU99H20X
36W4	Bolzen 4-40 UNC	3036W4SAU99H20X
43W2	Bolzen 4-40 UNC	3043W2SAU99H20X
47W1	Bolzen 4-40 UNC	3047W1SAU99H20X

STIFBLEISTE		
Bauform	Montageart	Bestellnummer
5W1	Bolzen 4-40 UNC	3005W1PAU99H20X
7W2	Bolzen 4-40 UNC	3007W2PAU99H20X
11W1	Bolzen 4-40 UNC	3011W1PAU99H20X
9W4	Bolzen 4-40 UNC	3009W4PAU99H20X
13W3	Bolzen 4-40 UNC	3013W3PAU99H20X
17W2	Bolzen 4-40 UNC	3017W2PAU99H20X
21W1	Bolzen 4-40 UNC	3021W1PAU99H20X
13W6	Bolzen 4-40 UNC	3013W6PAU99H20X
17W5	Bolzen 4-40 UNC	3017W5PAU99H20X
21WA4	Bolzen 4-40 UNC	321WA4PAU99H20X
25W3	Bolzen 4-40 UNC	3025W3PAU99H20X
27W2	Bolzen 4-40 UNC	3027W2PAU99H20X
24W7	Bolzen 4-40 UNC	3024W7PAU99H20X
36W4	Bolzen 4-40 UNC	3036W4PAU99H20X
43W2	Bolzen 4-40 UNC	3043W2PAU99H20X
47W1	Bolzen 4-40 UNC	3047W1PAU99H20X



BUCHSENLEISTE		
Bauform	Montageart	Bestellnummer
5W1	Masseclip, Innengewinde 4-40 UNC	3005W1SAU99G40X
7W2	Masseclip, Innengewinde 4-40 UNC	3007W2SAU99G40X
11W1	Masseclip, Innengewinde 4-40 UNC	3011W1SAU99G40X
9W4	Masseclip, Innengewinde 4-40 UNC	3009W4SAU99G40X
13W3	Masseclip, Innengewinde 4-40 UNC	3013W3SAU99G40X
17W2	Masseclip, Innengewinde 4-40 UNC	3017W2SAU99G40X
21W1	Masseclip, Innengewinde 4-40 UNC	3021W1SAU99G40X
13W6	Masseclip, Innengewinde 4-40 UNC	3013W6SAU99G40X
17W5	Masseclip, Innengewinde 4-40 UNC	3017W5SAU99G40X
21WA4	Masseclip, Innengewinde 4-40 UNC	321WA4SAU99G40X
25W3	Masseclip, Innengewinde 4-40 UNC	3025W3SAU99G40X
27W2	Masseclip, Innengewinde 4-40 UNC	3027W2SAU99G40X
24W7	Masseclip, Innengewinde 4-40 UNC	3024W7SAU99G40X
36W4	Masseclip, Innengewinde 4-40 UNC	3036W4SAU99G40X
43W2	Masseclip, Innengewinde 4-40 UNC	3043W2SAU99G40X
47W1	Masseclip, Innengewinde 4-40 UNC	3047W1SAU99G40X

STIFBLEISTE		
Bauform	Montageart	Bestellnummer
5W1	Masseclip, Innengewinde 4-40 UNC	3005W1PAU99G40X
7W2	Masseclip, Innengewinde 4-40 UNC	3007W2PAU99G40X
11W1	Masseclip, Innengewinde 4-40 UNC	3011W1PAU99G40X
9W4	Masseclip, Innengewinde 4-40 UNC	3009W4PAU99G40X
13W3	Masseclip, Innengewinde 4-40 UNC	3013W3PAU99G40X
17W2	Masseclip, Innengewinde 4-40 UNC	3017W2PAU99G40X
21W1	Masseclip, Innengewinde 4-40 UNC	3021W1PAU99G40X
13W6	Masseclip, Innengewinde 4-40 UNC	3013W6PAU99G40X
17W5	Masseclip, Innengewinde 4-40 UNC	3017W5PAU99G40X
21WA4	Masseclip, Innengewinde 4-40 UNC	321WA4PAU99G40X
25W3	Masseclip, Innengewinde 4-40 UNC	3025W3PAU99G40X
27W2	Masseclip, Innengewinde 4-40 UNC	3027W2PAU99G40X
24W7	Masseclip, Innengewinde 4-40 UNC	3024W7PAU99G40X
36W4	Masseclip, Innengewinde 4-40 UNC	3036W4PAU99G40X
43W2	Masseclip, Innengewinde 4-40 UNC	3043W2PAU99G40X
47W1	Masseclip, Innengewinde 4-40 UNC	3047W1PAU99G40X



BUCHSENLEISTE		
Bauform	Montageart	Bestellnummer
5W1	Masseclip, Bolzen 4-40 UNC	3005W1SAU99H40X
7W2	Masseclip, Bolzen 4-40 UNC	3007W2SAU99H40X
11W1	Masseclip, Bolzen 4-40 UNC	3011W1SAU99H40X
9W4	Masseclip, Bolzen 4-40 UNC	3009W4SAU99H40X
13W3	Masseclip, Bolzen 4-40 UNC	3013W3SAU99H40X
17W2	Masseclip, Bolzen 4-40 UNC	3017W2SAU99H40X
21W1	Masseclip, Bolzen 4-40 UNC	3021W1SAU99H40X
13W6	Masseclip, Bolzen 4-40 UNC	3013W6SAU99H40X
17W5	Masseclip, Bolzen 4-40 UNC	3017W5SAU99H40X
21WA4	Masseclip, Bolzen 4-40 UNC	321WA4SAU99H40X
25W3	Masseclip, Bolzen 4-40 UNC	3025W3SAU99H40X
27W2	Masseclip, Bolzen 4-40 UNC	3027W2SAU99H40X
24W7	Masseclip, Bolzen 4-40 UNC	3024W7SAU99H40X
36W4	Masseclip, Bolzen 4-40 UNC	3036W4SAU99H40X
43W2	Masseclip, Bolzen 4-40 UNC	3043W2SAU99H40X
47W1	Masseclip, Bolzen 4-40 UNC	3047W1SAU99H40X

STIFBLEISTE		
Bauform	Montageart	Bestellnummer
5W1	Masseclip, Bolzen 4-40 UNC	3005W1PAU99H40X
7W2	Masseclip, Bolzen 4-40 UNC	3007W2PAU99H40X
11W1	Masseclip, Bolzen 4-40 UNC	3011W1PAU99H40X
9W4	Masseclip, Bolzen 4-40 UNC	3009W4PAU99H40X
13W3	Masseclip, Bolzen 4-40 UNC	3013W3PAU99H40X
17W2	Masseclip, Bolzen 4-40 UNC	3017W2PAU99H40X
21W1	Masseclip, Bolzen 4-40 UNC	3021W1PAU99H40X
13W6	Masseclip, Bolzen 4-40 UNC	3013W6PAU99H40X
17W5	Masseclip, Bolzen 4-40 UNC	3017W5PAU99H40X
21WA4	Masseclip, Bolzen 4-40 UNC	321WA4PAU99H40X
25W3	Masseclip, Bolzen 4-40 UNC	3025W3PAU99H40X
27W2	Masseclip, Bolzen 4-40 UNC	3027W2PAU99H40X
24W7	Masseclip, Bolzen 4-40 UNC	3024W7PAU99H40X
36W4	Masseclip, Bolzen 4-40 UNC	3036W4PAU99H40X
43W2	Masseclip, Bolzen 4-40 UNC	3043W2PAU99H40X
47W1	Masseclip, Bolzen 4-40 UNC	3047W1PAU99H40X

Masseclip (Snap In) für Lochdurchmesser 3,1 ± 0,10 mm und Leiterplattenstärke 1,6 mm