

**FEATURES AND SPECIFICATIONS**

**Features and Benefits**

- 1-piece housing assures precise positioning of cable
- Molded-in polarization
- 4 points of contact with ribbon cable
- Preloaded contacts
- Accepts 28 or 26 AWG (7 strand) ribbon cable
- Tape option for high-speed termination, contact Molex for part numbers

**Reference Information**

Product Specification: PS-99020-0011  
 Packaging: Bag (tape optional)  
 Tooling Information: See end of section  
 UL File No.: E29179  
 CSA File No.: LR19980-181  
 Mates With: 90325, 90715, 90779, 90800 and 90814  
 Use Molex Cable: 6800, 8863 and 40158  
 Designed In: Millimeters

**Electrical**

Voltage: 250V  
 Current: 1.2A  
 Contact Resistance: 15mΩ max.  
 Dielectric Withstanding Voltage: 750V rms  
 Insulation Resistance: 1000 MΩ min.

**Mechanical**

Mating Force: 1.7N Tin/Lead and 1.1N Gold  
 Unmating Force: 0.25N Tin/Lead and 0.25N Gold  
 Durability: 30 cycles max. Tin/Lead and 100 cycles max. Gold (using extraction tool)

**Physical**

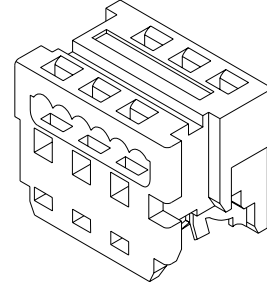
Housing: White polyester, UL 94V-0  
 Contact: Phosphor Bronze Alloy  
 Plating: See Table  
 Operating Temperature: -40 to +105°C  
 Cable Accommodation: 26 and 28 AWG stranded



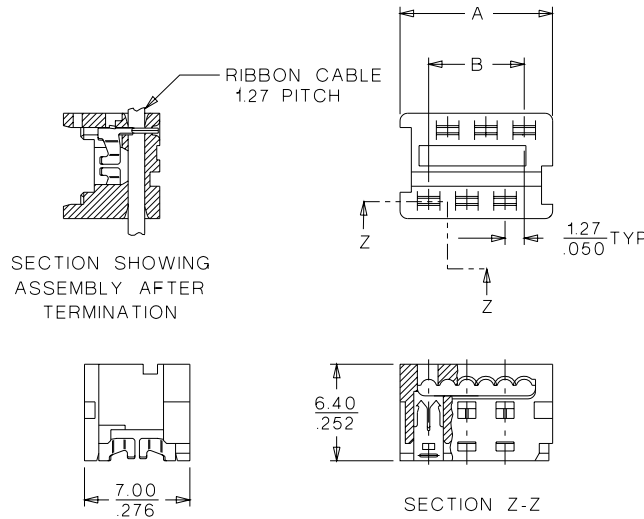
**1.27mm (.050") Pitch  
 Picoflex™ PF-50  
 Connector**

**90327**

**Low Profile, IDT**



**CATALOG DRAWING (FOR REFERENCE ONLY)**



**ORDERING INFORMATION AND DIMENSIONS**

Circuits	Order No.		Dimension	
	Plating 1	Plating 2	A	B
4	90327-0304	90327-3304	7.59 (.299)	3.81 (.150)
6	90327-0306	90327-3306	10.13 (.399)	6.35 (.250)
8	90327-0308	90327-3308	12.67 (.499)	8.89 (.350)
10	90327-0310	90327-3310	15.21 (.599)	11.43 (.450)
12	90327-0312	90327-3312	17.75 (.699)	13.97 (.550)
14	90327-0314	90327-3314	20.29 (.799)	16.51 (.650)
16	90327-0316	90327-3316	22.83 (.899)	19.05 (.750)
18	90327-0318	90327-3318	25.37 (.999)	21.59 (.850)
20	90327-0320	90327-3320	27.91 (1.099)	24.13 (.950)
26	90327-0326	90327-3326	35.53 (1.399)	31.75 (1.250)

Plating 1: 3-6µm (120-240µ") Tin/Lead  
 Plating 2: 0.76µm (30µ") Select Gold